

Compare



Analyse
your
collection

Plan



Quantify

WorldCat Collection Analysis

Resource evaluation, comparison and planning



OCLC[™]

The world's libraries.
Connected.

The WorldCat Collection Analysis™ service

gives you the power to view your entire collection and how it's used at a glance. It illustrates your collection, and compares it to other institutions' collections (both peer institutions and aspirational institutions), and the full WorldCat® database. The derived data can inform your decisions for acquisitions, digitisation projects and weeding, and can assist in program assessment and accreditation. WorldCat Collection Analysis builds on the investment you've already made by using your institution's holdings in WorldCat. It lets you see exactly what makes your institution's collections unique—with the power of 9,000 fellow member libraries, archives, museums and historical societies throughout the world to support your findings.

Information professionals are always looking to make the most of materials acquisitions budgets. Yet acquiring the information needed to make informed purchasing decisions—knowing what you already have and what you need across subject areas, formats and languages—as well as how those titles are being circulated—can be a complicated and labor-intensive undertaking.

WorldCat Collection Analysis makes quick work of this task by leveraging existing information about your holdings in the WorldCat database. You can review your own collection, compare it against peer institutions, or compare it to all the holdings in WorldCat to determine strengths, gaps and collection overlaps. You can identify items unique to your institution and evaluate how your collection is being used by examining ILL and circulation usage statistics. Available through the OCLC FirstSearch® service, WorldCat Collection Analysis is a Web-based tool that allows you to request and review reports as often as needed. There's no software to install, and reports are ready to use.

The WorldCat Collection Analysis service is immediately available to all institutions that maintain holdings in WorldCat. You can analyse any collection regardless of the type of materials, library or institution, or integrated library system used. An affordable, annual subscription and unlimited report usage give you valuable insight at a predictable price.



View and assess

Whether you're an academic, public or special library, museum, archive or historical society, or part of a consortium, you can now examine your holdings and assess your collection.

WorldCat Collection Analysis is easy to use, and offers you the flexibility to view your collection in multiple ways. Choose from many parameters, including subject, titles and title counts, language, publication date (e.g., pre-1500 to current year), format (e.g., books, electronic, sound recordings) and audience level (e.g., adult, juvenile).

Even if you use multiple classification schemes—such as Dewey® (DDC®), Library of Congress (LCC) or National Library of Medicine (NLM)—you can analyse your collection as a single entity. You'll save significant time having one complete view of the collection.

Compare and contrast

See how your collection stacks up against the billion-plus holdings in WorldCat. Help decide what should be digitised, weeded or stored remotely. Only WorldCat Collection Analysis lets you evaluate your collection against all the holdings in WorldCat, or up to ten peer institutions; or lets you create one-to-one comparisons (with the other institution's permission), regardless of whether they also use the service.

Individual subscribers also gain access to valuable ILL data from the WorldCat Resource Sharing™ service and the ability to create a Circulation Analysis at no additional charge. This data helps you assess how your collection is being used (or not used) to further inform collection development and management decisions such as capital investment initiatives and grant proposals.

WorldCat Collection Analysis helps group subscribers, too. Until now, there has been no simple way to compare the collections of group member institutions against each other. Now groups can evaluate their members' holdings by subject area.

Predefined groups and authoritative list comparisons, such as *Books for College Libraries*, *Doody's Core Medical Titles*, *Outstanding Academic Titles*, *Library Journal*, *School Library Journal*, *Publisher's Weekly* and *Booklist*, offer even more ways to assess your collections.

Regardless of your institution's type, comparison data can better inform your collection development and management activities and provide compelling evidence for funding justification.

“ We’ve been able to establish benchmarks to build on...and [WorldCat Collection Analysis] has been extremely useful for developing budgets because it’s an independent, objective source of data. ”

Erlene Dudley
Library Director
William Woods University Library

Produce detailed reports

Analysis reports are easily generated. Uncomplicated, professional spreadsheets and graphs make it simple to share information with colleagues and administrators. You can also export data to Microsoft Excel or similar programs.

Address your library’s specific needs

Every collection is unique, and so are your collection management needs. Regardless of your institution type or what your collection goals are, the WorldCat Collection Analysis service helps you generate the information you need.

Getting started

When you purchase a new subscription, OCLC offers your institution a one-time retrospective or reclamation batchload at no additional charge. Adding holdings to WorldCat or bringing them up-to-date enables your library or group to more accurately analyse its entire collection.

Electronic books

Expanding your ‘e’ collection? Now you can compare your collection to all of the eBook holdings in WorldCat. This data can help you determine what’s available to complete or complement your eBook and eContent offerings.

Academic libraries

Compare your collection with peer institutions, effectively support accreditation requirements, and build collections for new areas of study by replicating established institutions’ collections. Multiple predefined, peer collection comparisons are available, such as the Google 5, the top-20 Association of Research Libraries, the top 10 law schools, top executive MBA programs and many more.

Public libraries

See your entire collection. Analyse a collection based on language to support the changing, diverse needs of users in your community. Create a Circulation Analysis to determine usage patterns in your collection.

Groups

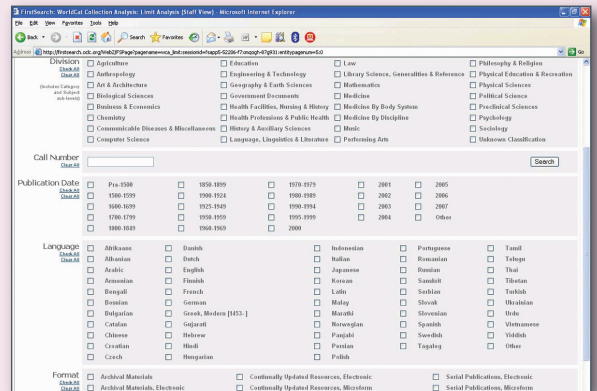
Analyse all members’ collections for more effective, collaborative collection development.

Museums, archives and historical societies

Compare your collection with thousands of other WorldCat institutions to identify those items your institution uniquely holds. Produce reports that quantify and support funding initiatives.

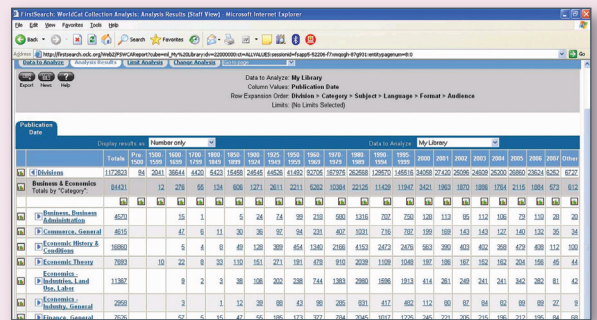
A closer look

WorldCat Collection Analysis is accessed through FirstSearch and doesn’t require extensive training.



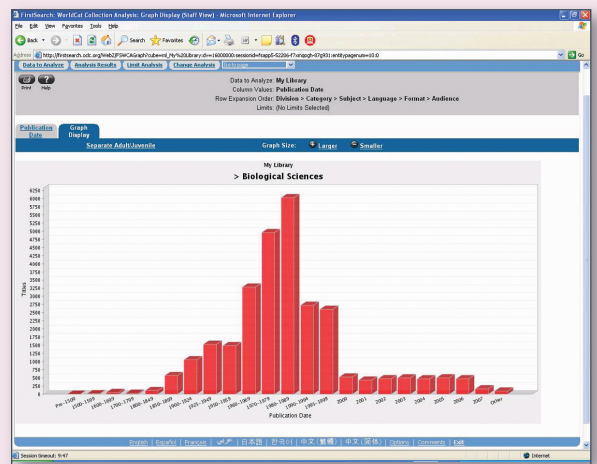
1. Set analysis parameters

Run a broad analysis or delve into specifics with the use of limiting parameters that include subject, date of publication, language, format and audience.



2. Set analysis order

You can quickly drill down to more granular areas of your collection.



3. View your results

You can view results as a table or graph, and easily export them.

Benefits

- **Identify your unique holdings**—Compare your collection against all the holdings in WorldCat
- **Compare with peer institutions**—Easily evaluate your collection against other WorldCat institutions of your choice
- **Assess your collection**—Identify overlaps and gaps
- **Support decisions for both print and electronic acquisitions**
- **Assess collection usage**—Determine how your collection is being used by examining circulation and ILL statistics
- **Leverage your investment in WorldCat**—Your holdings in WorldCat provide the necessary analysis data
- **Demonstrate fiscal responsibility**—Analysis results provide justification for collections budgets or requests for additional funding
- **Support accreditation**—Academic libraries can create reports to help meet accreditation requirements
- **Contribute to consortia activities**—Create cooperative collection development lists

Features

- Complimentary batchload upon request to get your institution's holdings up-to-date before running your analysis
- Reports include the ability to generate tables or graphs

- Capability to export to Microsoft Excel and similar programs
- Handles an unlimited number of requests for peer institution comparisons
- Browser interface that's easy to use from within FirstSearch
- ILL data from WorldCat Resource Sharing that helps individual institutions analyse borrowing and lending over time to reveal acquisition priorities and collection use

Requirements

- Your institution's holdings in WorldCat—please contact your OCLC regional service provider for more information on how to set or update all of your holdings in WorldCat
- Current generation Web browser (Netscape Navigator 7 or higher or Microsoft Internet Explorer 5.0 or higher)

How to Get Started

It's easy to begin using the service right away when you meet the requirements above.

1. Purchase a subscription to the service.
2. Your analysis will be available within two weeks of processing your order.
3. You can begin using the analysis right away.

To learn more

For more information on WorldCat Collection Analysis, and to view an online demonstration of the service, visit the OCLC Web site at www.oclc.org/collectionanalysis/

To discuss pricing and place an order contact your local OCLC office or email: uk@oclc.org

To purchase a subscription online Visit the OCLC Online Service Center at: www.oclc.org/servicecenter/

An important return on your OCLC investment

When you appraise your resources with WorldCat Collection Analysis, you're using existing WorldCat data—bibliographic and/or ownership information you've contributed through other OCLC services. Effort you've already expended comes back to you in the form of highly useful analysis. It enhances the value of your investment and of WorldCat, the largest and most comprehensive database of its kind. Learn more about WorldCat and watch new records enter the database live at www.oclc.org/worldcat/.



OCLC helps libraries in more than 100 countries provide users with bibliographic, abstract and full-text information when and where they need it. OCLC and its member libraries cooperatively produce and maintain WorldCat, the world's most comprehensive bibliographic database. Please contact us to learn more about OCLC in your part of the world.

Australia

Suite 5, 131 Paisley Street
Footscray, Victoria 3011
Australia
T +61-3-9362 8500
F +61-3-9362 8501
E australia@oclc.org

Canada

701 Salaberry Street, Suite 200
Chambly, QC J3L 1R2 Canada
T +1-450-658-6583
888-658-6583
F +1-450-658-6231
E canada@oclc.org

China

Room 1207, 12th Floor
China Electronics Plaza,
Building B
No. 3, Dan Ling Road
Hai Dian District, Beijing 100080
China
T +86-10-8260-7538
F +86-10-8260-7539
E china@oclc.org

France

14, Place des Victoires
92600 Asnières sur Seine, France
T +33-1-55-02-14-80
F +33-1-47-93-50-13
E france@oclc.org

Germany

Grünwalder Weg 28g
82041 Oberhaching,
Deutschland
T +49-89-613-08-300
F +49-89-613-08-399
E deutschland@oclc.org

Mexico

Av. Amores 707 Desp. 401
Col. Del Valle
México 03100, D.F.
T +52-55-5687-3307
F +52-55-5523-9212
E mexico@oclc.org

Netherlands

Schipholweg 99, 2316 XA
P.O. Box 876, 2300 AW
Leiden, Nederland
T +31-71-524-65-00
F +31-71-522-31-19
E nederland@oclc.org

Switzerland

St. Jakobs-Strasse 96
4052 Basel, Schweiz
T +41-61-378-80-70
F +41-61-378-80-79
E schweiz@oclc.org

United Kingdom & Ireland

7th Floor, Tricorn House
51-53 Hagley Road, Edgbaston
Birmingham B16 8TP, UK
T +44-121-456-46-56
F +44-121-456-46-80
E uk@oclc.org

United States

6565 Kilgour Place
Dublin, OH 43017-3395 USA
T +1-614-764-6000
800-848-5878
(US + Canada only)
F +1-614-764-6096
E usa@oclc.org

The following OCLC product, service and business names are trademarks or service marks of OCLC Online Computer Library Center, Inc.: DDC, Dewey, FirstSearch, OCLC, WorldCat, WorldCat Collection Analysis, WorldCat Resource Sharing and "The world's libraries. Connected." The WorldCat symbol and OCLC symbol are service marks of OCLC. Third-party product and service names are trademarks or service marks of their respective owners. OCLC grants permission to photocopy this publication as needed.