

25 July 2017

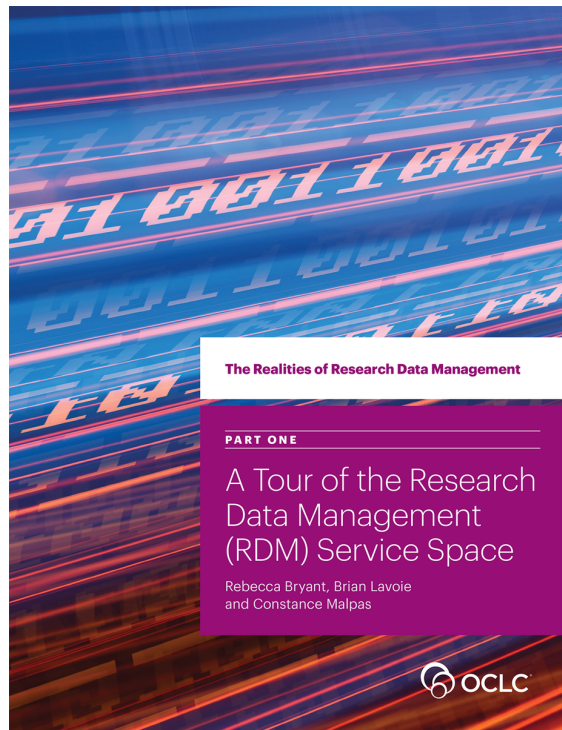
# Policy Realities in Research Data Management

**OCLC Research Library Partnership**

Works in Progress Webinar

# The Realities of Research Data Management

- Four-part series exploring how research universities are addressing the challenge of managing research data throughout the research lifecycle
- Examines RDM case studies at:
  - University of Edinburgh (UK)
  - University of Illinois at Urbana-Champaign (US)
  - Monash University (Australia)
  - Wageningen University & Research (the Netherlands)
- [oclc.org/rdm](https://oclc.org/rdm)



# Research Data Management Service Categories

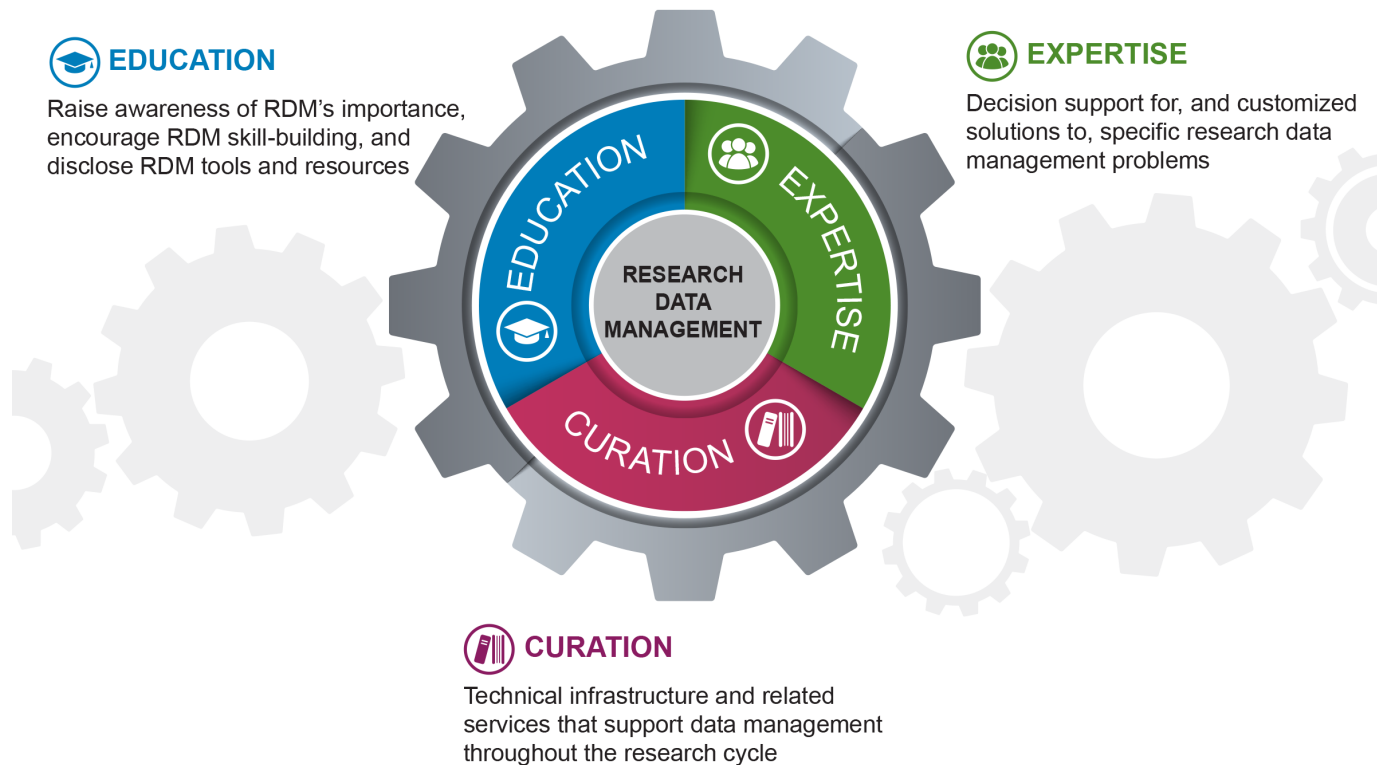


Figure 1. RDM Service Categories. From *A Tour of the Research Data Management (RDM) Service Space*. The Realities of Research Data Management, Part 1. (CC BY 4.0)



## Heidi Imker

Director, Research Data Service  
University of Illinois at Urbana-Champaign

---



## Jacquelyn Ringersma

Head of Digital Production Centre  
Wageningen University & Research

---



# Realities of Research Data Repository Policies

OCLC Webinar  
July 25, 2017

Heidi Imker, PhD

Director, Research Data Service

Associate Professor, University Library

University of Illinois at Urbana-Champaign

# Illinois Data Bank

---

**The Illinois Data Bank is a self-serve publishing platform that centralizes, preserves, and provides persistent and reliable access to Illinois research.**

- Custom web application that interacts with the preservation system that supports all digital content at our library
- A sibling repository to our document repository, IDEALS
- Overall development is described in:
  - Fallaw, Colleen, Elise Dunham, Elizabeth Wickes, Dena Strong, Ayla Stein, Qian Zhang, Kyle Rimkus, Bill Ingram, and Heidi J. Imker. 2016. **“Overly Honest Data Repository Development.”** *The Code4Lib Journal*, no. 34 (October).  
<http://journal.code4lib.org/articles/11980>

# Illinois Data Bank Policies

---

**Live Policies:** <https://databank.illinois.edu/policies>

Policy Title	URL
Access and Use Policy	<a href="http://hdl.handle.net/2142/91041">http://hdl.handle.net/2142/91041</a>
Accession Policy	<a href="http://hdl.handle.net/2142/91042">http://hdl.handle.net/2142/91042</a>
Deposit Agreement	<a href="http://hdl.handle.net/2142/91043">http://hdl.handle.net/2142/91043</a>
Preservation Policy	<a href="http://hdl.handle.net/2142/91044">http://hdl.handle.net/2142/91044</a>
Preservation Review, Revision, Retention, Deaccession, and Withdrawal Procedure	<a href="http://hdl.handle.net/2142/91045">http://hdl.handle.net/2142/91045</a>
Withdrawal Guidelines	<a href="http://hdl.handle.net/2142/91616">http://hdl.handle.net/2142/91616</a>
Preservation Review Guidelines	<a href="http://hdl.handle.net/2142/91617">http://hdl.handle.net/2142/91617</a>

# Policies Shmolices

---

*Me: Why can't I just make all the decisions?*

# Policies Shmolices

---

*Me: Why can't I just make all the decisions?*

*Elise: Because you're not a dictator.*

# Policies Shmolices

---

*But also ...*

- *Consistency as staff turns over*
- *De-personalization*
- *Clarity and transparency*

# Proposed Timeline

---

## **Drafted Milestones**

### **August 15 2015**

- Minimal prototype

### **September 15 2015**

- First round user testing (alpha 1)
- Policy pre-review w/ legal

### **November 15 2015**

- Second round user testing begins (alpha 2)
- Policy review w/ campus group

### **March 15 2016**

- Third round user testing begins (beta)
- Policy finalized with legal

### **May 15 2016**

- Illinois Data Base ready for campus use

# Proposed Timeline

---

## Drafted Milestones

**August 15 2015**

- Minimal prototype

**September 15 2015**

- First round user testing (alpha 1)
- **Policy pre-review w/ legal**

**November 15 2015**

- Second round user testing begins (alpha 2)
- **Policy review w/ campus group**

**March 15 2016**

- Third round user testing begins (beta)
- **Policy finalized with legal**

**May 15 2016**

- Illinois Data Base ready for campus use

***Milestones for policy development literally coincided with milestones for technical development of the Illinois Data Bank.***



# Process

---

- *Created draft policies largely based on existing policies*

# Process

---

- *Created draft policies largely based on existing policies*
- *Identified campus representatives for a Illinois Data Bank Policy Review Group (list vetted by Library Administration and OVCR)*

# Composition of Review Group

---

Role	Campus Unit
Senior IT Security Engineer	Technology Services
Export Compliance Officer	Office of the Vice Chancellor for Research
Research Ethics Officer	Office of the Vice Chancellor for Research
Deputy CIO of Research IT and research leader at National Center for Supercomputing Applications	Technology Services; National Center for Supercomputing Applications
Director, Institutional Review Board	Office for the Protection of Research Subjects
Associate Vice Chancellor for Research and Director of Sponsored Programs	Office of the Vice Chancellor for Research; Office of Sponsored Programs
Director, Records and Information Management Services	Records and Information Management Services
Senior Associate University Counsel	University Counsel
Senior Technology Manager (1)	Office of Technology Management
Senior Technology Manager (2)	Office of Technology Management
Assistant Dean for the Graduate College	Graduate College
Associate University Librarian for Research	University Library
Manager, Scholarly Communication and Repository Services	University Library
Engineering, Physics and Astronomy Librarian	University Library

# Process

---

- *Created draft policies largely based on existing policies*
- *Identified campus representatives for a Illinois Data Bank Policy Review Group (list vetted by Library Administration and OVCR)*
- *Gave contact in campus legal a preview of the draft policies for pre-feedback*

# Process

---

- *Created draft policies largely based on existing policies*
- *Identified campus representatives for a Illinois Data Bank Policy Review Group (list vetted by Library Administration and OVCR)*
- *Gave contact in campus legal a preview of the draft policies for pre-feedback*
- *Assembled the Policy Review Group for an “orientation meeting”*

# Process

---

- *Created draft policies largely based on existing policies*
- *Identified campus representatives for a Illinois Data Bank Policy Review Group (list vetted by Library Administration and OVCR)*
- *Gave contact in campus legal a preview of the draft policies for pre-feedback*
- *Assembled the Policy Review Group for an “orientation meeting”*
- *Gave members 1 month to review policies and provide feedback **prior to subsequent meeting***

# Process

---

- *Created draft policies largely based on existing policies*
- *Identified campus representatives for a Illinois Data Bank Policy Review Group (list vetted by Library Administration and OVCR)*
- *Gave contact in campus legal a preview of the draft policies for pre-feedback*
- *Assembled the Policy Review Group for an “orientation meeting”*
- *Gave members 1 month to review policies and provide feedback **prior to subsequent meeting***
- *Incorporated any minor feedback into revised drafts and selected only major feedback items for group discussion at meeting*

# Process

---

- *Created draft policies largely based on existing policies*
- *Identified campus representatives for a Illinois Data Bank Policy Review Group (list vetted by Library Administration and OVCR)*
- *Gave contact in campus legal a preview of the draft policies for pre-feedback*
- *Assembled the Policy Review Group for an “orientation meeting”*
- *Gave members 1 month to review policies and provide feedback **prior to subsequent meeting***
- *Incorporated any minor feedback into revised drafts and selected only major feedback items for group discussion at meeting*
- ***Repeated review/meet process 3 times total***



# Process

---

- *Created draft policies largely based on existing policies*
- *Identified campus representatives for a Illinois Data Bank Policy Review Group (list vetted by Library Administration and OVCR)*
- *Gave contact in campus legal a preview of the draft policies for pre-feedback*
- *Assembled the Policy Review Group for an “orientation meeting”*
- *Gave members 1 month to review policies and provide feedback **prior to subsequent meeting***
- *Incorporated any minor feedback into revised drafts and selected only major feedback items for group discussion at meeting*
- *Repeated review/meet process 3 times total*
- ***Presented finalized policies to Library Administration and OVCR***

# Actual Timeline

---

## Drafted Milestones

August 15 2015

- Minimal prototype

September 15 2015

- First round user testing (alpha 1)
- **Policy pre-review w/ legal**

November 15 2015

- Second round user testing begins (alpha 2)
- **Policy review w/ campus group**

March 15 2016

- Third round user testing begins (beta)
- **Policy finalized with legal**

May 15 2016

- Illinois Data Base ready for campus use

## Actual Milestones

August 15 2015

- Minimal prototype

October 09 2015

- **Policy pre-review w/ legal**

January 13 2016

- **1<sup>st</sup> Policy Review w/ campus group**

February 19 2016

- **2<sup>nd</sup> Policy Review w/ campus group**

April 01 2016

- **3<sup>rd</sup> Policy Review w/ campus group**

May 03 2016

- **Policies vetted by OVCR and Library Administration**

May 15 2016

- Illinois Data Base ready for campus use

# Why did this process work?

---

- We gave ourselves (and others) a fairly reasonable amount of time
- We started with solid drafts
- It was supported by the OVCR and Library Administration
- We made it clear that we didn't want to waste peoples' time
- We made it clear that their input was necessary and important
- We backed that up by communicating well and being very organized

# Have the policies been useful?

---

- Unexpectedly huge benefit to developing policies in concert with development of the repository itself
- Clarified positions and processes *for ourselves*
- Engagement opportunity with members of the Review Group
- Uses so far:
  - Avoiding emotional decision-making
  - Showing our dedication, professionalism, and thoughtfulness
  - Setting an example of transparency

# What's to come?

---

- Policy review process
- Tweaks
- Testing

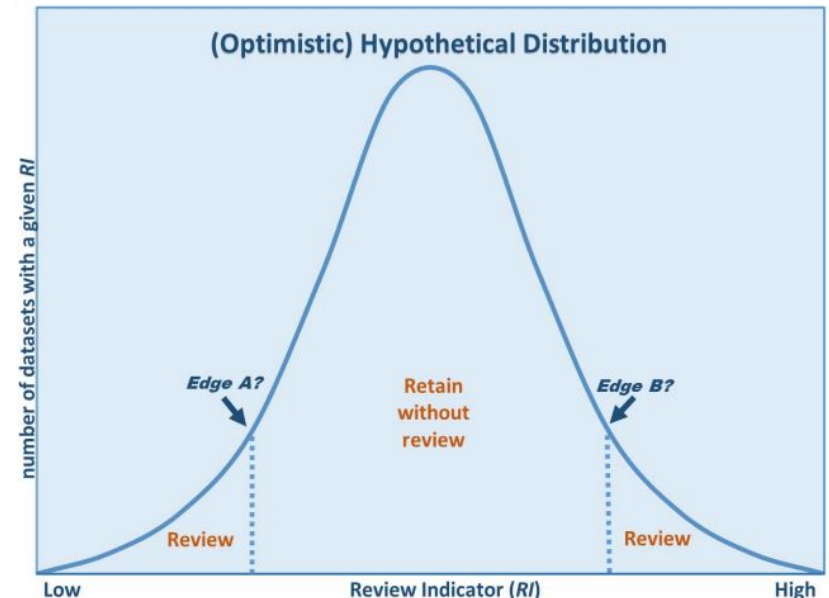
# To-Be Tested Review Strategy

Calculate a “**Review Indicator**” (RI) to help determine which data needs review.

A formula under consideration is

$$RI = \frac{\text{Downloads} * \text{Relationships} * \text{Format}}{\text{Bytes}}$$

where format is represented with a scale that increases with a format’s preservation “difficulty.”



## Should We Keep Everything Forever? Determining Long-Term Value of Research Data

B Anderson, S Braxton, E Dunham, H Imker, K Rimkus

iPres 2016 Poster <http://hdl.handle.net/2142/91659>

# Thank you for the opportunity and interest!

Heidi Imker

@imkerinfo

[imker@illinois.edu](mailto:imker@illinois.edu)

researchdataservice.illinois.edu  
databank.illinois.edu

- *Elise Dunham - RDS Curator*
- *Beth Namachchivaya - AUL for Research*
- *Steve Anderson - University Counsel*
- *Sarah Shreeves - IDEALS Coordinator*

We're hiring!    [go.illinois.edu/joinRDS](https://go.illinois.edu/joinRDS)

# RDM policy & practice

## Wageningen University & Research

OCLC webinar|July 2017|Jacqueline Ringersma|WUR Library





# Wageningen University & Research



# Wageningen University & Research



# Wageningen University & Research

University (food, environment, plant, animal, social)

- ~ 10.000 students
- ~ 2.500 employees
- Yearly ~ 250 PhD student graduations

Research (food, environment, plant, animal, social)

- ~ 2.500 employees
- National research institutes



# National context: RDM



Jacquelyn Ringersma  
(UKB Research Data)



Jasper van Dijk (TU  
Delft)



Floor Frederiks  
(Universiteit Leiden)



Patrick Hodriks  
(Universiteit Twente)



Rob Hoek (Dutch  
Technology for  
LifeSciences)



Henk van den Hoogen  
(Maastricht University)



Rob Gommans (Radboud  
University)



Rosemary van Kempen  
(NWO)



Ton Smeede (Universiteit  
Utrecht)



Drouse Zeldervus  
(Meertens Instituut)



Marc Broekhoven (TU  
Eindhoven)



Irene Haslinger (TU Delft) -  
agendaid

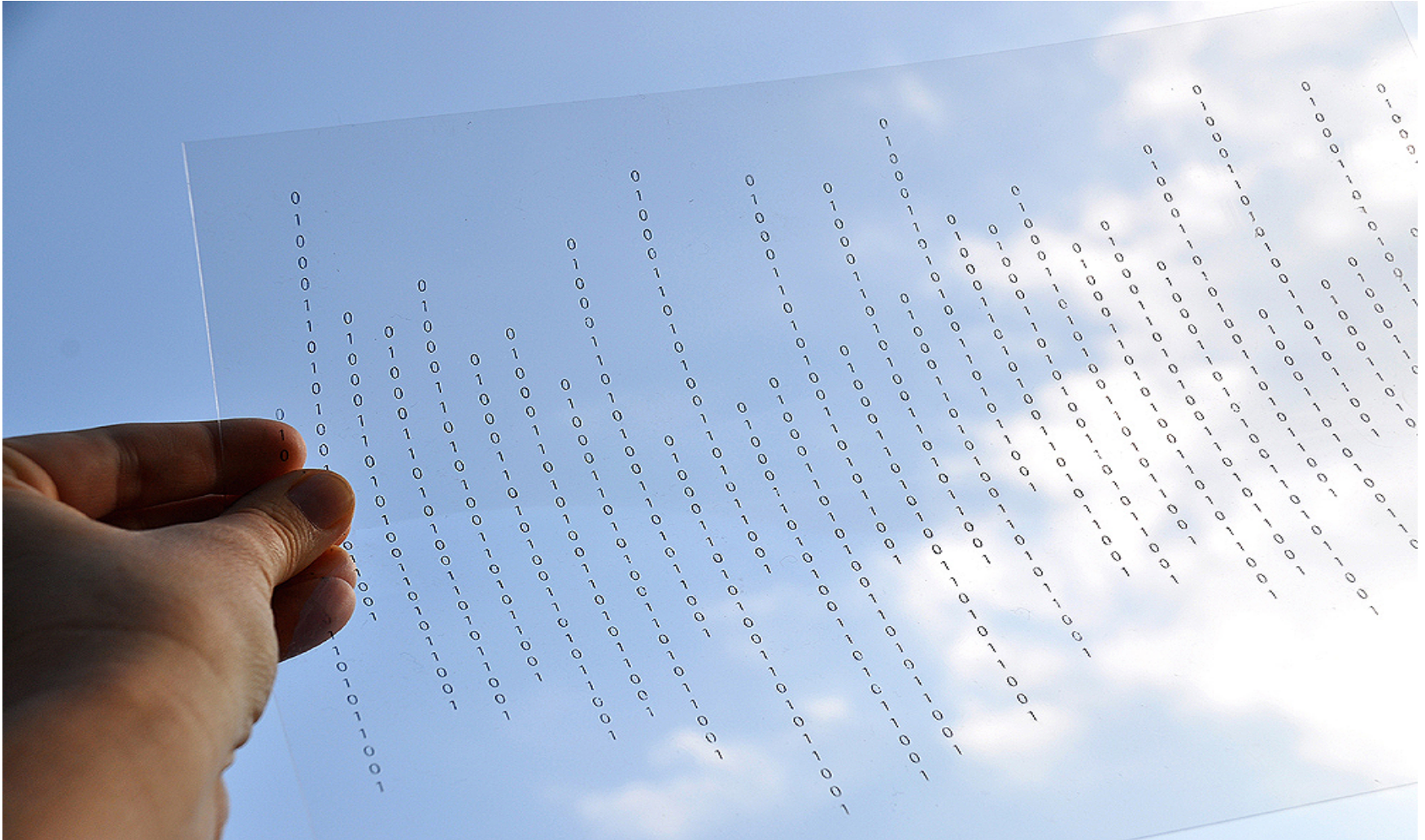


Ex-officio: Ingelborg  
Verheul (SURF.nl, SURF.nl,  
LCRDM)





# RDM policy history





# RDM policy history: Engage with researchers



# RDM policy history

- 2010: first discussion on data between researchers, graduate schools and library
- 2014: first RDM policy: all PhD students and University chairs must have a Data Management Plan



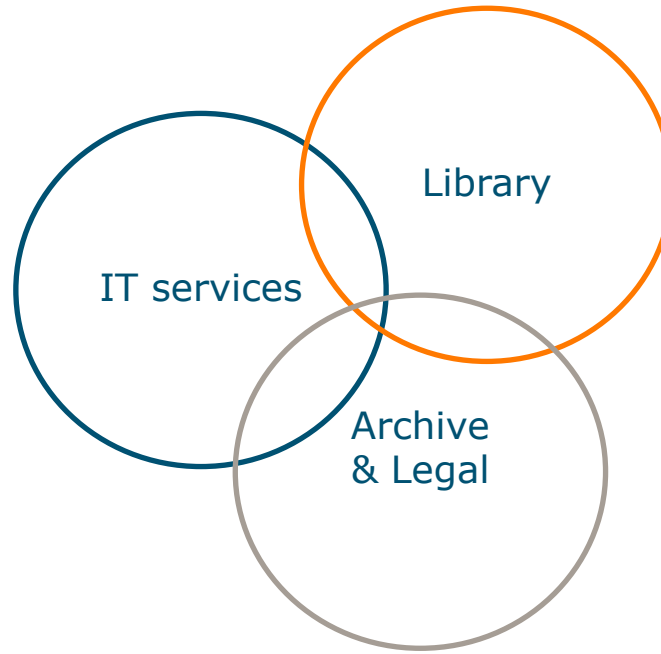
# RDM policy history

- 2010: first discussion on data between researchers, graduate schools and library
- 2014: first RDM policy: all PhD students and University chairs must have a Data Management Plan
- 2015: RDM services by Library, IT, legal and archive





# Developing RDM services



Before

During

After

Research project time line

# Developing RDM services

## Data archiving at DANS:

- Trusted archive, PID, sustainable formats, access right help services

## DMP training:

- We developed our Wageningen DMP training with the Graduate Schools. The training was copied by other Universities in the Netherlands.

## Software archiving:

- On specific researcher request we created a software archiving environment on GitHub, which is now also used by non-Wageningen researchers

# Registration of datasets

Why:

One view for all Wageningen datasets

No institutional data archive; data are archived in multiple locations

Ready for Evaluation protocols

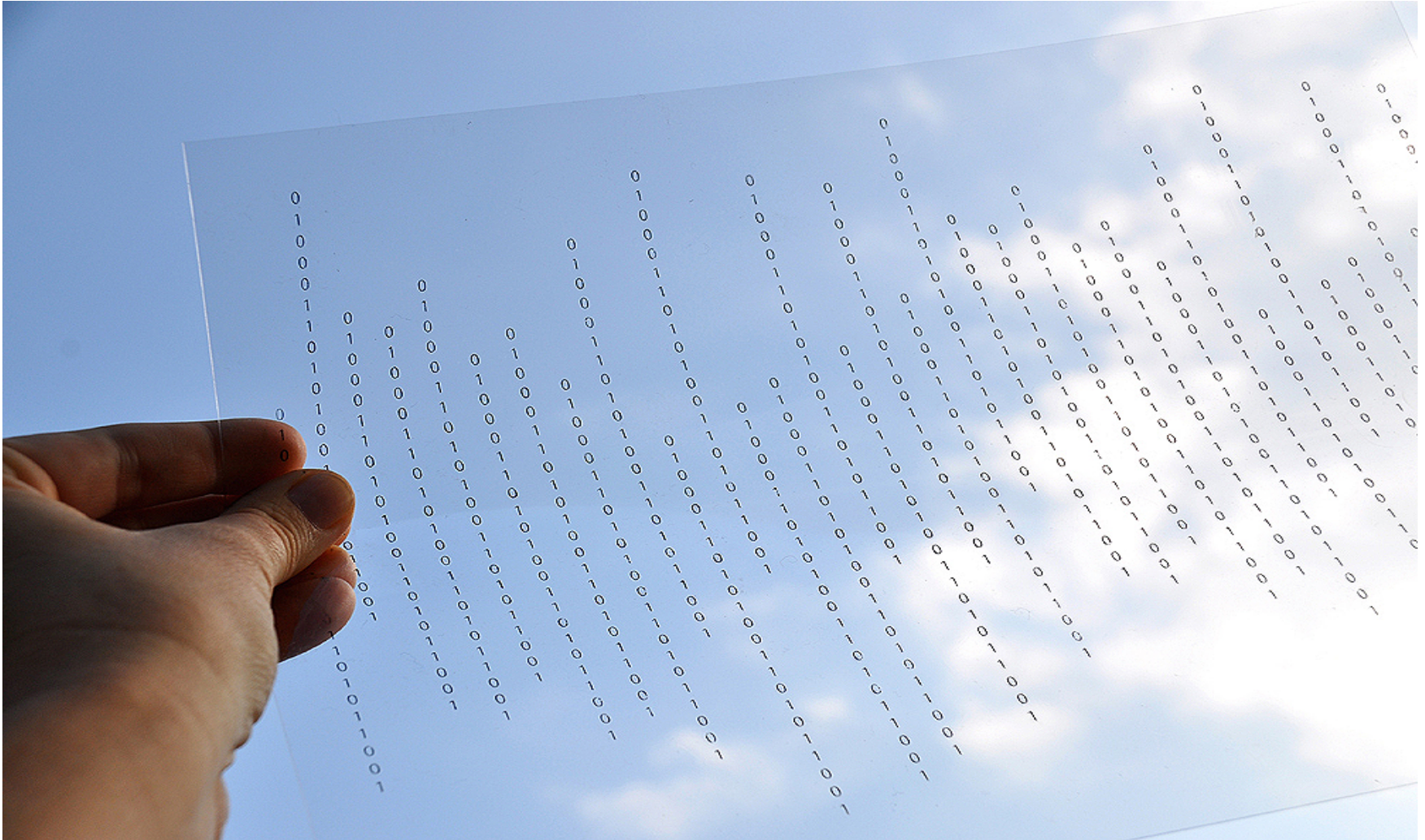
What:

Dataset has a PID

Publication has a PID

We combine the two in one new record: the enriched publication type

# Recent developments



# RDM policy history

- 2010: first discussion on data between researchers, graduate schools and library
- 2014: first RDM policy: all PhD students and University chairs must have a Data Management Plan
- 2015: RDM services by Library, IT, legal and archive
- 2016: Evaluation of RDM behaviour
- 2017: Additional RDM policy





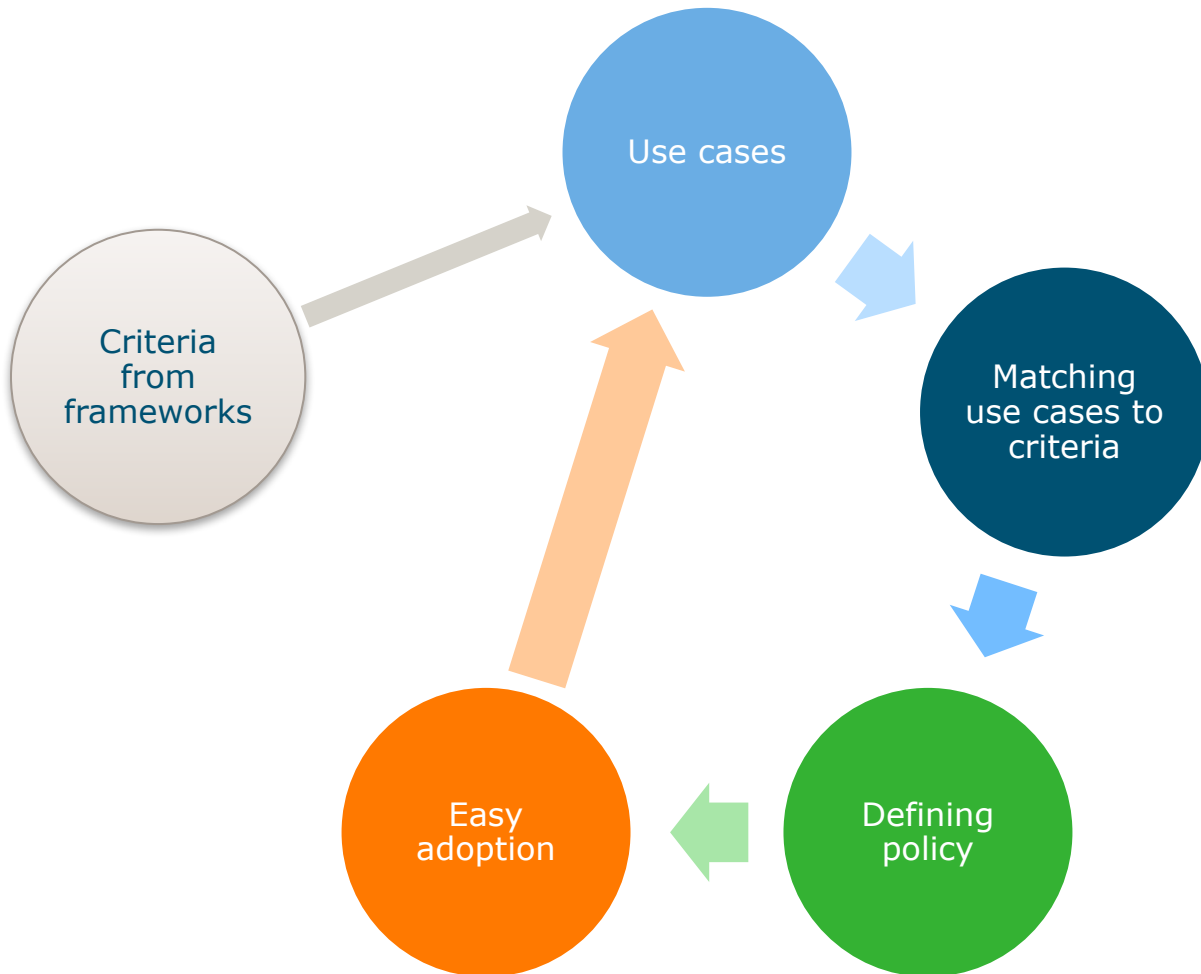
# Additional RDM policy

Dean of Science asked RDM support services

Make a proposal for a new, more advanced policy for Data Storage, Data Archiving and Data Registration

- National frameworks
- Diversity in the organisation
- Best practices





# Brief on the new RDM policy

All Wageningen University & Research researchers should:

*During research:*

Store their data on WUR servers, or on servers approved by IT (RDM services)

*After research:*

Archive all data underlying a publication in a trusted archive, which meets FAIR criteria

Register their data in the institutional repository



# Advantages of engaging researchers

It created RDM awareness!

Build on what is already done

- It avoids building or buying new infrastructure

- It meets researchers workflows, and practices

- It facilitates adoption

Less rules, better services, happy clients/researchers



*I share my tree research data  
online at WUR Library*

Wageningen University & Research - Library  
Accelerate your research

[www.wur.eu/library](http://www.wur.eu/library)



WAGENINGEN  
UNIVERSITY & RESEARCH



WAGENINGEN  
UNIVERSITY & RESEARCH