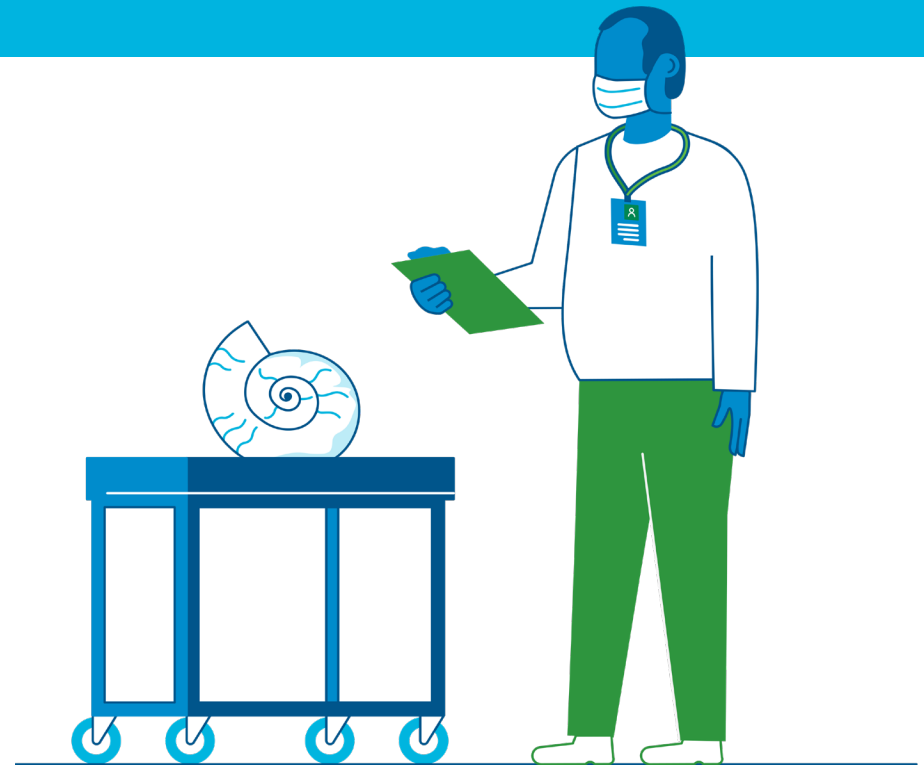


# REALM for Museums

**REopening Archives, Libraries, and Museums (REALM)** is a research partnership between OCLC, the Institute of Museum and Library Services, and Battelle. It is conducting research on how long the COVID-19 virus survives on materials that are prevalent in libraries, archives, and museums.




[oclc.org/realm-project](https://oclc.org/realm-project)

This project was made possible in part by the Institute of Museum and Library Services, project number ODIS-246644-ODIS-20.

## REALM provides science-based information

REALM is not issuing recommendations or guidelines. We're working to create resources that help inform local decision-making. Each institution must consider local health conditions and their own needs and practices when developing COVID-19 protocols.


### The “known unknowns”



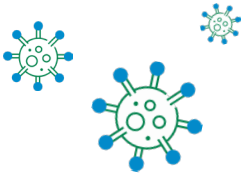
Knowledge about COVID-19 is still emerging. Keep the following in mind when interpreting and applying REALM data.



**1** **Unknown:** How much virus an infected person will leave on an object



**2** **Unknown:** How much virus someone can pick up from an object



**3** **Unknown:** How much virus is needed to cause infection





## How testing works

Infectious virus is applied to materials and then measured at selected time points to capture the drop in total virus. Some materials still showed trace amounts of viable virus at the final testing timepoint.

REALM is testing a wide variety of library, archive, and museum materials. Many overlap across institution type. Because museums have a wide range of practice, items are presented here with their material name first, followed by a specific item name if applicable.

Visit [oc.lib.uci.edu/realm-project](https://oc.lib.uci.edu/realm-project) for project plans, test results, and new resources as they become available.

## How long the virus survives on commonly used archive, library, and museum materials

-  Item tested in a **stacked** configuration
-  Item tested in an **unstacked** configuration
-  Item showed **trace amount** of virus after testing
-  Item was **above LOQ\*\*** after testing

\*For test results on additional materials and more information on testing methods, visit [oc.lc/realm-project](https://oc.lc/realm-project).

\*\* The limit of quantitation. Below this point (26.2 virus cells), researchers can determine only whether the virus is present or absent, not the number of virus particles.

