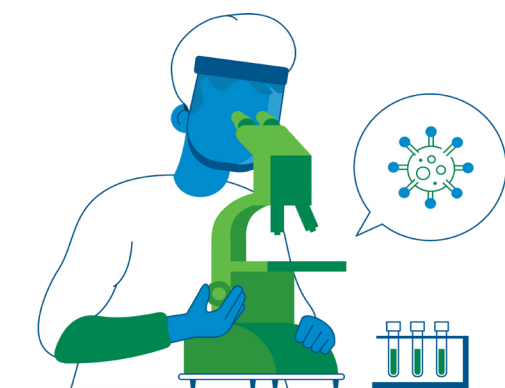


Commonly used words and terms

Word / Term	Definition
Ambient laboratory conditions	The temperature, humidity, and air pressure in the Battelle lab during REALM testing (between 68–75 degrees Fahrenheit and 30–50% relative humidity).
Assay	An investigative procedure used to determine the content or components of a material being studied.
Attenuation	The weakening or deactivation of virus particles so they are no longer infectious.
Battelle	The nonprofit contract research institute that is conducting REALM tests. Battelle has experience in biodefense and emerging infectious diseases.
Biosafety cabinet	An enclosed, ventilated laboratory used for safely working with materials contaminated with pathogens that require a defined biosafety level.
CDC	The Centers for Disease Control and Prevention.
Coupon(s)	During testing, materials are cut into several small rectangles, or “coupons,” to which the virus is then applied.
COVID-19	A disease caused by a new strain of coronavirus. ‘CO’ stands for corona, ‘VI’ for virus, ‘D’ for disease, and ‘19’ for 2019, the year the disease was identified.
CPE	Cytopathic effect (the structural changes in a host cell as the result of viral infection).
Cytotoxicity	When chemicals extracted from the material kills the cells used for measuring the virus. When these cells die, Battelle can’t identify what has been infected by the virus versus what has been killed by the cytotoxic chemical.
Fomites	Objects that can harbor the virus after being contaminated by an infected individual.
IMLS	The Institute of Museum and Library Services; REALM project funder consulting on project goals and activities, and convening the project Steering Committee and Working Groups.
Inoculation	To apply droplets of the virus stock solution with a known starting concentration.
LAM	The acronym for libraries, archives, and museums.
Literature review(s)	Relevant authoritative research synthesized for REALM.
LOD	The limit of detection. Below this point, the virus is absent from a material sample. This can also be described as “complete attenuation.”
Log scale	The logarithmic, or log, scale is a method often used to chart a very wide range of numbers. Using the base 10 log scale, 100,000 virus cells is expressed as 5, and 10,000 virus cells is expressed as 4.

Word / Term	Definition
LOQ	The limit of quantitation. The LOQ for this research is 26.2 cells, unless otherwise noted in the test results. Below this point researchers can determine only whether the virus is present or absent, not the number of virus particles.
Natural attenuation	When the virus weakens and becomes inactive on its own. This can also be described as environmental attenuation.
NEDCC	The Northeast Document Conservation Center.
OCLC	The organization charged with executing and managing REALM project deliverables.
PPE	Personal protective equipment, such as masks and gloves, used to protect a person from virus transmission.
QC	Quality control.
Quarantine	To impose isolation on.
REALM	REopening Archives, Libraries, and Museums; a research partnership between OCLC, the Institute of Museum and Library Services, and Battelle to conduct research on how long the COVID-19 virus survives on prevalent LAM materials.
Relative humidity conditions	Battelle is conducting REALM tests in the range of 30–50 percent relative humidity.
SARS-CoV-2 virus	Severe acute respiratory syndrome coronavirus 2; the virus that causes COVID-19.
Standard room temperature	The temperature, humidity, and air pressure in the Battelle lab during REALM testing (between 68–75 degrees Fahrenheit and 30–50% relative humidity).
Titer	The quantity of virus applied to REALM materials for testing.
Transmission, direct	Virus-containing droplets are expelled from an infected person and enter the system of an uninfected person.
Transmission, indirect	Objects can harbor the virus for an extended period after being contaminated by an infected person.



REopening Archives, Libraries, and Museums (REALM) is a research project conducted by OCLC, the Institute of Museum and Library Services, and Battelle to produce science-based information about how materials can be handled to mitigate COVID-19 exposure to staff and visitors of archives, libraries, and museums.

For resources, test results, and more information about the project, please visit oclc.org/realm-project.

This project was made possible in part by the Institute of Museum and Library Services, project number: ODIS-246644-ODIS-20.