



Find more time to  
connect with your

community.

**WorldShare Management Services** save you time and money by helping you easily manage your electronic, digital, and physical materials through a cloud-based library system. With WorldCat® as its foundation, WorldShare Management Services enable you to draw on the collaborative data and work of libraries worldwide for more efficient workflows.

# Do things differently so you have time to do different things.

Libraries strive to give their users access to the most advanced technology and tools possible to help them find and use the information resources they need, despite library budget and staffing constraints. Now, you have an opportunity to update your workflows with advanced, integrated solutions for your day-to-day tasks. The time and money you save can then be applied to meaningful engagement with the communities you serve to help **make breakthroughs possible.**

---

## **Give staff more time to take on new initiatives.**

WorldShare Management Services (WMS) integrate all your electronic and print resources workflows, including maintenance, within a single web-based interface. With access to WorldCat data, the WorldCat knowledge base, and OCLC's latest cataloging tools included, WMS simplifies and automates the management of your collections. WMS libraries report significant time savings. In fact, many now receive, invoice, and catalog new materials simultaneously. These streamlined workflows enable catalogers to spend more time on original cataloging for unique materials.

## **Help your users easily find and get what they need.**

WMS's single-search discovery interface, WorldCat Discovery, enables your library's users to find resources from your library, from your group, and from libraries worldwide. Your users can search all your collections at once, including e-books, databases, and streaming media. They can quickly access the information they need by linking to full text, getting the item in your library, or requesting items via consortial borrowing and WorldShare Interlibrary Loan. Further, they have comprehensive coverage and access through the vendor-neutral WorldCat central index that includes resources from more than 300 top publishers, including ProQuest, EBSCO, Gale, and Elsevier.

## **Reduce IT support and simplify library operations.**

WMS's cloud-based applications allow you to retire your old servers and to stop installing software updates on each library computer. Because of WMS's multi-tenant architecture, updates happen automatically, so you always have the latest version with the latest enhancements. Full release notes, free training resources, and support accompany each application's upgrade.

## **Future proof your library with an advanced system.**

A wide range of APIs, included with your WMS subscription, enables you to build applications to customize workflows. WMS also interoperates with many third-party solutions, such as financial management, learning management, and student record systems, so you can integrate your existing technologies into your new workflows. The progressive WorldShare Platform offers reliability and safeguards private data.

## **Inform decisions and prove the value of your library.**

WMS's integrated, custom reports allow you to review information about acquisitions, circulation, cataloging, and e-resources whenever you want to. Reports are easy to build and export and don't require SQL expertise. You can use this data to make the best choices for your library about how to spend your time and money. These reports also help funding organizations understand the impact of your library.



To learn more about  
WMS, visit [oclc.org/wms](https://oclc.org/wms).

# Streamline tasks for your whole staff.

## WMS is a complete, cloud-based library management system.

WMS offers all the applications needed to manage a library: acquisitions, circulation, metadata and e-resource management, resource sharing, reports, and a single-search discovery interface for library users.



WMS helps you achieve your library's mission through collaboration and sharing beyond your local community or group to a global cooperative of libraries.

**Shared data.** OCLC member libraries built and continuously improve WorldCat. WorldCat data serves as the foundation of WMS, providing bibliographic data to simplify many workflows. Beyond WorldCat, WMS allows libraries to share serials patterns, license terms, vendor records, and other information, decreasing redundant tasks across libraries.

**Shared infrastructure.** The WorldShare Platform provides a shared technology infrastructure for WMS libraries. This allows everyone to benefit from shared servers, simultaneous and automatic software updates, and simplified communication with other libraries. Your library may already be on the WorldShare Platform using some of OCLC's other services.

**Shared community.** WMS libraries join an active community within OCLC, a nonprofit library cooperative. This community of librarians collaborates to share best practices and to suggest WMS enhancements to OCLC staff members. WMS was designed with direct feedback from OCLC member librarians, and the WMS community continues to guide its development and advancement.

**A WMS subscription** also includes reports, a full-function link resolver, an A-to-Z list, course reserves, cover art, a mobile-ready discovery interface, a mobile app for library workers, and an OAI-PMH harvesting tool at no extra charge.

**The OCLC Community Center** enables WMS libraries to find information they need in one place 24/7, including product updates, documentation, training and tutorials, events and discussion boards.



**"manage e-resources..."**

"[WMS] allows us to manage e-books, journal subscriptions ... patron-driven acquisition ... All of those things really help us manage e-resources in a way that we didn't before."

### Josh Petrusa

Associate Dean for Collections & Digital Services,  
Butler University  
Indianapolis, Indiana, United States

# Save time and money with library services that work together to **help you manage your library.**



**“effective shared cataloging...”**

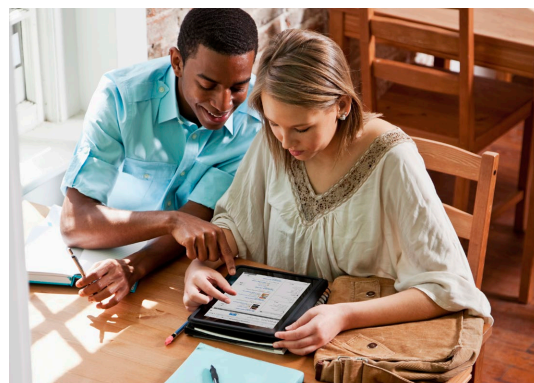
“WMS... allows for effective shared cataloging incorporating national authority files and makes possible the integral management of both electronic and print collections.”

## **Javier García García**

Subdirector de Procesos y Servicios Bibliotecarios  
Universidad Complutense Madrid  
Madrid, Spain

To support one of the largest universities in Europe, the Complutense University Library takes a leading role in collaborating with innovative global partners to further promote and secure the future of all libraries. In addition to partnering with HathiTrust and Google, Javier and his team selected WMS to make their collections more visible and to cooperate on a global shared platform. The library maintains both electronic and print resources in WorldCat for its users and global resource sharing. And Complutense students and faculty now have a new level of bibliographic searching experience that includes all the content of WorldCat.

Read other members' experiences at [oclc.org/stories](https://oclc.org/stories).



## **Add-ons to meet your unique needs**

- **Control the life cycle of your licensed electronic resources** by consolidating the information you need to keep licenses active with WorldShare License Manager.
- **Benchmark and compare your collections with others** to support collection development decisions with WorldShare Collection Evaluation.
- **Build custom reports, charts, and data visualizations** to meet reporting requirements and to help others understand your library's data with WorldShare Report Designer.

## **Visit [oclc.org/WMS](https://oclc.org/WMS) to learn more.**

Sign up for webinars, see recent announcements about WMS, watch videos of librarians who use WMS, learn more about included and optional services, and more.

**Because what is known must be shared.®**

