

October 2023

# OCLC Research Library Partnership



A background photograph showing three men in a professional setting, likely a meeting or conference. The man on the left is wearing glasses and a dark suit, gesturing with his hands. The man in the center is older, has a white beard, wears glasses, and a dark jacket. The man on the right is wearing a blue striped shirt and is looking towards the other two. A blue banner with white text is overlaid at the top.

# OCLC Research

Mission is to accelerate and scale library learning, innovation, and collaboration that make breakthroughs possible

Serving the global network of OCLC member libraries & beyond since 1978

Devoted exclusively to the challenges facing libraries and archives

# RLP OCLC Research Library Partnership



A unique transnational network of research libraries



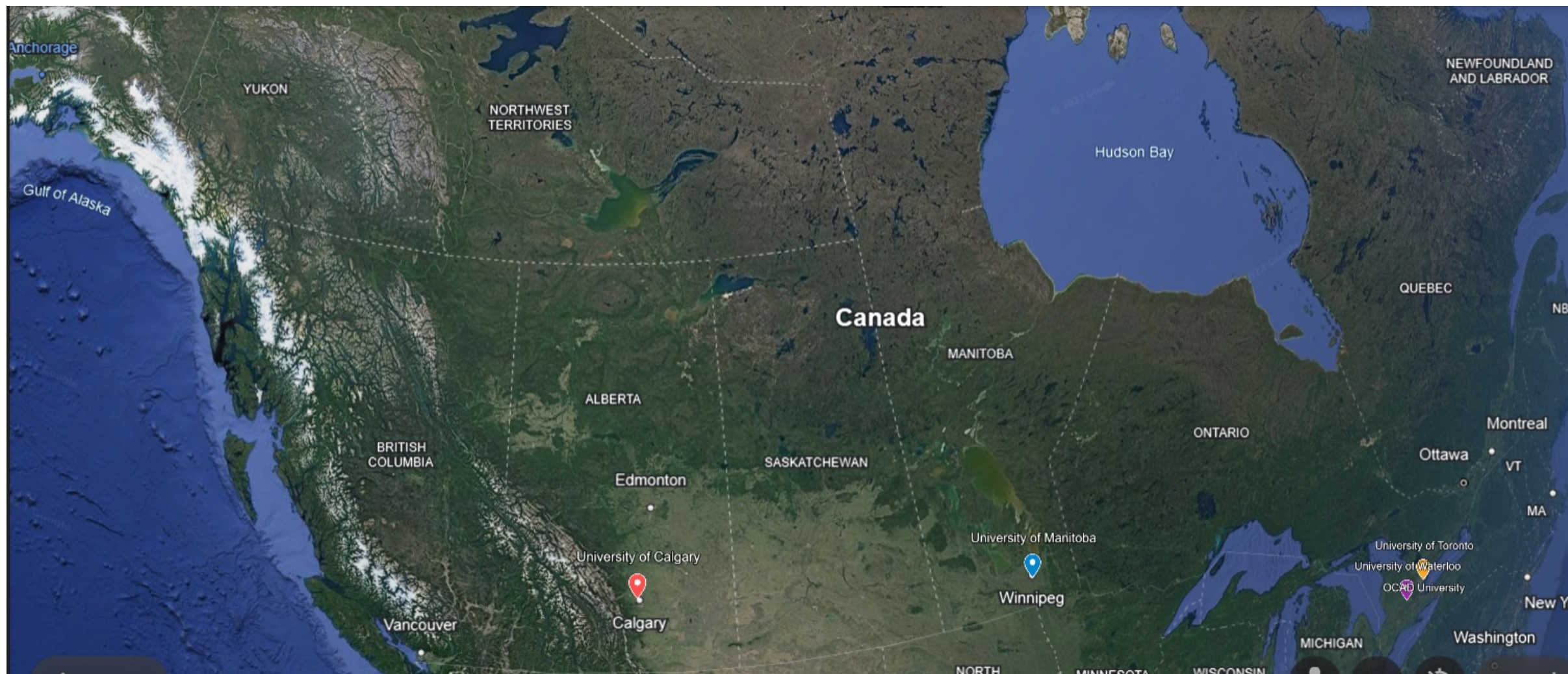
Supported by a combination of partnership dues and co-investment from OCLC



Supports engagement and research activities



Provides a way for libraries to engage directly with OCLC Research





Activities are led by an energetic team who work with member institutions to develop an array of programming for both senior library leaders and staff, virtually and in person.





# Programmatic areas



Research support

Unique and distinctive  
collections



Learning Together



Resource sharing /  
Collective collections

Next generation metadata



# How?



Knowledge  
sharing events

Engagement

Thought  
leadership

Strategic  
network  
partnerships

SHARES  
resource  
sharing  
consortium

# Knowledge sharing events



## “Works in Progress” webinar series

- Princeton’s Personal Librarian Program—building relationships across campus
- Towards diversifying collections—implementing strategies
- Supporting campus goals through a library-led Office for Open Research at the University of Manchester

## Small group discussions

- Addressing bias in research analytics
- Collections as data: State of the field and future directions

## Workshops

- Social interoperability workshop

<https://www.oclc.org/research/events/works-in-progress-webinar-series.html>

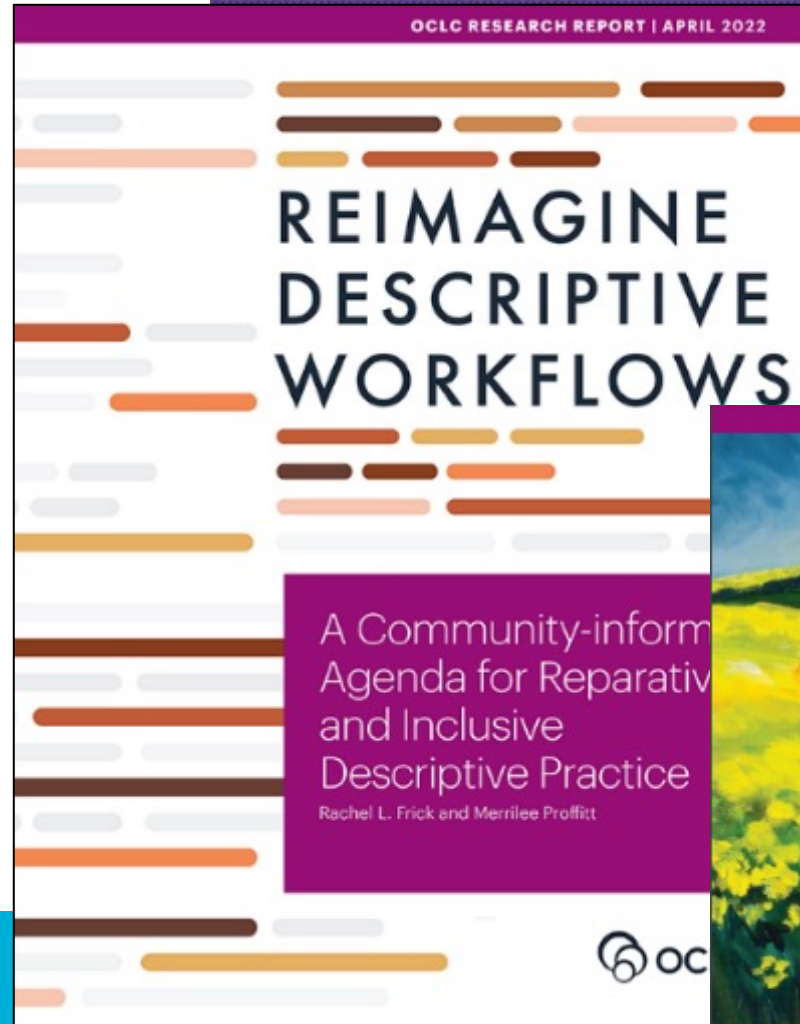
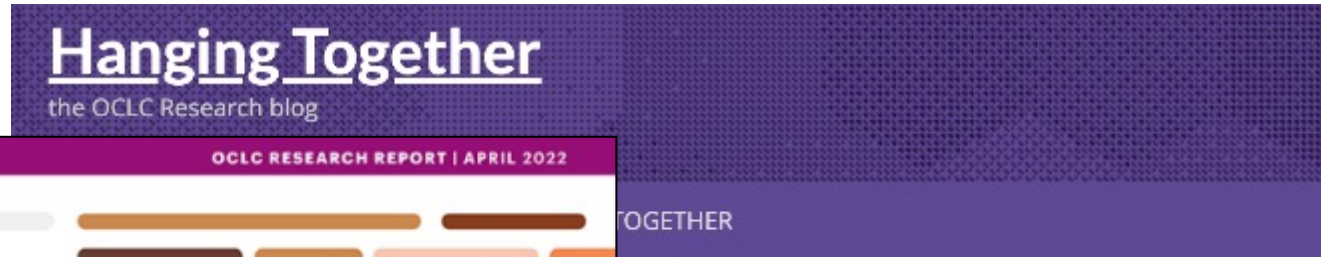
# Engagement

- Ongoing working groups
  - Metadata managers
  - SHARES Best Practices Working Group
- Ad hoc working groups
  - Collection Building and Operational Impacts Working Group
- Sabbaticals, visiting scholars
  - Research Information Management in the United States
  - Responsible Operations: Data Science, machine Learning, and AI in Libraries



# Thought leadership

- OCLC Research blog
- Surveys
- Research reports



# Strategic network partnerships

The RLP works collaboratively with strategic partners on both engagement and research interests of common interest.

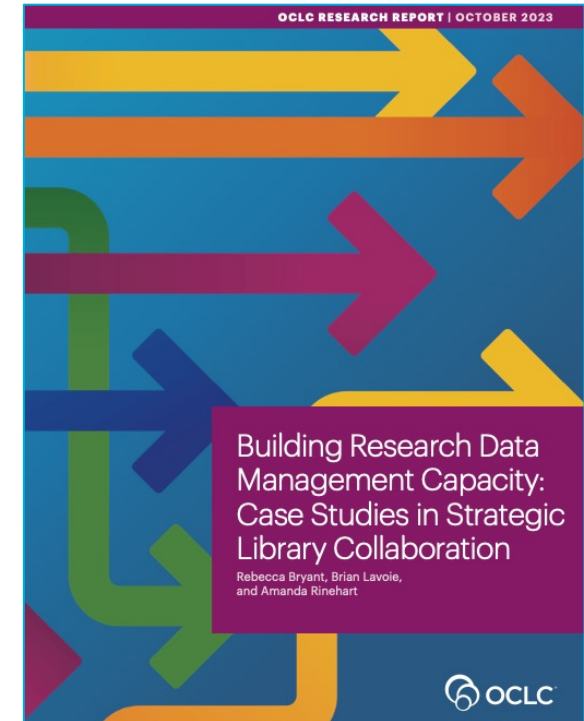
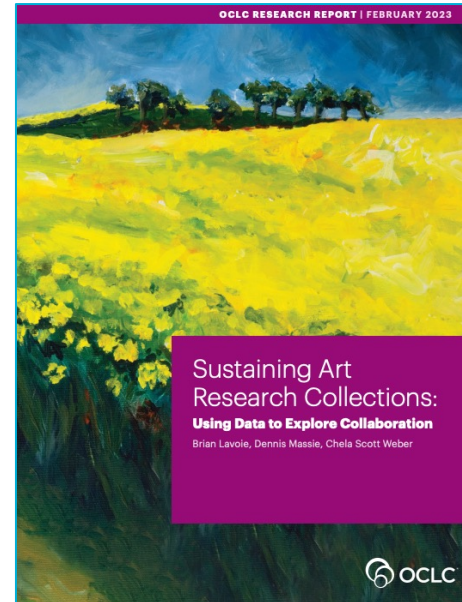
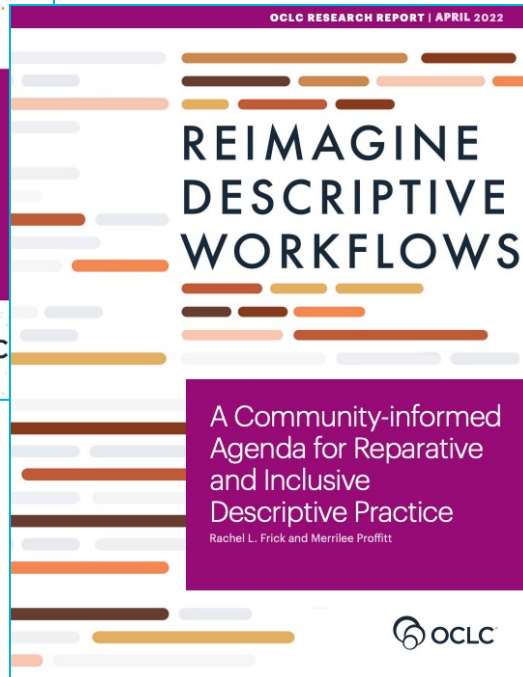
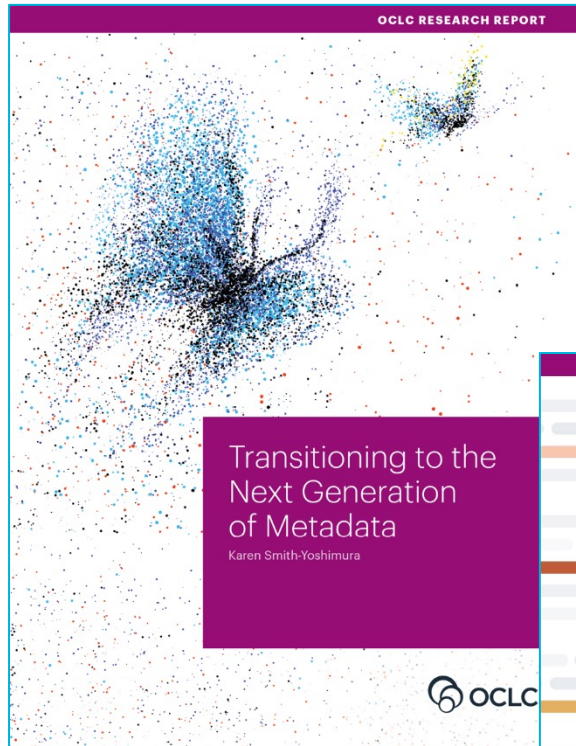


# SHARES resource sharing consortium

- Resource sharing program for members of the OCLC Research Library Partnership
- About 75 institutions in the US, Canada, the UK, & the Middle East
- Innovative trust network providing access to unique collections



# Canadian perspectives



# Learning together



- Diversity, equity and inclusion at the center
- Skilled "art of hosting" conveners
- Spirit of caring
- Making our time together count



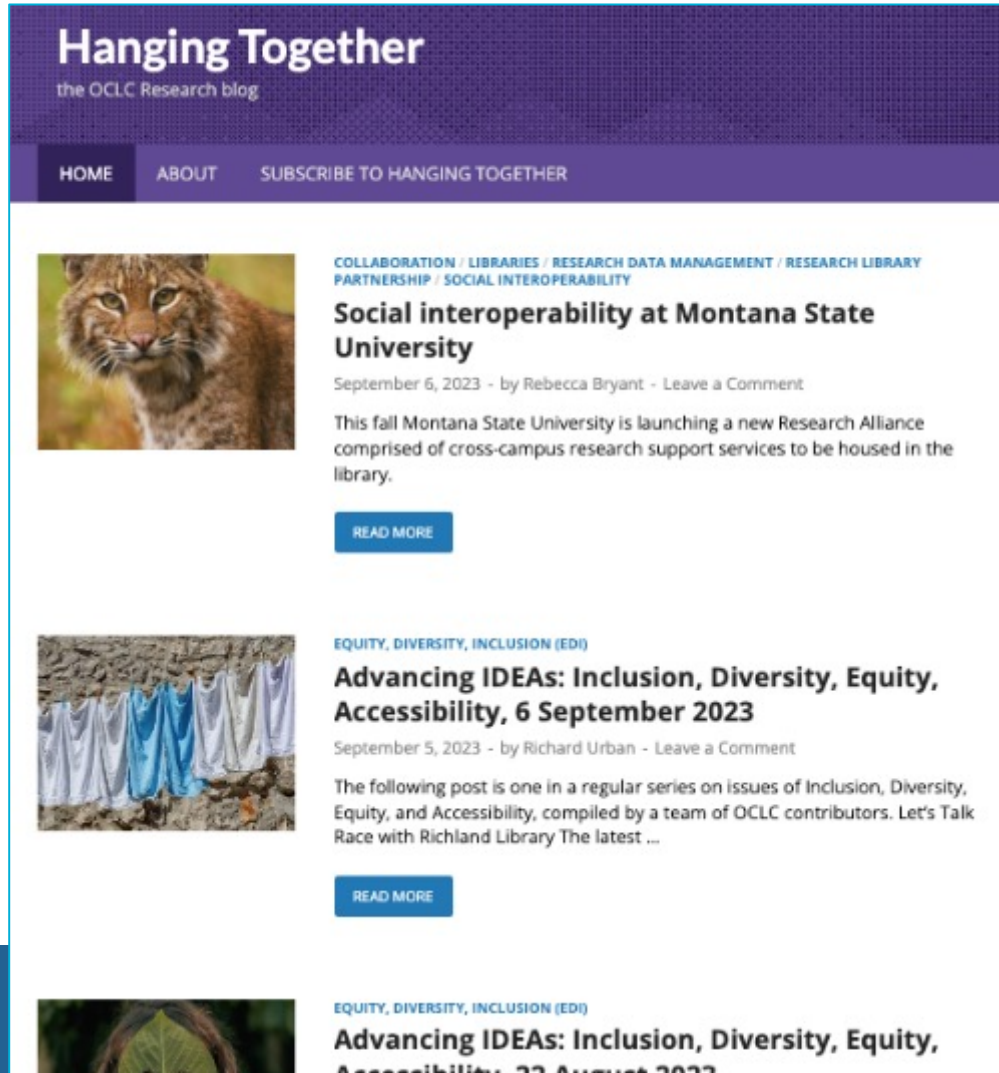
Merrilee Proffitt  
[proffitm@oclc.org](mailto:proffitm@oclc.org)



Mercy Procaccini  
[procaccm@oclc.org](mailto:procaccm@oclc.org)

# Connect with us

<https://hangingtogether.org/>



<https://www.oclc.org/research/partnership/join.html>

## The OCLC Research Library Partnership

[About](#) [Our work](#) [Partners](#) [Working groups](#) [Interest groups](#) [Join us](#)

### Becoming an OCLC Research Library Partner

The OCLC Research Library Partnership (RLP) is a transnational network of research libraries, supported by a combination of partnership and investment from OCLC. We welcome your interest in joining.

### Why joining matters

Partner dues directly support our work to assist libraries as they evolve to meet 21st century challenges. Dues give our staff the resources to convene conversations and support projects that lead to prototyping, reports, white papers, webinars, and other outputs.

### Partner benefits

Our work focuses on addressing the pressing needs of research libraries in the 21st century and that work is shaped and influenced by our partners. We offer multiple opportunities and formats for staff at your institution to learn, engage, and partner.

- **Online learning:** The [Works in Progress Webinars](#) are live, participatory online learning opportunities focused on leading edge work and our partner institutions. Our webinars provide a cost-effective way for members to stay up-to-date on emerging practices.
- **Discussion:** We frequently host small group discussion on topics related to our programmatic foci.
- **Collaborative research:** We engage members in research collaboratively through ad hoc working groups.
- **Information sharing:** RLP email and discussions lists facilitate sharing and allow subscribers to receive updates about webinars, events, projects, and more.
- **Consultations:** RLP staff consult directly with partner institutions, sharing their expertise on resource sharing, metadata, distinctive collections, and more.