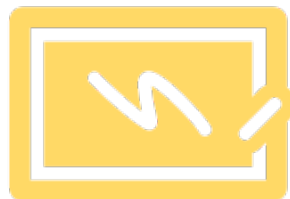




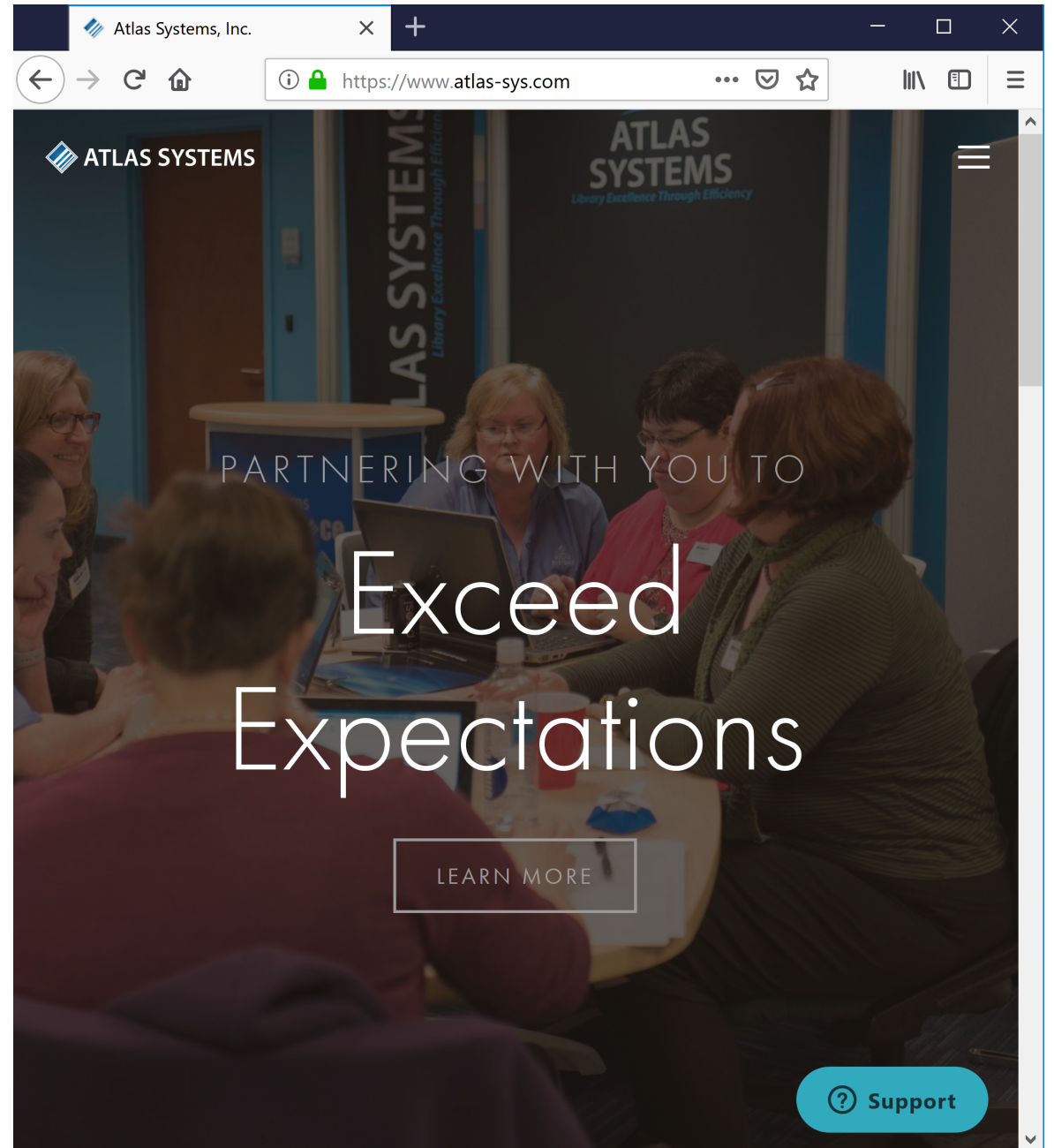
Unmediated Reprints Desk for ILLiad

Matt Calsada, Senior Developer
Stephanie Spires, Chief Operations &
Service Officer



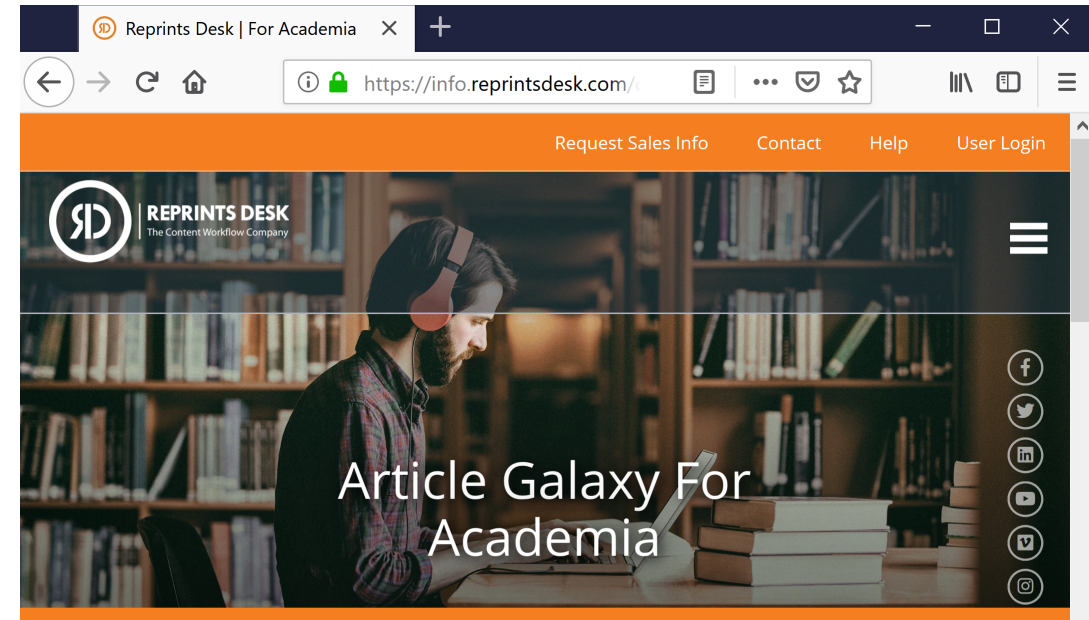
Atlas Systems

- Developers of ILLiad, Ares, Aeon
- Hosting & consultation services
- Partners with libraries and other companies to create innovative solutions



Reprints Desk

- Offers mediated and unmediated solutions
- Integrates with ILLiad & Odyssey



Removing Barriers To Access

Article Galaxy is a cost-effective way to supplement your interlibrary loan (ILL) needs and subscriptions, 24 hours a day, 7 days a week. Compatible with your ILL department workflows or any OpenURL link resolver, Article Galaxy delivers 100% native PDFs of journal articles or book chapters directly to your inbox in minutes. Ask us for special library consortia pricing. No start up fees required.

Big Picture

- Cost of subscriptions increasing
- Copyright costs
- User expectations

Background

- Concierge customer Florida State University had an idea for saving money and streamlining services to researchers without causing undue stress on library staff
- They worked with Atlas Systems and Reprints Desk to facilitate a workflow and build tools

Future
Developer?



This Photo by Schekinov Alexey Victorovich is licensed under CC BY-SA

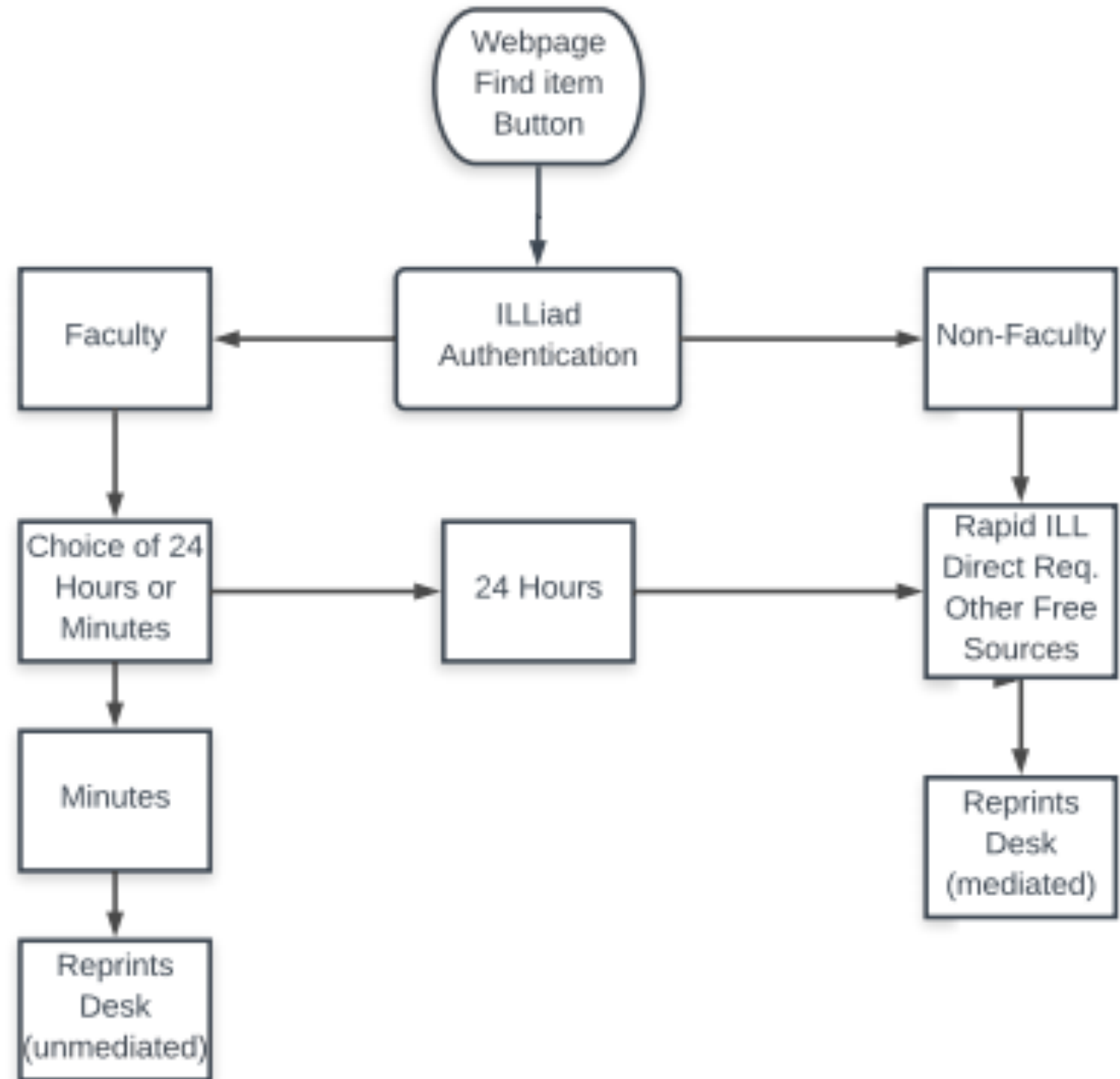
Never lose the
child like wonder.

It's just too
important.

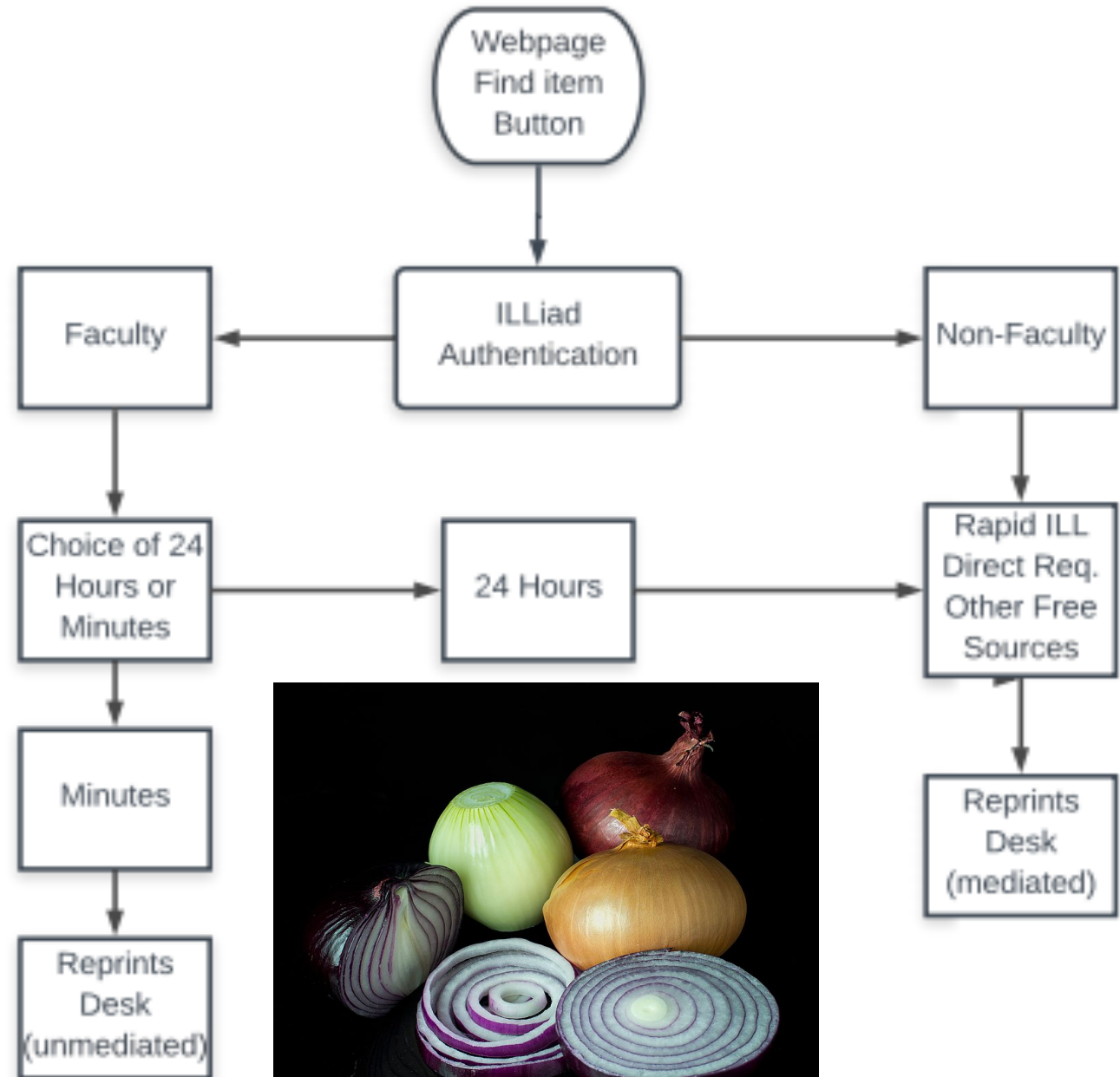
It's what drives us.

Help others.

Design Evolution



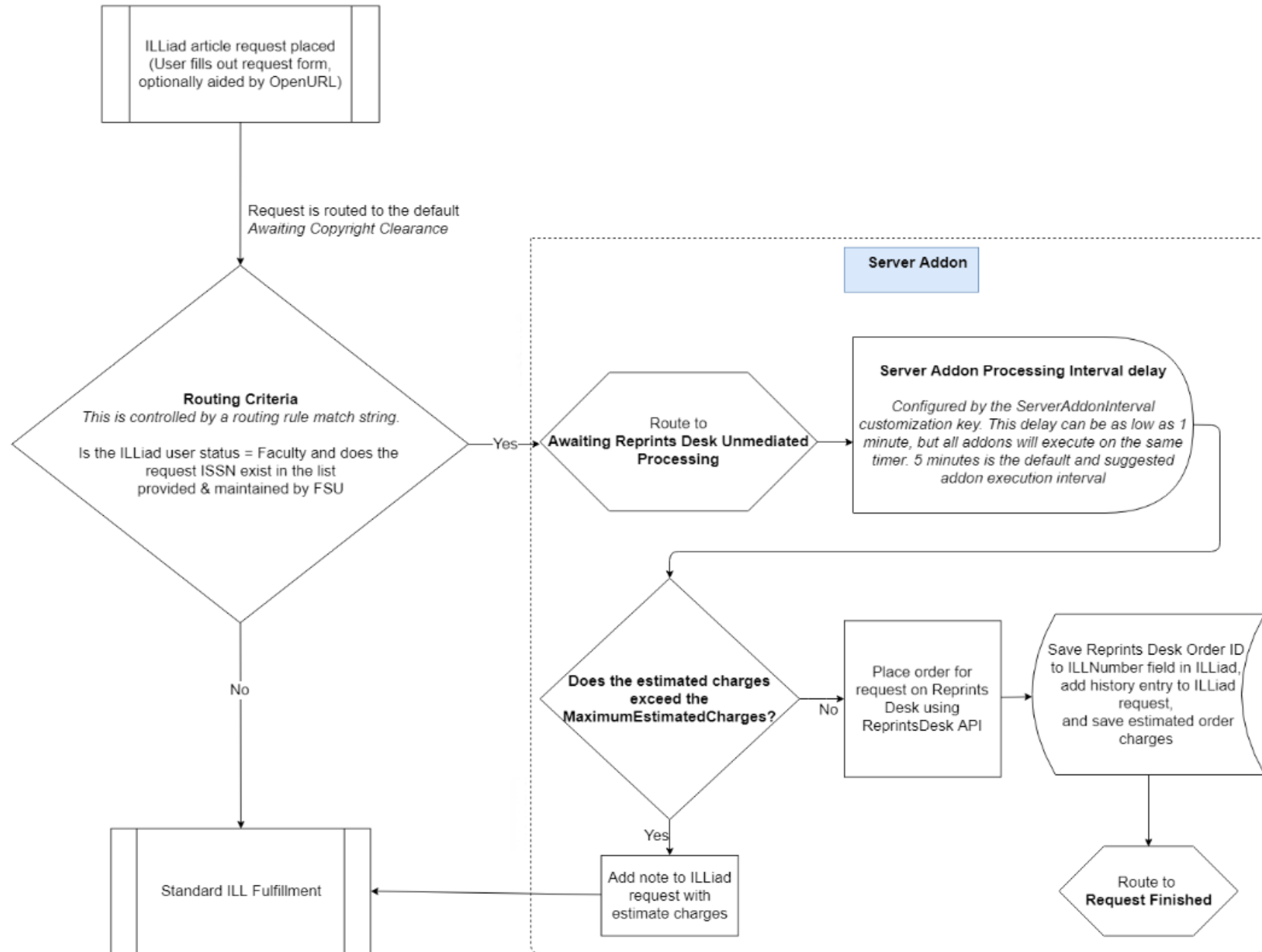
Peeling back
the layers



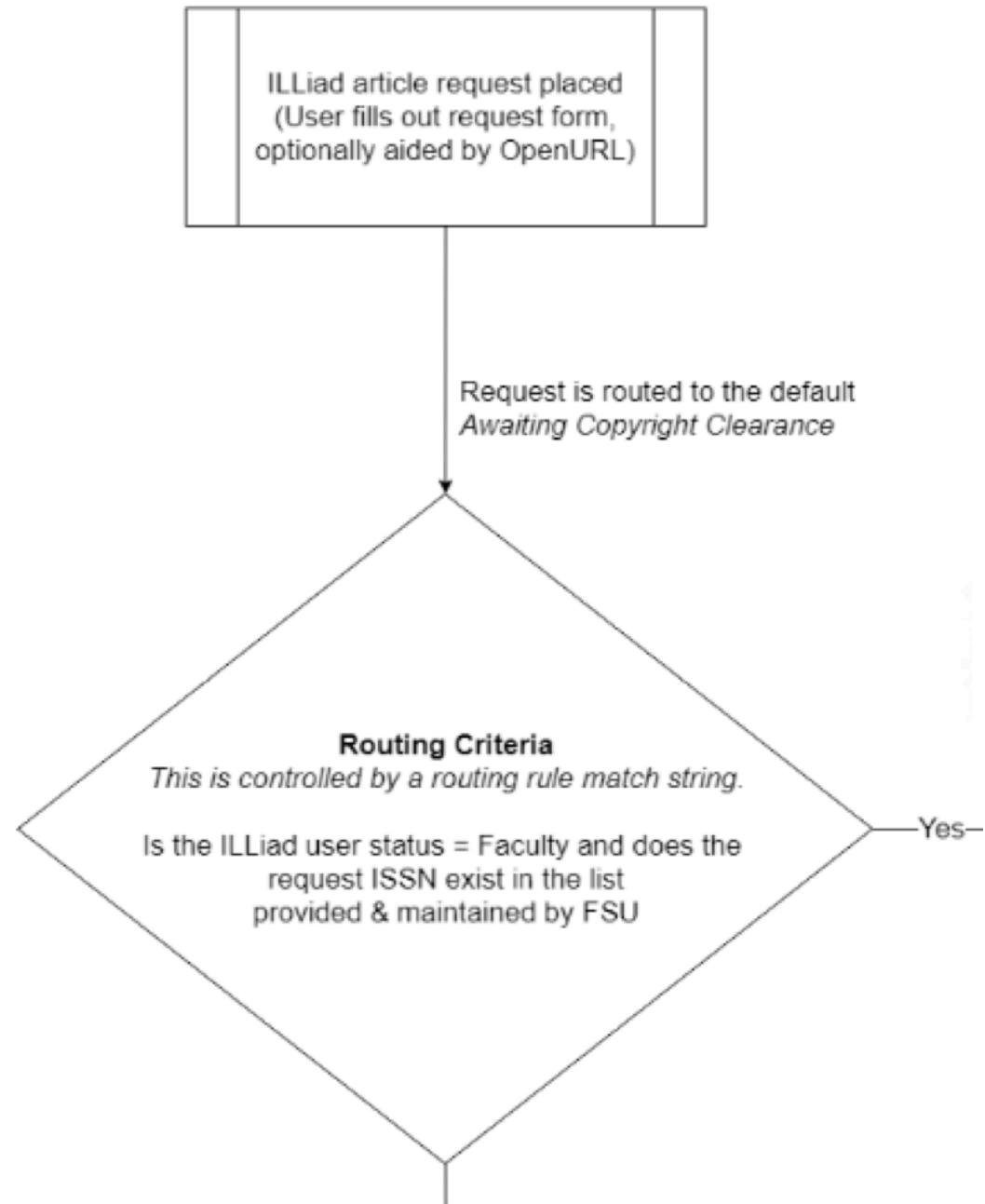
How it works

- Using discovery platforms or regular web request forms, researchers submit requests to ILLiad
- ILLiad routing moves the request to processing queues based on staff selected criteria and library policies
- Server addon picks up the requests and places orders via Reprints Desk
- Customer receives article via Odyssey

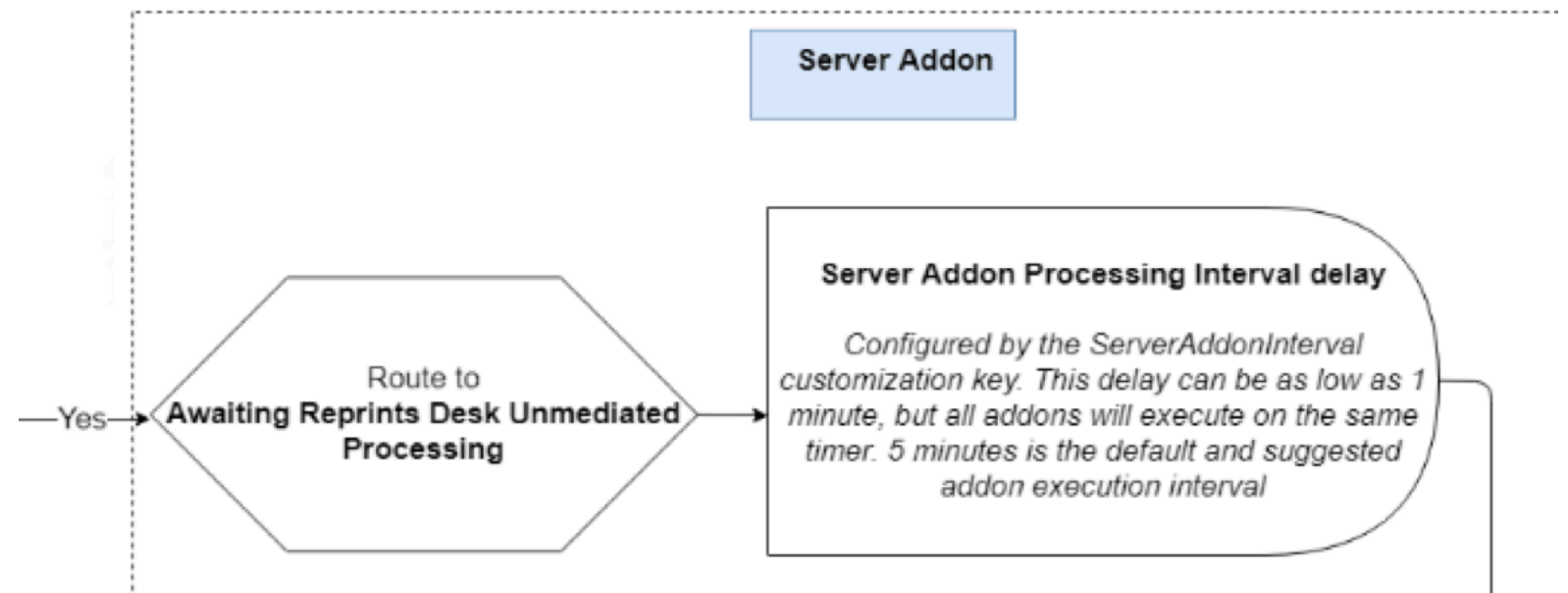
Final Workflow



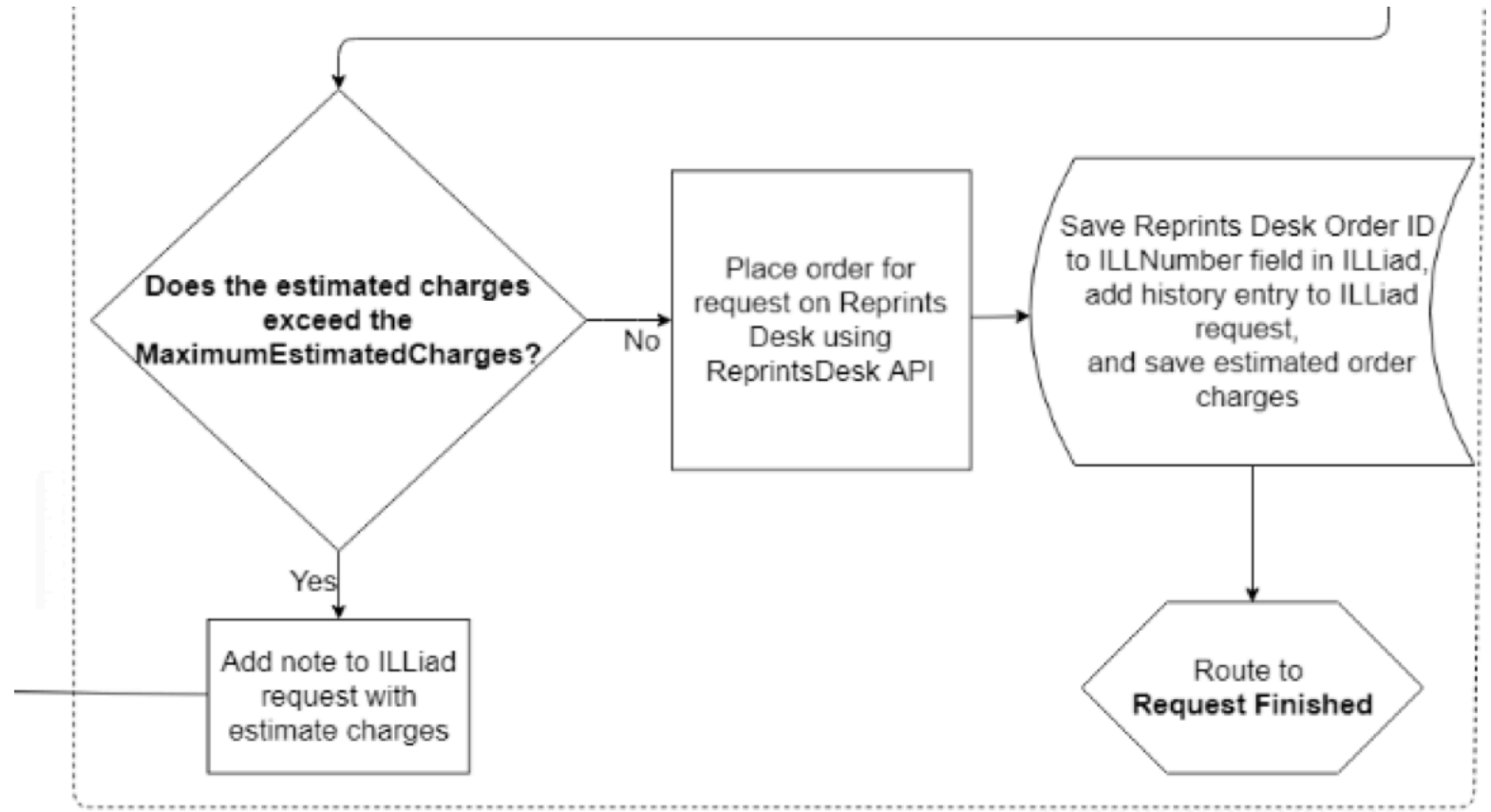
Final Workflow



Final Workflow



Final Workflow



What you need

- ILLiad
- ILLiad Server Addon for Unmediated Reprints Desk
- Reprints Desk account
- Workflow modifications & setup that may include:
 - Routing rules
 - Custom Queues
 - You may want to route to the monitoring queue
 - Email template edits
 - Web page edits
 - Staff training

Addon Configuration

- Setup

Download the addon

<http://bit.ly/UnmediatedReprintsDeskAddon>



**Install the server addon in
Customization Manager**

Configure the addon settings

Setting Name	Value
MonitorQueue	Awaiting Reprints Unmediated Processing
ReprintsDeskAPIUsername	[REDACTED]
ReprintsDeskAPIPassword	[REDACTED]
MaximumEstimatedCharges	50.00
ExceedsMaximumChargeQueue	Unmediated Reprints Desk Error - Exceeds
OrderPlacedQueue	Request Sent
ReprintsDeskOrderIdField	ILLNumber
RoutingRuleField	ItemInfo5
ReprintsDeskLenderSymbol	REPRINTSDESK
ErrorQueue	Unmediated Reprints Desk Error
NotePrefix	Unmediated Reprints Desk -

Testing

- Reprints Desk staging server
- ILLiad Testweb
- Routing

- Get an account with Reprints Desk
- Make decisions about your workflow
- Be careful when setting up routing

Routing

- Which researchers qualify?
- What kinds of requests qualify?
- What publications qualify?
- Does the researcher need/want fast turnaround?
- Spreadsheet
- Other

```
t.PhotoJournalYear >  
CONVERT(varchar(4),(DATEPART(year,  
GETDATE())) - 6))  
  
AND t.ItemInfo5 = 'FAST'  
  
AND u.Status IN ('Faculty','Distance Ed')  
  
AND t.ISSN IN  
('03091708','18759637','12709638','143484  
11','23522151','01681923','0308521X')
```


Delivery

- Add Address Record
- Configure Trusted Sender

Email Notifications

- Information to researchers about delivery

- Some thoughts:
 - Promote the service
 - Provide cost or copyright information

Web edits

- Ask researchers if they want faster service?

Photocopy Request

* Indicates required field

Enter information below and press the Submit Request button to send.

Describe the item you want

* Title (Journal, Conference Proceedings, Anthology)

Please do not abbreviate unless your citation is abbreviated

Do you need Express Service?

The library pays additional fees to the document provider for fast express service.

Volume

Before launch

- Prepare staff to answer questions
- Document processes
- Train on workflows

Reprints Desk estimate (18759637, 2011, 8 pages)

Service Charge: 4.50, Copyright Charge: 19.45

The copyright estimate is based on the citation information you have provided. If the citation information is incorrect the copyright charge might be different. This estimate is for basic single article document delivery only. If you request other services, like eCTD, Mighty Linkout Machine, or bouncebacks, the final price may be different.

Reprints Desk order submitted
(ID 5862579)

[http://www.reprintsdesk.com/la
nding/os.aspx?o=5862579&r=39
5237934](http://www.reprintsdesk.com/landing/os.aspx?o=5862579&r=395237934)

Unmediated Reprints Desk -
Failed to retrieve a valid
estimate. [Invalid User
Name or Password]

Expectations

- Average cost of article
- Turnaround time
- Considerations
 - DOI
 - Citation info



Resources

- <https://prometheus.atlas-sys.com/display/ILLiadAddons/ILLiad+Reprints+Desk+Unmediated+Server+Addon>
- <https://info.reprintsdesk.com>
- Atlas Concierge Services
- Video coming soon