



Research data policy: working towards maturity

JACQUELIJN RINGERSMA, WAGENINGEN UNIVERSITY & RESEARCH

#OCLCEMEARC19





Wageningen University & Research

RDM

&

How it all started

You need drivers!

Transparency, quality and validation

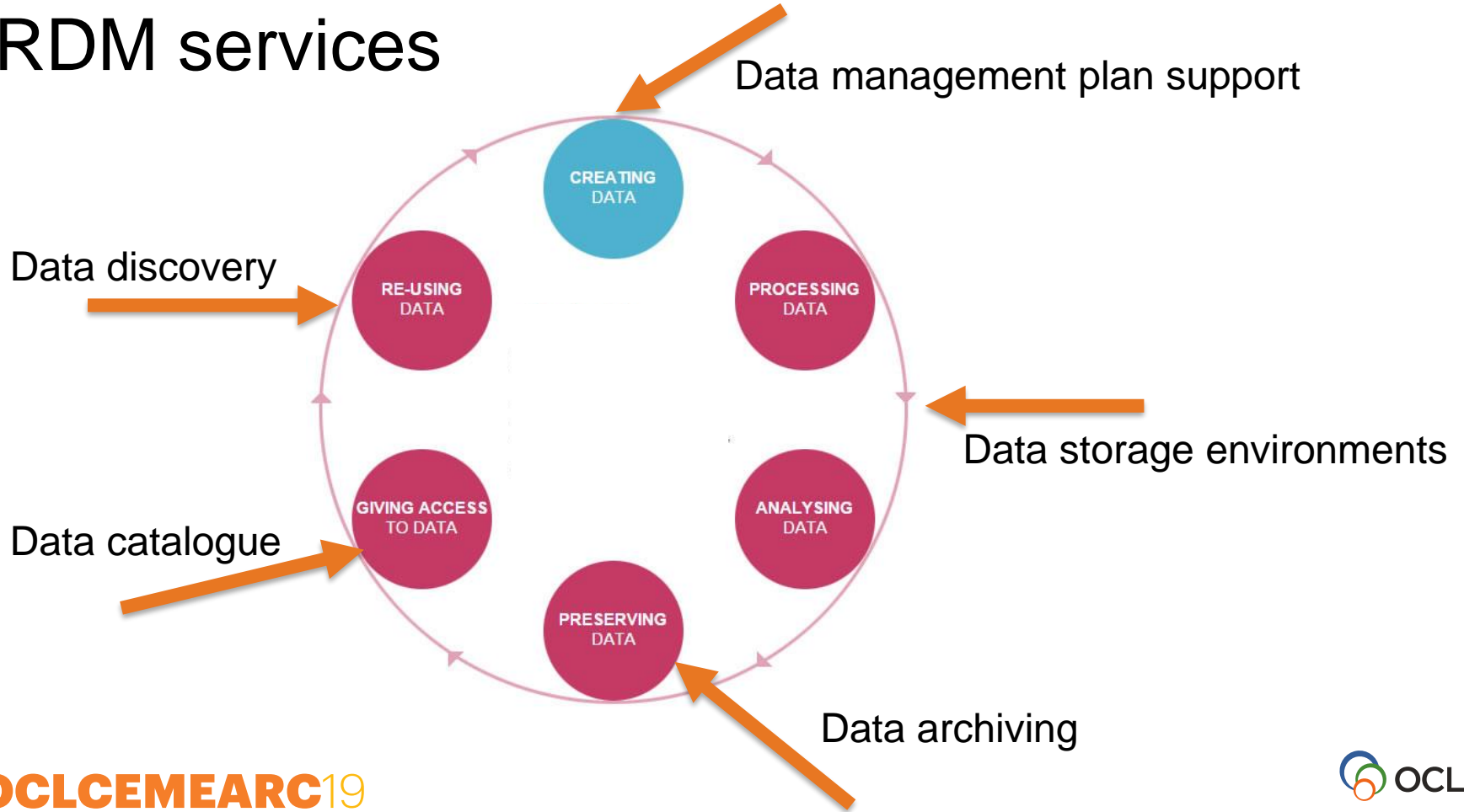
Science for society

Financial



- 2010: first discussion on data between researchers, graduate schools and library
- 2014: *first RDM policy*: all PhD students and University chairs must have a Data Management Plan
- 2015: RDM services by Library, IT, legal and archive

RDM services



**SO:
did it work?**

- Most PhD students and most chair groups developed Data Management Plans
- Awareness had grown

but...

- Archiving of data did not meet expectations
- Data Management was still a front runner issue

In the meantime:

#OCLCEMEARC19



- Funders started to demand Data Management Plans and Data archiving
- Societal pressure increased (EU, NL)
- Journal editors started to demand supplementary data
- Code of conduct increased focus on data

• National collaboration in RDM



Illustratie Studio Koelewijn Brüggewirth



Landelijk
Coördinatiepunt
Research Data
Management

**So the development
went on:**

Additional RDM policy (2018)

Based on:

National frameworks and FAIR principles

Diversity in the organisation

Best practices in the organisation

During research:

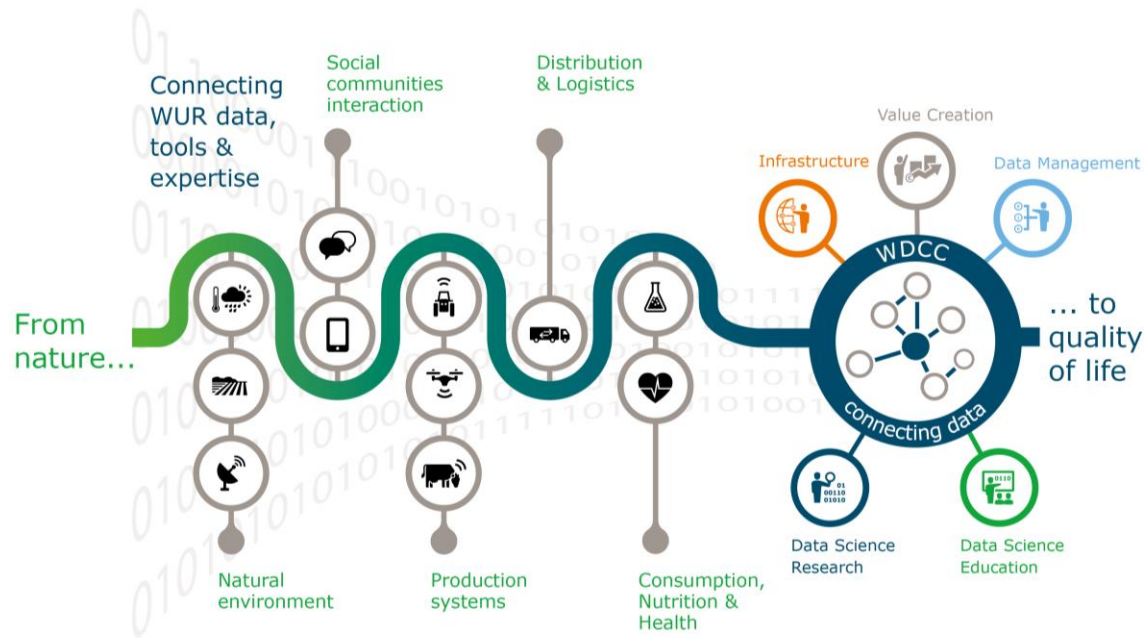
Store their data on WUR servers, or on servers approved by IT (RDM services)

After research:

Archive all data underlying a publication in a trusted archive, which meets FAIR criteria

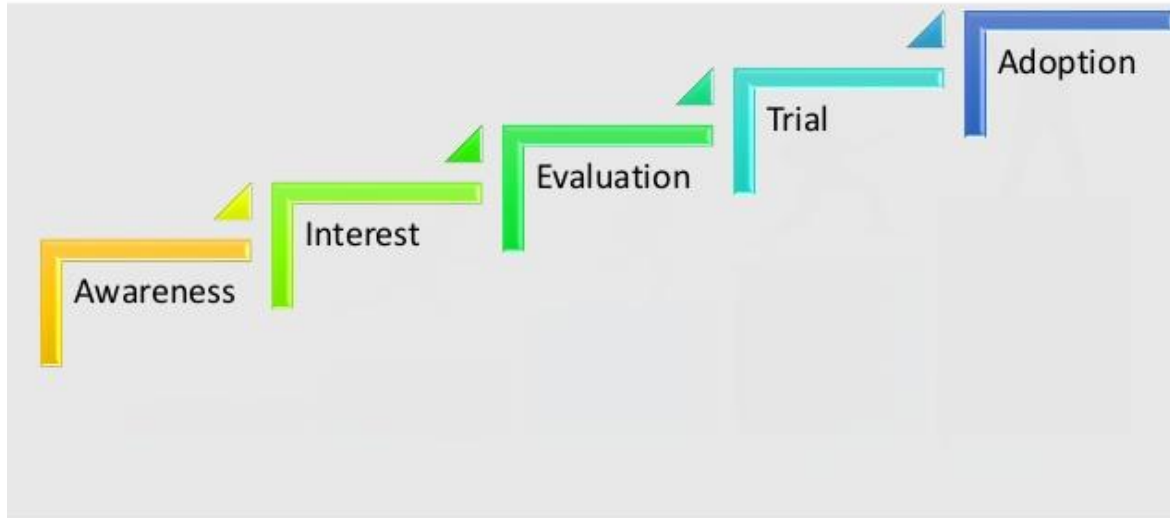
Register their data in the institutional repository

Commitment from the board led to the creation of the Wageningen Data Competence Center



SO:
does it work?

STAGES IN ADOPTION PROCESS



FAIR Data Science for Green Life Sciences



- WUR want to be FAIR in 5 years time
- Data Stewardship
- Data sharing policy

- Drivers are essential
- Engage researchers in policy development
- Policy should cover the total data cycle
- Develop services
- Awareness – interest – trial – adoption
- Library role in archiving and DMP
- Data stewardship @ group level
- From data management to data science
- Commitment from Board is essential



EMEARC¹⁹ CHANGE THE GAME

THANK YOU