



Weaving a Library Network

The case of Santa Coloma de Gramenet

DANIEL GARCÍA GIMÉNEZ, DIPUTACIÓ DE BARCELONA

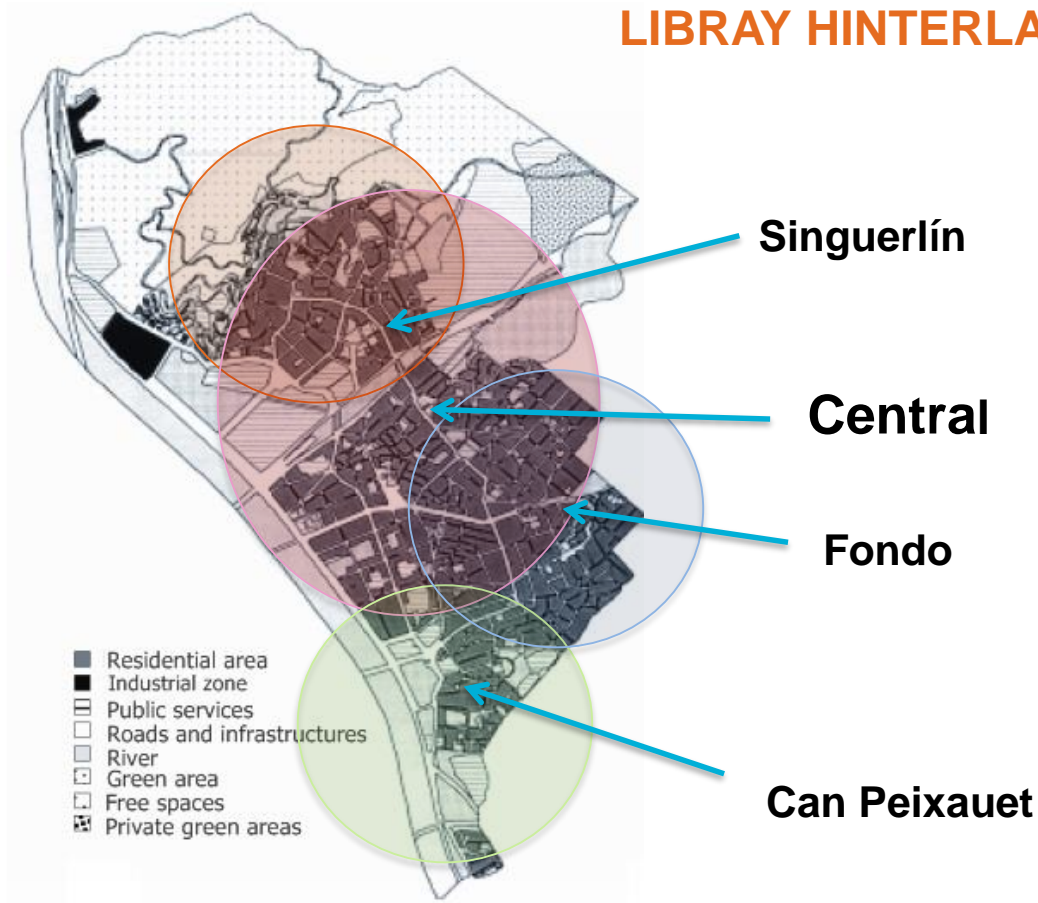
Backdrop



Daniel García Giménez

The backdrop behind a Library Network

LIBRARY HINTERLANDS



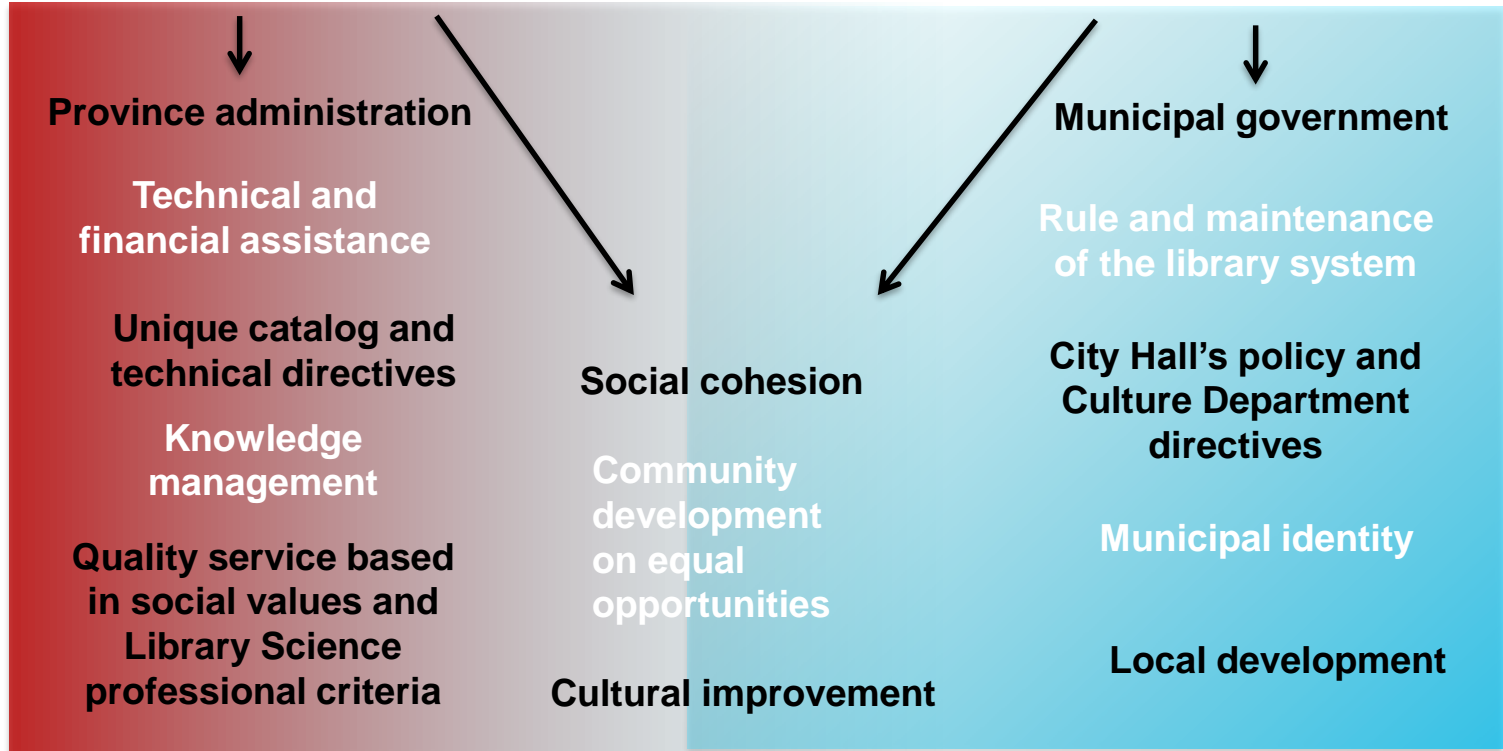
CITY HIGHLIGHTS

- Population: **120.000**
- Proximity and good connection with Barcelona
- Very different neighborhoods
- Low income ratios and education levels
- Unequal opportunities

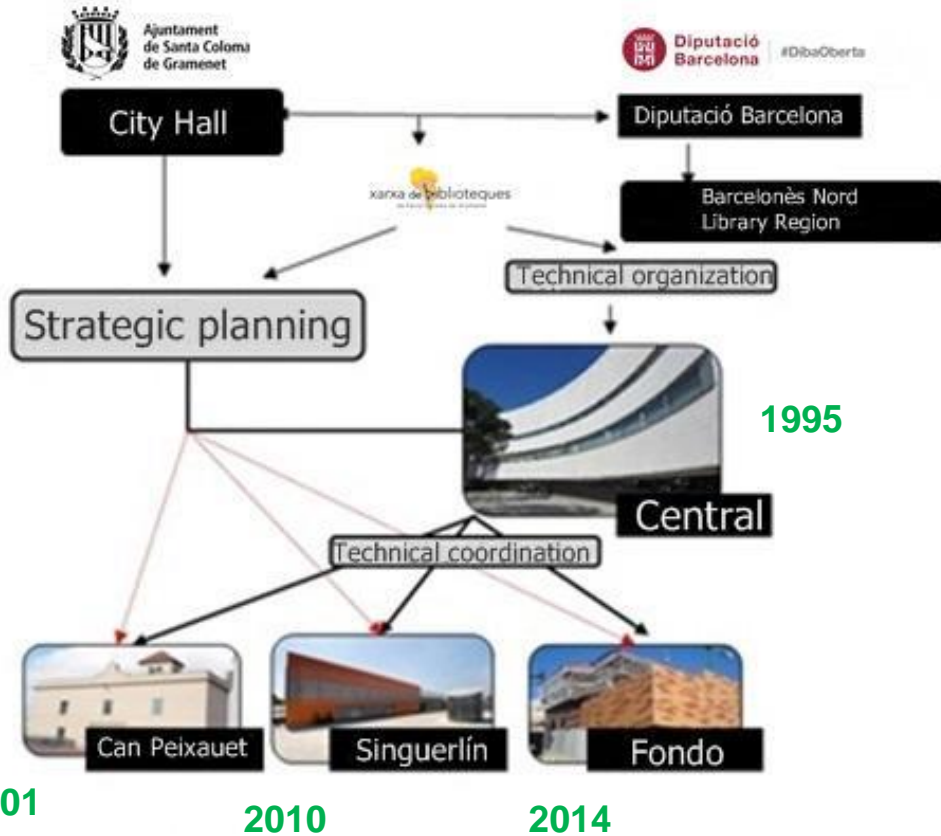


Competences
and
contributions →

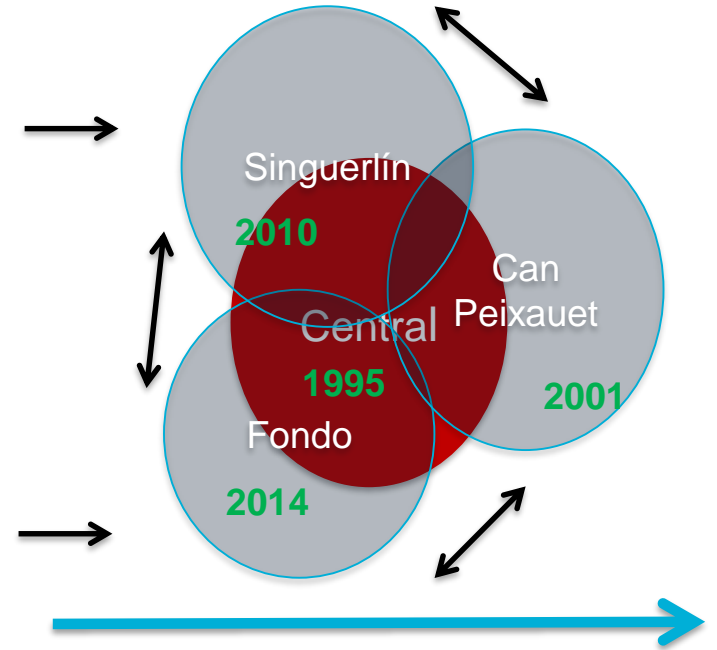
Essential
goals →



STRUCTURE



MOVEMENT



Transformation

#OCLCEMEARC19

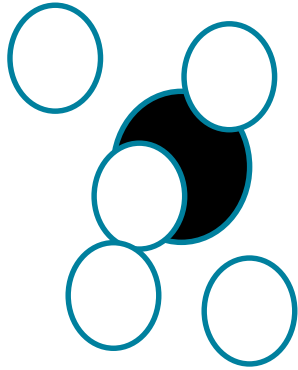




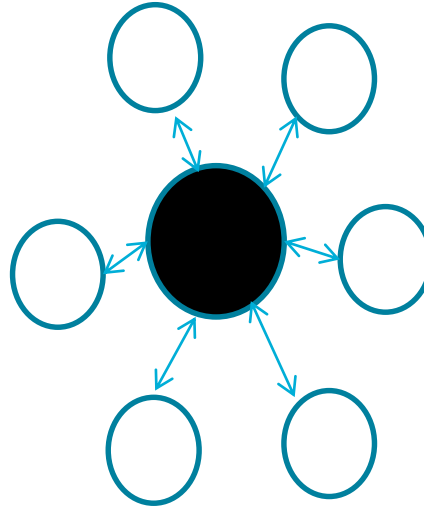
Daniel García Giménez

A planned transformation

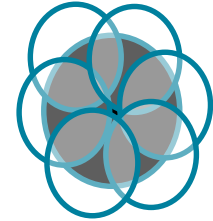
NETWORK MODELS



Our past



Our present

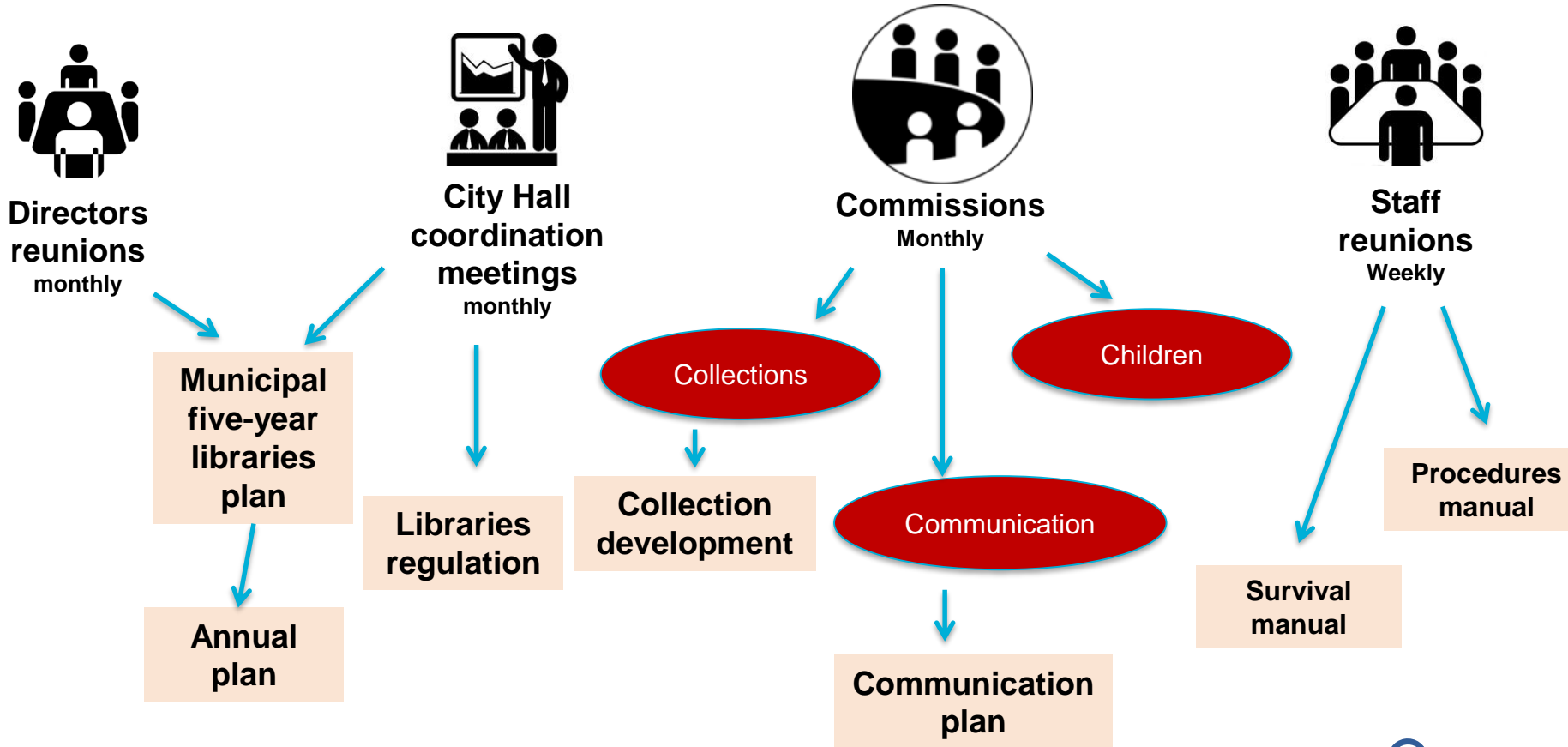


Diversity of technical
criteria
Neighborhood projects
Decentralized planning
Self-organization
Private communication

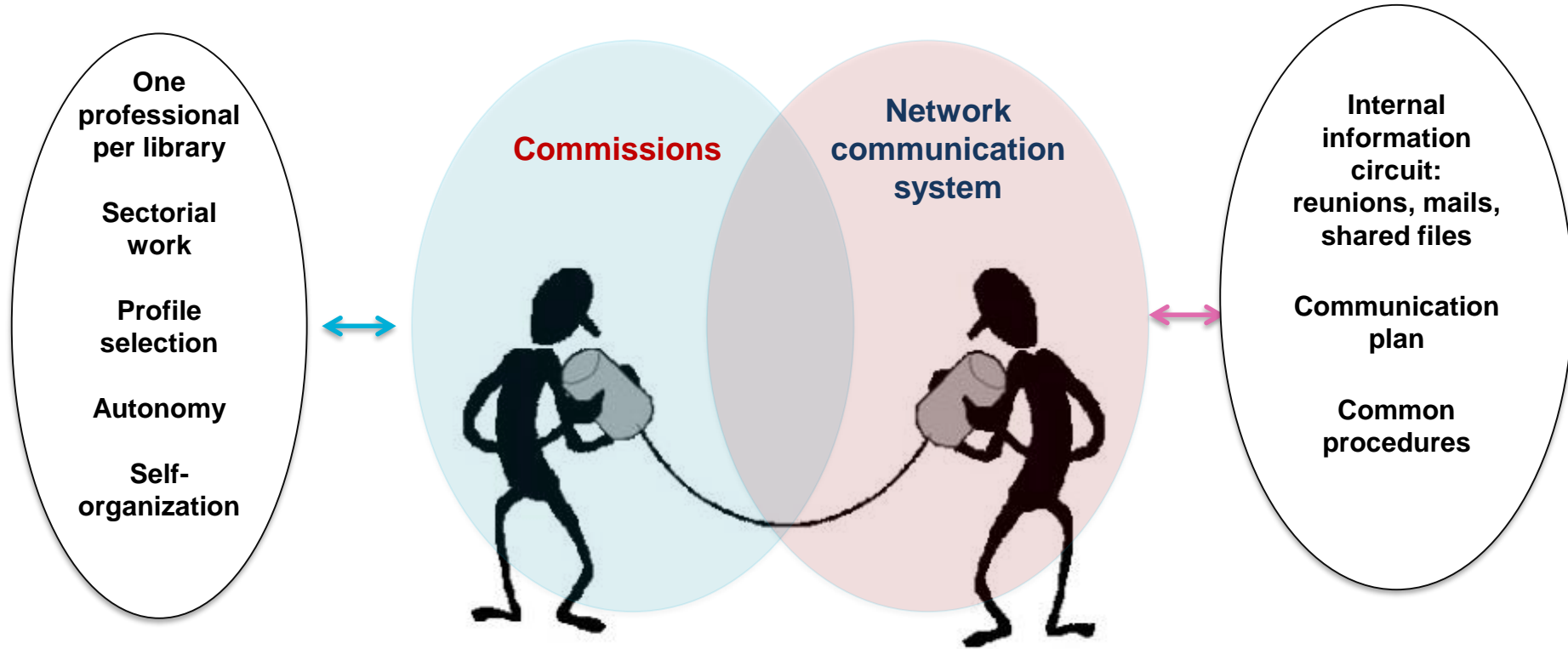
Homogeneity
Hierarchy
Centralized planning
Centralized
communication
Network project

Coordination
Transversality
Sectorial work
City project
Inclusive planning
Shared
Information circuit

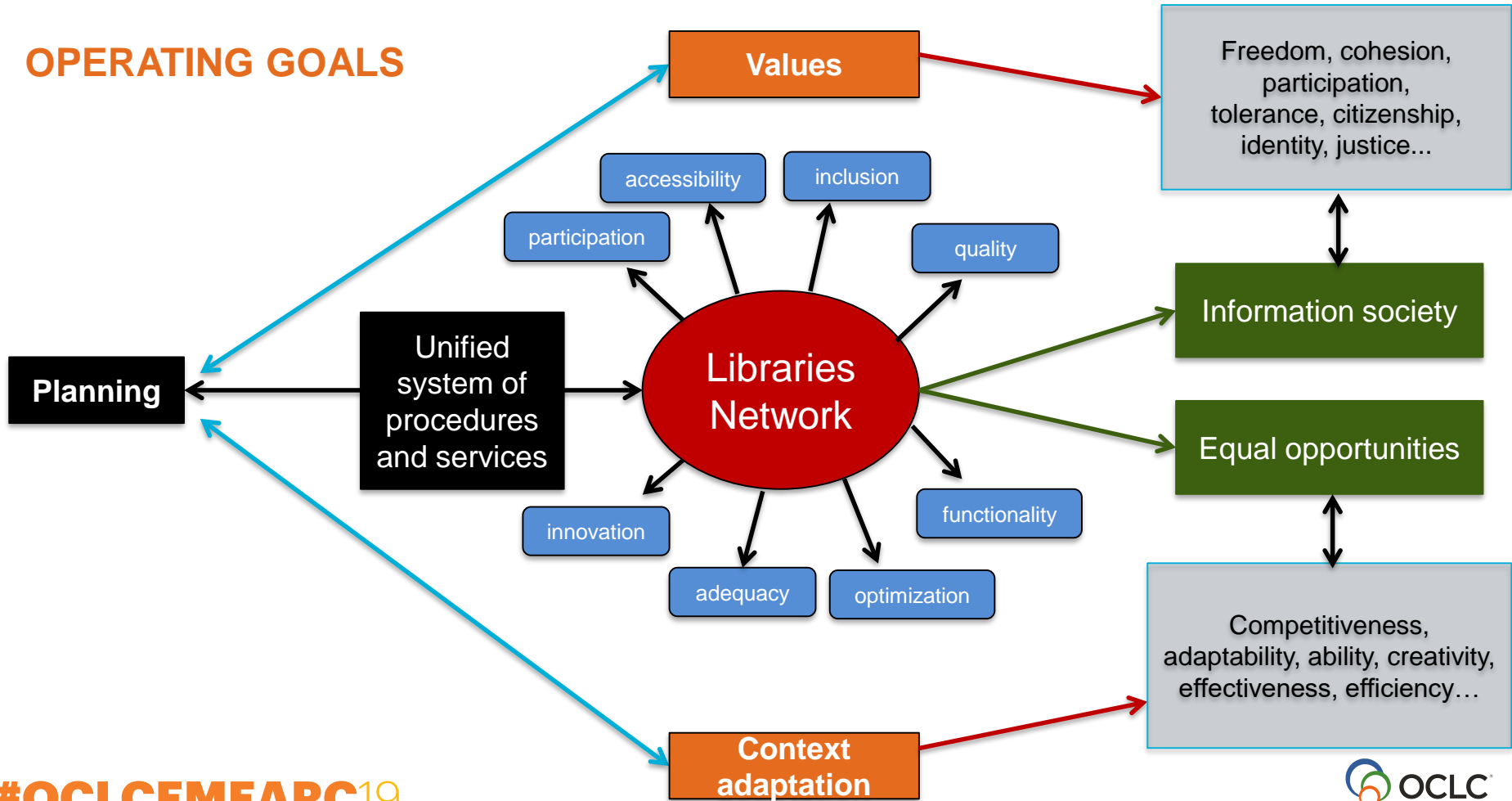
HAVING A PLAN



TRANSVERSALITY



OPERATING GOALS





EMEARC19 CHANGE THE GAME

THANK YOU

Daniel García Giménez

DIPUTACIÓ DE BARCELONA

garciagn@diba.cat