

**OCCLC cataloging  
community meeting**

First session

# The OCCLC cataloging community meeting

**18 JUNE 2025**

**#OCLCcataloging**





## Emcee

Hank Sway, Product Manager, Metadata &  
Digital Services

**OCLC**

# Welcome

# Today's schedule



- Welcome
- Metadata Panel
- Break

# Today's schedule



- Welcome
- Metadata Panel
- Break
- OCLC product update
- OCLC quality update
- Closing



# Code of Conduct

OCLC is committed to providing a friendly, professional, safe, and welcoming experience for all attendees of this event.

**Participants are expected to maintain professional and civil discourse throughout the webinar.**

- Participants may hear some views with which they do not agree. We encourage participants to consider views that differ from their own with an open mind and respond to differences in a respectful way.
- We will not tolerate harassment, intimidation, or discrimination in any form.

**Failure to abide by these expectations will result in removal from the webinar.**

- Attendees should contact the OCLC meeting host directly if there are any concerns about unacceptable behavior.

We value you and your participation, and we appreciate your help in making this event a success.

# Housekeeping...

## Platforms

This event is being offered in two ways:

- **Webex**
  - Limit on the number of attendees
- **Vimeo livestream**
  - [oc.lc/occm-livestream](https://oc.lc/occm-livestream)
  - Unlimited attendees



## Questions

- **Webex**
  - Please submit questions in chat and address the chat to “everyone”

A screenshot of a Webex chat interface. It shows a dropdown menu with 'Everyone' selected, a text input field with the placeholder 'Enter chat message here', and a send button. At the bottom, there are buttons for 'Participants' and 'Chat'.

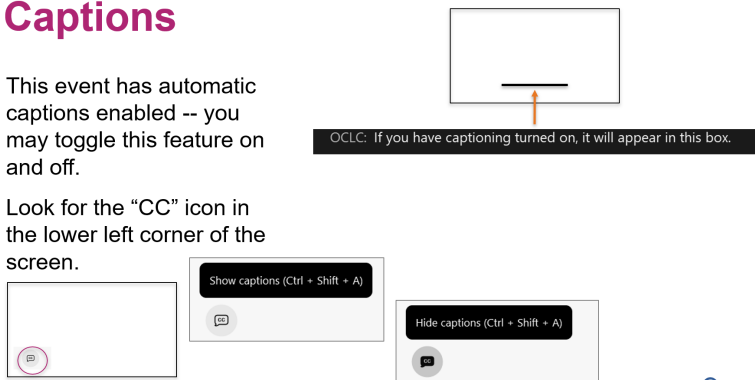
- **Vimeo livestream**
  - Please use the form on the livestream page to submit questions

# Housekeeping...

## Webex captions

### Captions

- This event has automatic captions enabled -- you may toggle this feature on and off.
- Look for the "CC" icon in the lower left corner of the screen.



## Livestream captions



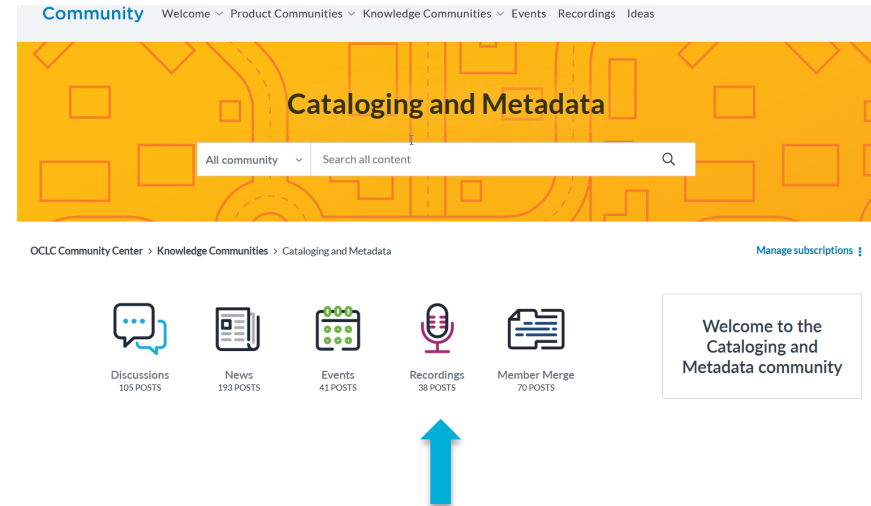
(Place the cursor over the screen)



# Post-event



- OCLC will make available:
  - Recordings of each session
  - Slides
  - Cited links list
- Notifications:
  - Registrants will receive an email after the event with instructions for how to access the content
  - OCLC will post content to:
    - Cataloging and Metadata [community](#)
    - [oclc.org/cataloging-and-metadata](https://oclc.org/communities/cataloging-and-metadata)



# OCCLC cataloging community meeting

## Metadata Panel: Metadata Collaboration Across Cultural Heritage Institutions



**Cynthia Whitacre**

Senior Metadata Operations Manager, Metadata Engagement  
OCCLC

#OCCLCcataloging



# OCCLC cataloging community meeting



**Dr Adrian Plau**

Collections Information Lead –  
Access

**Wellcome Collection**



**Dr Katy Mair**

Collections Information Lead –  
Cataloguing

**Wellcome Collection**



# “Better health for all”

evolving descriptive practices at Wellcome

Katy Mair and Adrian Plau  
18 June 2025

Content advisory



# Presentation outline

- **Managing collections access**
- **Making our collection as accessible as possible**
- **Addressing the history of our collection**

## Wellcome Collection

- Part of Wellcome Trust, founded in 1936.
- Collections of Sir Henry Wellcome (1853-1936), pharmaceutical entrepreneur, philanthropist, medical history enthusiast, colonialist.

*Portrait of Henry Wellcome dressed in costume as a warrior, wearing a headdress.*



# Managing collections access:

Inclusively, equitably, ethically and collaboratively

# Importance of staff wellbeing

**Wellcome recognises the potential risk of harm to staff wellbeing from discussion or viewing sensitive or distressing material. Prolonged exposure may also risk desensitisation.**

Aim for a 'seen once' approach so far as is practicable

Staff have a choice.  
You can say no

Use advisory statements in advance of any discussion / meeting

Reduce potential exposure to other staff during processing

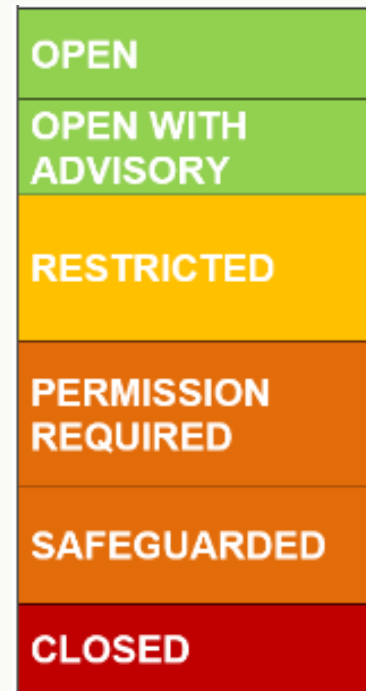
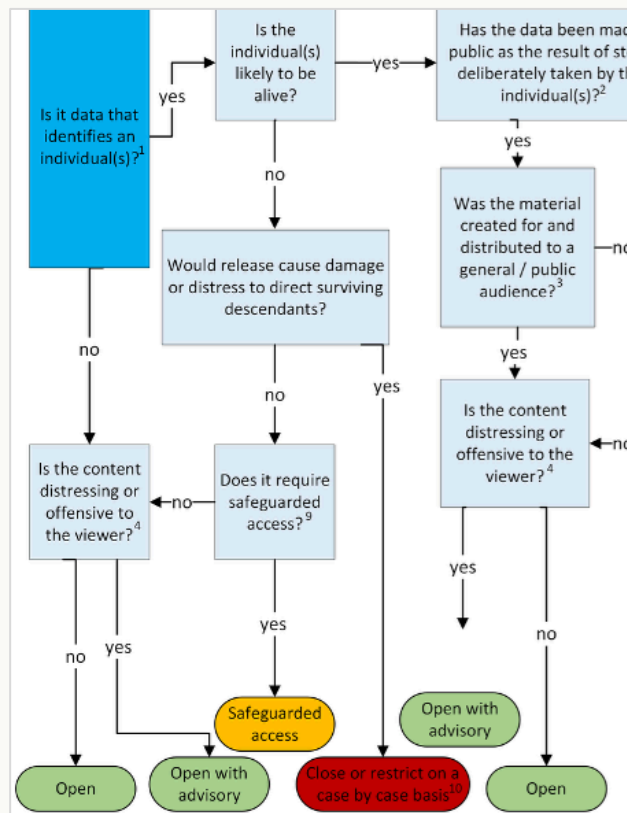
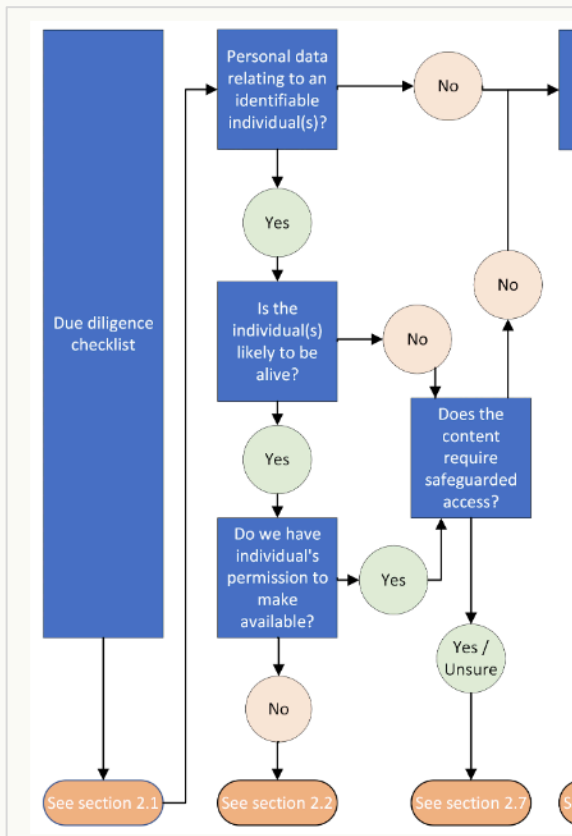
Ensure another member of staff is available for support

Limit the amount of time working on such material

Physical packaging and labelling

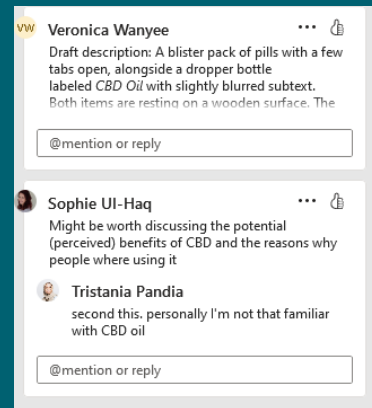
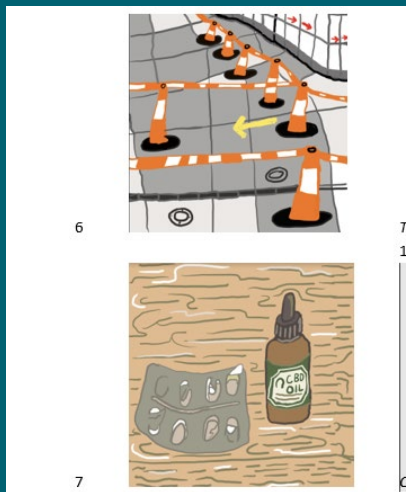
# Access to personal and sensitive information in our collections (2024)

17



# Mental health – Lived Experience Advisors collaboration

- Group cataloguing of Monique Jackson 'Still Ill: Corona Diary'



Make our collection as accessible to as many  
people as possible

# Access Advisory Panel

## Purpose & Role:

- Provide a formal mechanism for considering appeals regarding the access status of items in the collections held by Wellcome Collection
- Provide advice on appropriate access conditions for material held by Wellcome Collection, including acting as a sounding board for proposed new provisions
- Provide advice on the implementation of collections access review policy and procedures

## Membership

- Wellcome representatives from Collections & Digital, Legal, Information Governance
- Currently 2 x external standing members
- Co-opted representation from the depositor and additional external specialists, according to the appeal / matters in hand



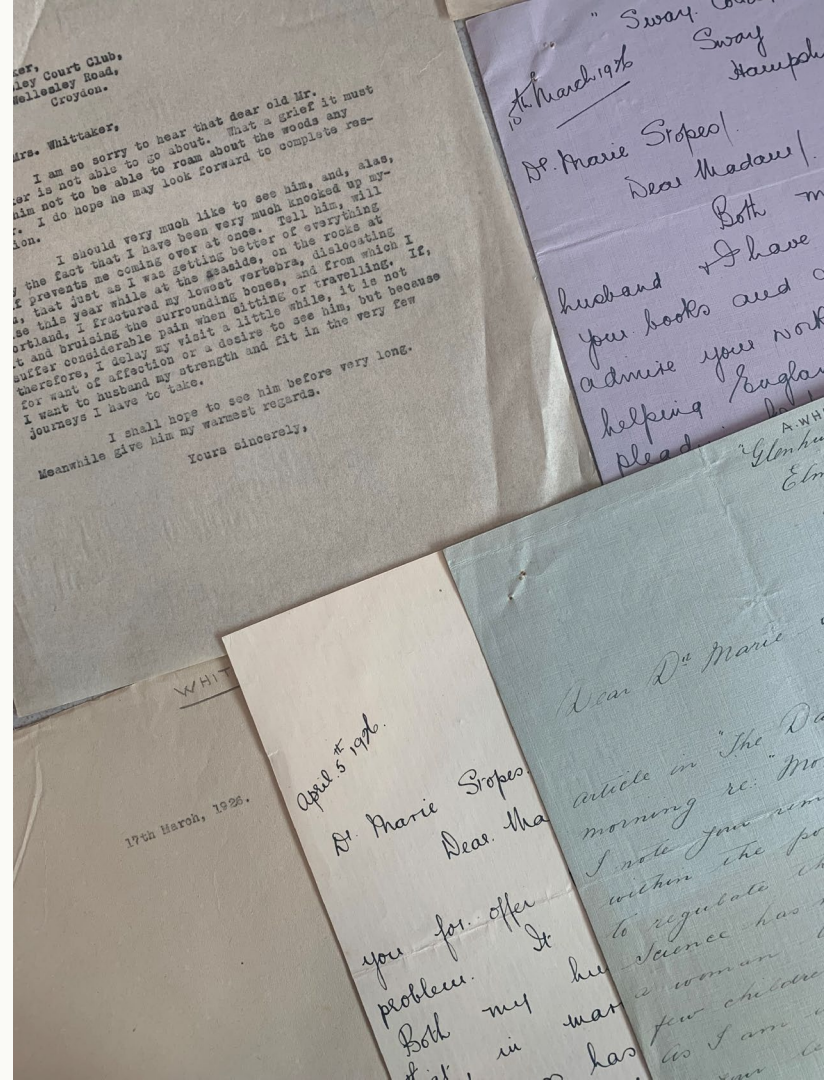
# January openings of our collections

- Parts of our catalogued collections are closed or restricted in line with UK General Data Protection Regulation (UK GDPR) or any other sensitivity reasons such as cultural or business sensitivity
- Documents are closed or restricted for a limited period and the restriction date is always until 01/01/XXXX
- Every January we assess documents due to be open and decide whether they require additional closure/restrictions, or can they be made open for research.



# Marie Stopes Married Love Sensitivity Review

- Section A 'M.L.' ( *Married Love* ) Letters, and other general correspondence of the Marie Stopes archive ([PP/MCS/A](#)).
- Due to lack of resources at the time of cataloguing, the whole of Section A was restricted.
- Contains a wide range of dates ( c. 1918-1950s) that meant most of the content's sensitivity may have expired.
- 325 files were reviewed between the team and we were able to open **70%** of these.





# Collections Enquiries

## Questions around:

- Access to uncatalogued archive materials
- Amendments to catalogue records
- Provenance details about an item or collection over and above what exists in an item's catalogue record
- Help in identifying key specific themes in an archive collection which are not clear from the catalogue
- Problems requesting items



Two men and a boy read from a book, one man holds a magnifying glass.  
Line engraving by N. Cavalli after D. Maggiotto. [Welcome Collection 16312i](#)

You have a painting titled,  
Taraka standing on a Dead  
Body. That's actually Kali.

## Tārā.

Reference: 26229i

[Pictures](#) [Online](#)

<https://wellcomecollection.org/works/qh xv2ypg>

### About this work

#### Also known as

Previous title, replaced March 2025: Taraka standing on a dead body. Coloured lithograph.

#### Description

The goddess Tārā standing on Shiva's body.

#### Publication/Creation

Calcutta (185 Bowbazar Street) : Calcutta Art Studio

#### Physical description

1 print : lithograph, with watercolour ; border 19.7 x 16.3 cm

#### Lettering

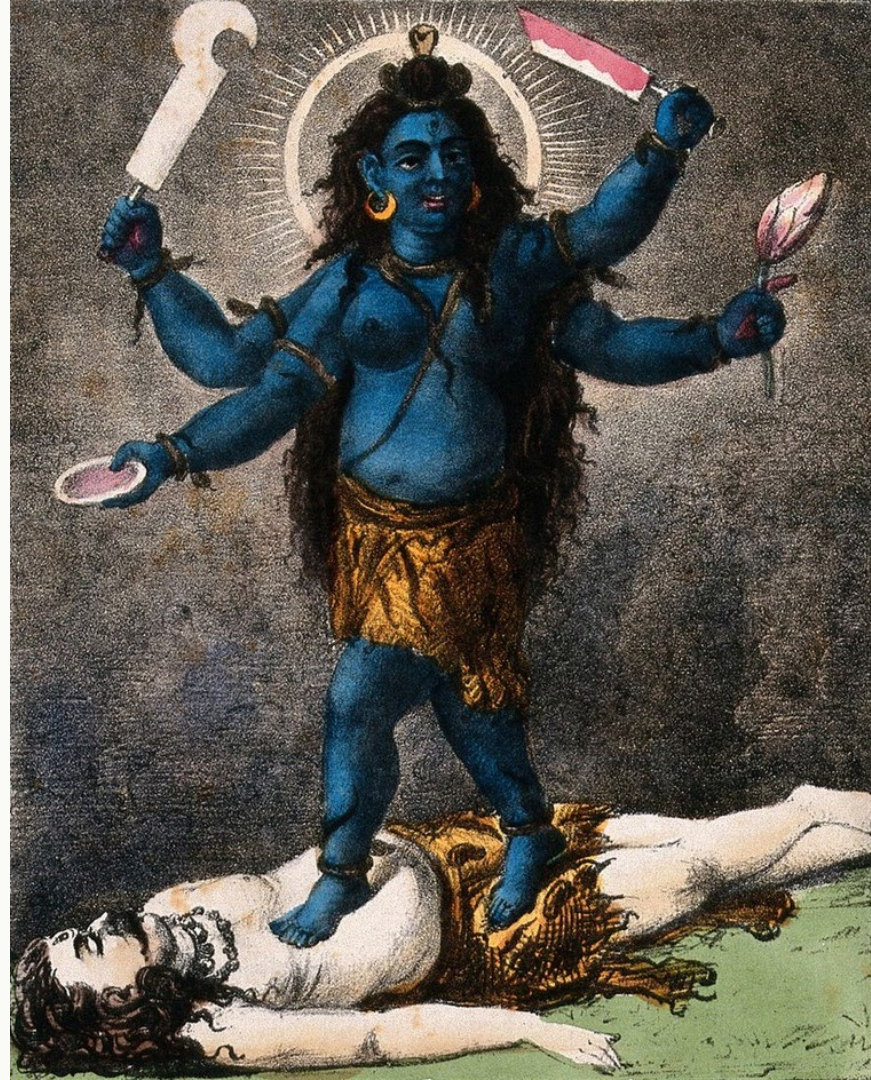
Tárā. Copyright reserved. Lettering in Devanagari and Bengali script

#### Notes

The title has been taken from wording on the object.

#### Reference

Wellcome Collection 26229i



Work systematically to address the  
history of our collection



# Transcribe Wellcome

**131,000 Library accession records**

**333,000 museum accession records**

**28,000 Visual Material items**

**159 Museums and Libraries identified**

**26 auction houses**



Left: M0004530, "Accessions room"

Library accessions registers



# Provenance

Macbeth and Banquo meet the three witches on a heath. Painting after J.H. J.H. Füssli (Fuseli). 40971i.

PERTH  
MUSEUM

SUPP

Inside the Museum

The Stone Of Destiny

Plan Your Visit

Learn

About

SOMETHING WICKED THIS WAY COMES; NEW  
MACBETH EXHIBITION TO OPEN IN APRIL

Monday 10th February 2025

MACBETH

AN EXHIBITION



6519-6525	Pur.	Prouté (S) October 1928	
6526-6542	Pur.	Prouté, 28.10.28.	3. 10. 0.
6543-6550	Pur.	Seine stalls, October 1928 (Together with Prouté 6519-6525)	6. 7. 6.

# Upcoming work

28

- **Obscene publications**
- **Human remains**
- **Content advisories**



Thank you!

# OCCLC cataloging community meeting



**Dr Robert Sanderson**

Senior Director for Digital Cultural  
Heritage  
**Yale University**



**Timothy Thompson**

Manager, Metadata Services Unit  
**Yale University**

*robert.  
sanderson  
@yale.edu*

*timothy.  
thompson  
@yale.edu*

Yale

# E Pluribus Unum: Aligning Metadata Across Libraries, Archives and Museums at Yale

<https://lux.collections.yale.edu/>

Robert Sanderson

Senior Director for  
Digital Cultural Heritage

Timothy Thompson

Manager, Metadata Services Unit

# LUX

A ground-breaking discovery  
and research platform,  
providing **unified** digital  
access to the **collections** of  
our museums, libraries and  
archives



17,402,818  
**Objects**



5,573,142  
**People & Groups**



571,647  
**Places**



4,630,803  
**Concepts**



155,578  
**Events**



13,349,881  
**Works**

# Cultural & Natural History Collections



Yale Peabody Museum



Yale University Art Gallery



Yale Center for British Art



Yale University Library



# Cultural & Natural History Collections



Yale Peabody Museum



Yale University Art Gallery



Yale Center for British Art



Yale University Library

# Cultural & Natural History Collections



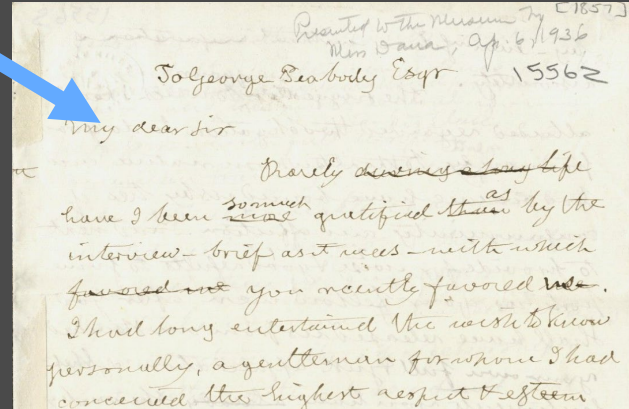
Yale Peabody Museum



Yale University Art Gallery



Yale Center for British Art



Yale University Library



# Cultural & Natural History Collections



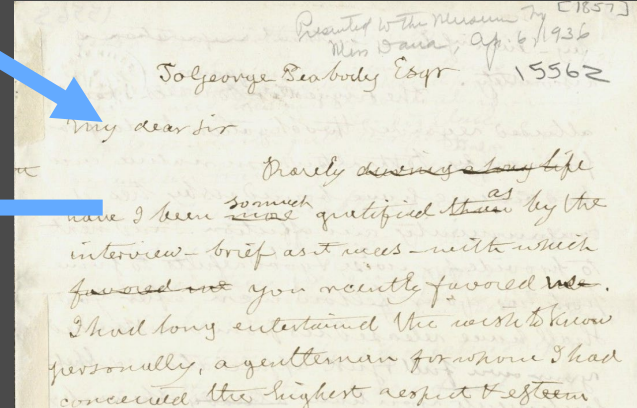
Yale Peabody Museum



Yale Center for British Art



Yale University Art Gallery



Yale University Library



# Cultural & Natural History Collections



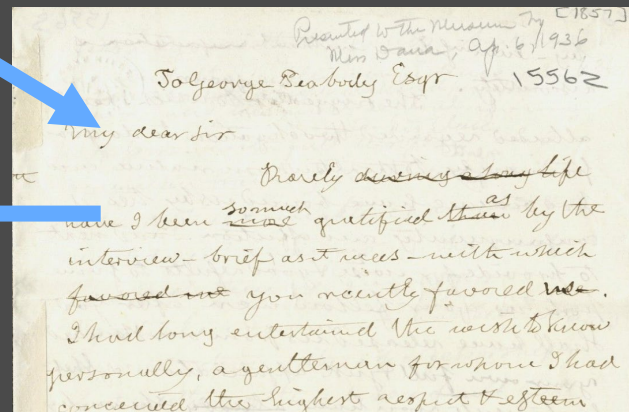
Yale Peabody Museum



Yale Center for British Art



Yale University Art Gallery



Yale University Library

*robert.  
sanderson  
@yale.edu*

*timothy.  
thompson  
@yale.edu*

# Cataloging Connections?

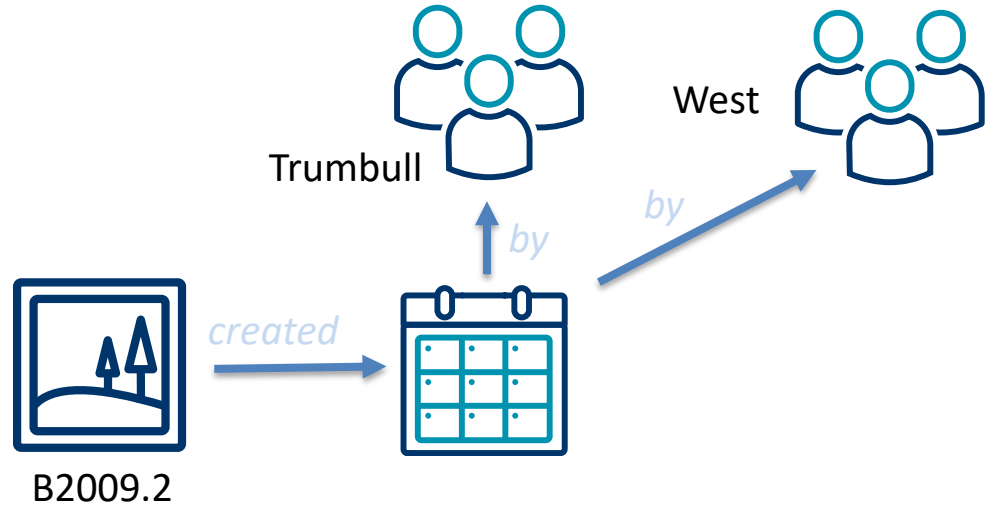


# Single Entity

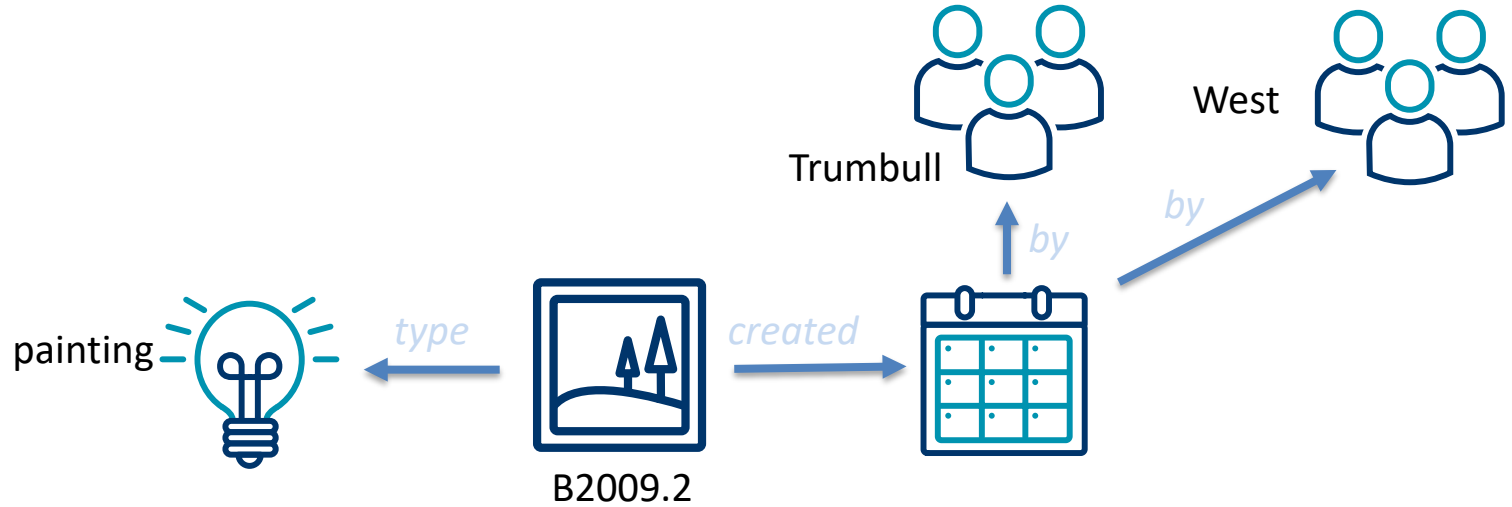


B2009.2

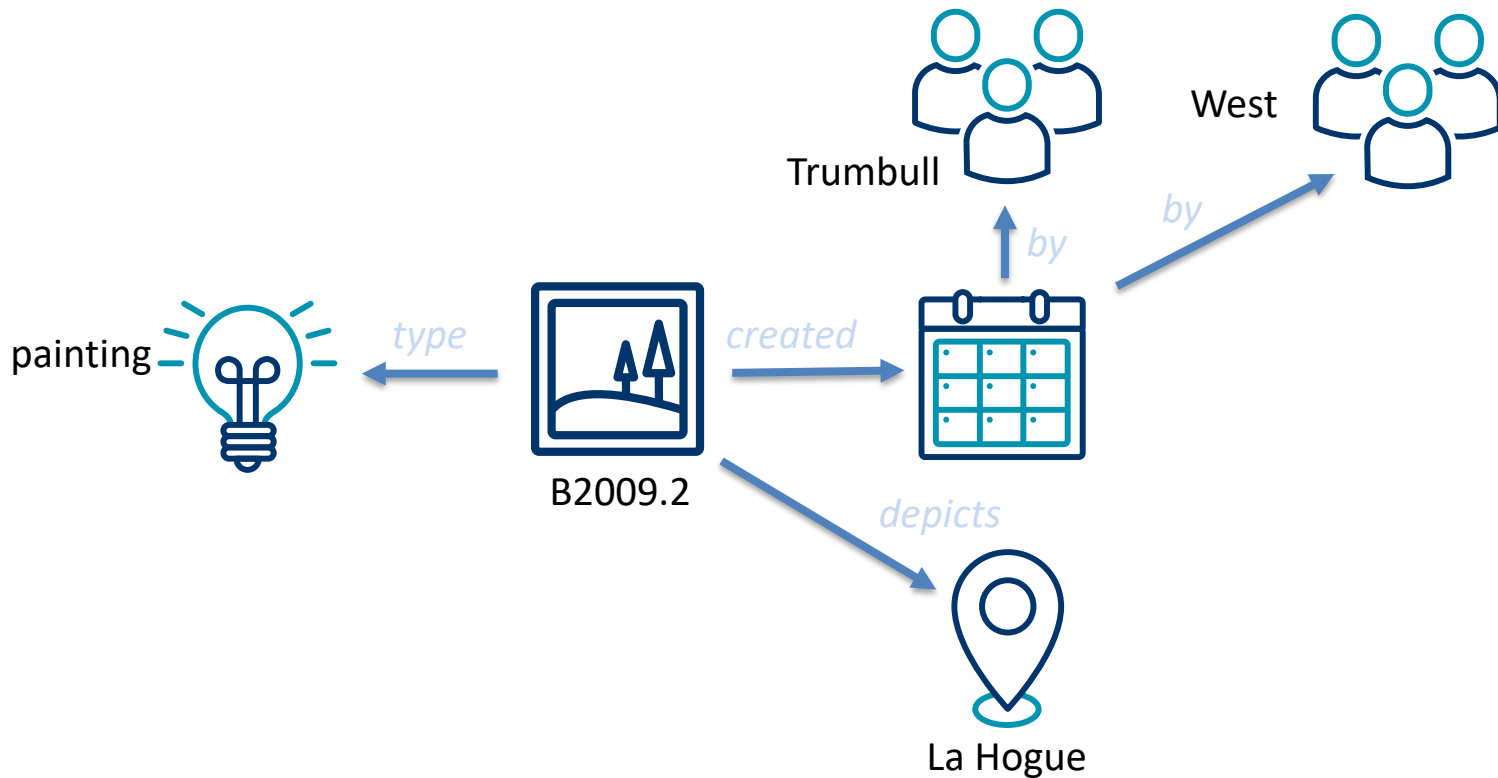
# References to other Entities



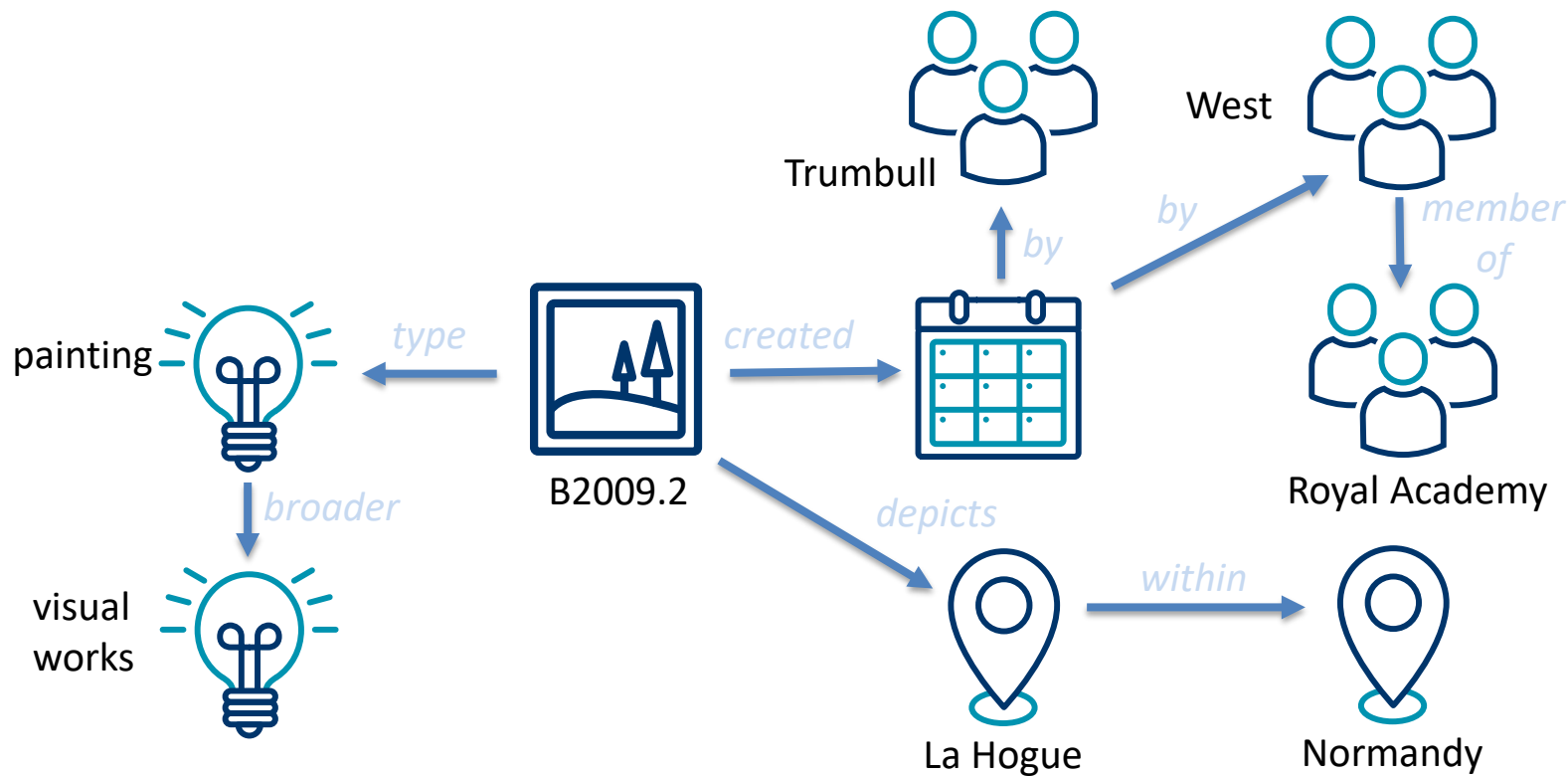
# Entities can be Conceptual



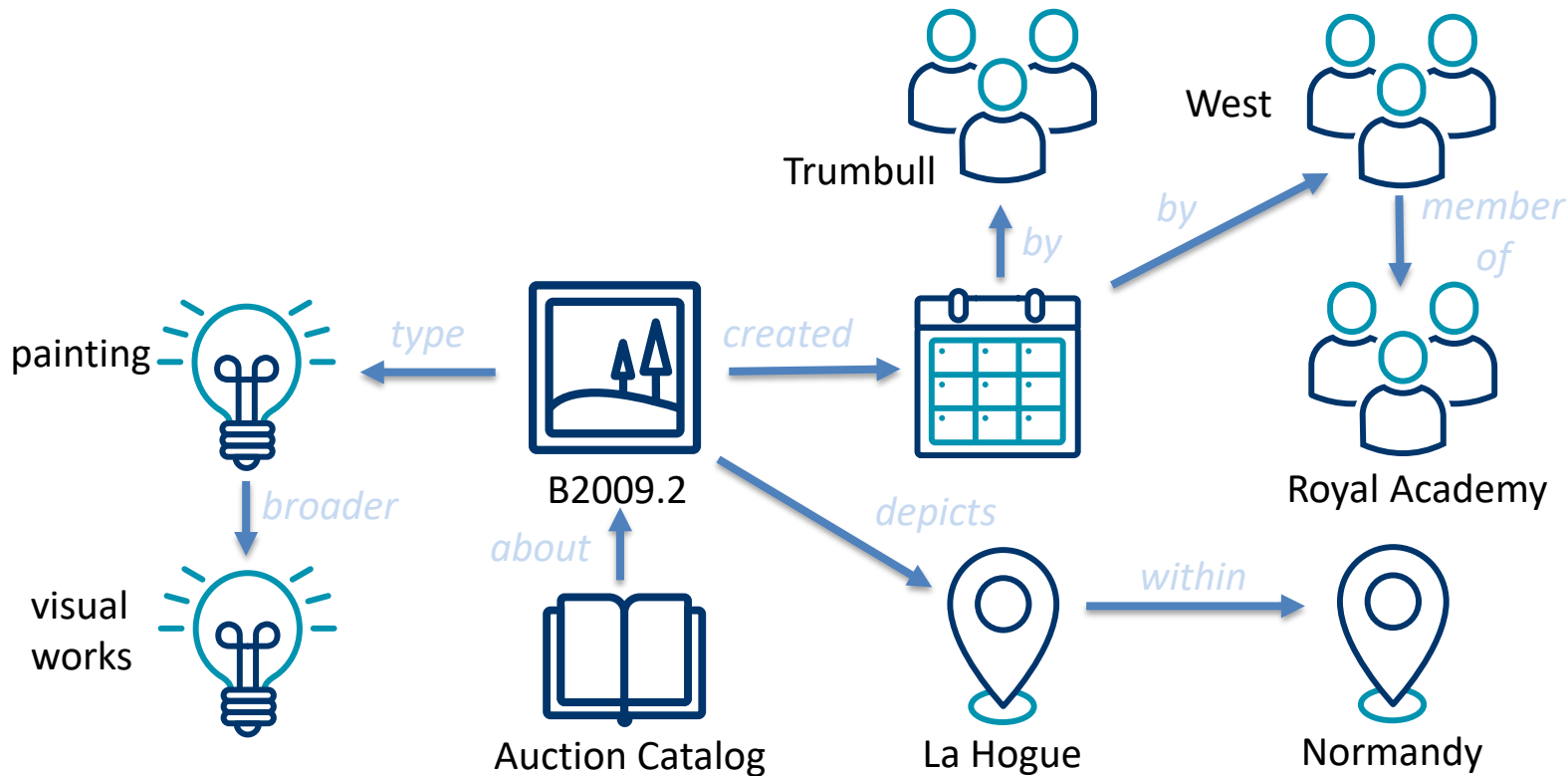
# And Geospatial



# With Hierarchical Relationships

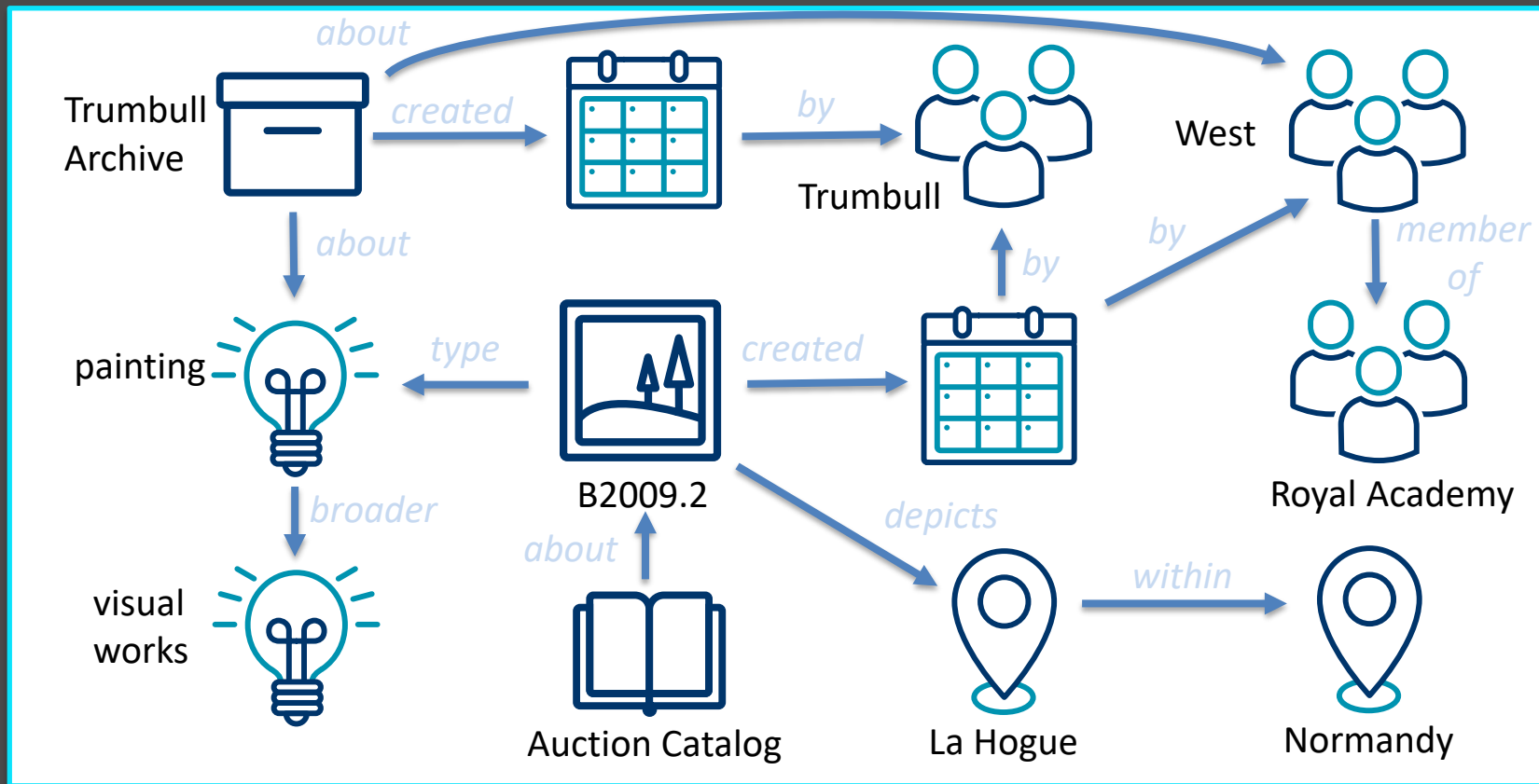


# And Non-Hierarchical





# Knowledge Graph!



# Scope of LUX

Yale's Collections include:

- Paintings & Sculptures
- Books & Manuscripts
  - ... on all subjects
- Maps & Globes
- Letters & Ephemera
- Fossils
- Animal & Plant Specimens
- Meteorites
- Furniture
- Kits
- Audio & Video
- ... and beyond
- ... from all around the world
- ... spanning millennia

## Scope of LUX

# Everything

*robert.  
sanderson  
@yale.edu*

*timothy.  
thompson  
@yale.edu*

Yale

# ~~Cataloging Books~~ Describing the World

# Unified?

The record should link to the records of all other entities that are related to this entity (**connected**)

## Benjamin West, 1738-1820

Objects Created,  
Encountered, or Influenced  
By

Works Created, Published, or  
Influenced By

Works About



### Study

**Produced By** Benjamin West

**Categorized As** visual works, Sketchbooks

**Collection** Prints and Drawings Collection, Yale Center for British Art

**Identifiers** B1977.14.4079(6)...



### Study

**Produced By** Benjamin West

**Categorized As** visual works, Sketchbooks

**Collection** Prints and Drawings Collection, Yale Center for British Art

**Identifiers** B1977.14.4079(9)...



### Study

**Produced By** Benjamin West

**Categorized As** visual works, Sketchbooks

**Collection** Prints and Drawings Collection, Yale Center for British Art

**Identifiers** B1977.14.4079(8)...



### Study

**Produced By** Benjamin West

**Categorized As** visual works, Sketchbooks

**Collection** Prints and Drawings Collection, Yale Center for British Art

**Identifiers** B1977.14.4079(5)...



?

### Name

Benjamin West <sup>(English)</sup>

本杰明·麦斯特 <sup>(Chinese)</sup>

בֶּנְיָמִין וֵסְט <sup>(Hebrew)</sup>

ベンジャミン・ウエスト <sup>(Japanese)</sup>

بنجامين ويست <sup>(Arabic)</sup>

[Show All](#)

### Additional Names

West, Benjamin <sup>(Dutch)</sup>

Benjamin West (1738-1820) <sup>(French)</sup>

Benjamin West R. A.

Benjamin West P. R. A.

West Benjamin, 1738-1820

## Data Sources

This information has been automatically generated from the sources below, and may be inaccurate. Please [report any issues here](#)

### This Record

<https://lux.collections.yale.edu/data/person/47b19957-36a4-4ed1-b4a9-c74067b30ee1>

### Yale Contributing Records

<https://linked-art.library.yale.edu/node/e39993f8-0e83-407c-b74e-ee7d133a9306>

<https://linked-art.library.yale.edu/node/eb8534cc-a444-4395-b18d-8e8513611c9a>

<https://linked-art.library.yale.edu/node/fc4cd50e-ec10-4c32-8a14-3f21326dc8a8>

<https://media.art.yale.edu/content/lux/agt/2270.json>

<https://ycba-lux.s3.amazonaws.com/v3/person/66/66e02f50-6276-4fa7-8843-02bb353f495b.json>

### External Contributing Records

<https://d-nb.info/gnd/118806823>

<https://data.bnf.fr/ark:/12148/cb149582521>

<https://datos.bne.es/resource/XX1262458>

<http://id.loc.gov/authorities/names/n50003451>

<http://id.loc.gov/authorities/names/hr90007215>

<http://viaf.org/viaf/76585232>

<http://viaf.org/viaf/9693700>

<http://vocab.getty.edu/ulan/500026989>

<http://www.wikidata.org/entity/Q313498>

# Unified?

The record should have as much knowledge presented as we can collect (**enriched**)

## Benjamin West, 1738-1820



Objects Created,  
Encountered, or Influenced  
By

Works Created, Published, or  
Influenced By

Works About



### Study

**Produced By** Benjamin West

**Categorized As** visual works, Sketchbooks

**Collection** Prints and Drawings Collection, Yale Center for British Art

**Identifiers** B1977.14.4079(6)...



### Study

**Produced By** Benjamin West

**Categorized As** visual works, Sketchbooks

**Collection** Prints and Drawings Collection, Yale Center for British Art

**Identifiers** B1977.14.4079(9)...



### Study

**Produced By** Benjamin West

**Categorized As** visual works, Sketchbooks

**Collection** Prints and Drawings Collection, Yale Center for British Art

**Identifiers** B1977.14.4079(8)...



### Study

**Produced By** Benjamin West

**Categorized As** visual works, Sketchbooks

**Collection** Prints and Drawings Collection, Yale Center for British Art

**Identifiers** B1977.14.4079(5)...



### Name

Benjamin West <sup>(English)</sup>

本杰明·韦斯特 <sup>(Chinese)</sup>

בֶּנְיָמִין, וֵסְט <sup>(Hebrew)</sup>

ベンジャミン・ウェスト <sup>(Japanese)</sup>

بنجامين ويست <sup>(Arabic)</sup>

[Show All](#)

### Additional Names

West, Benjamin <sup>(Dutch)</sup>

Benjamin West (1738-1820) <sup>(French)</sup>

Benjamin West R. A.

Benjamin West P. R. A.

West Benjamin, 1738-1820

## Data Sources

This information has been automatically generated from the sources below, and may be inaccurate. Please [report any issues here](#)

### This Record

<https://lux.collections.yale.edu/data/person/47b19957-36a4-4ed1-b4a9-c74067b30ee1>

### Yale Contributing Records

<https://linked-art.library.yale.edu/node/e39993f8-0e83-407c-b74e-ee7d133a9306>

<https://linked-art.library.yale.edu/node/eb8534cc-a444-4395-b18d-8e8513611c9a>

<https://linked-art.library.yale.edu/node/fc4cd50e-ec10-4c32-8a14-3f21326dc8a8>

<https://media.art.yale.edu/content/lux/agt/2270.json>

<https://ycba-lux.s3.amazonaws.com/v3/person/66/66e02f50-6276-4fa7-8843-02bb353f495b.json>

### External Contributing Records

<https://d-nb.info/gnd/118806823>

<https://data.bnf.fr/ark:/12148/cb149582521>

<https://datos.bne.es/resource/XX1262458>

<http://id.loc.gov/authorities/names/n50003451>

<http://id.loc.gov/authorities/names/hr90007215>

<http://viaf.org/viaf/76585232>

<http://viaf.org/viaf/9693700>

<http://vocab.getty.edu/ulan/500026989>

<http://www.wikidata.org/entity/Q313498>

# Unified?

There should be one record for each entity,  
not one per source database (**reconciled**)

## Benjamin West, 1738-1820



Objects Created,  
Encountered, or Influenced  
By

Works Created, Published, or  
Influenced By

Works About



### Study

**Produced By** Benjamin West

**Categorized As** visual works, Sketchbooks

**Collection** Prints and Drawings Collection, Yale Center for British Art

**Identifiers** B1977.14.4079(6)...



### Study

**Produced By** Benjamin West

**Categorized As** visual works, Sketchbooks

**Collection** Prints and Drawings Collection, Yale Center for British Art

**Identifiers** B1977.14.4079(9)...



### Study

**Produced By** Benjamin West

**Categorized As** visual works, Sketchbooks

**Collection** Prints and Drawings Collection, Yale Center for British Art

**Identifiers** B1977.14.4079(8)...



### Study

**Produced By** Benjamin West

**Categorized As** visual works, Sketchbooks

**Collection** Prints and Drawings Collection, Yale Center for British Art

**Identifiers** B1977.14.4079(5)...



### Name

Benjamin West <sup>(English)</sup>

本杰明·麦斯特 <sup>(Chinese)</sup>

בֶּנְיָמִין וֵסֵט <sup>(Hebrew)</sup>

ベンジャミン・ウエスト <sup>(Japanese)</sup>

بنجامين ويست <sup>(Arabic)</sup>

[Show All](#)

### Additional Names

West, Benjamin <sup>(Dutch)</sup>

Benjamin West (1738-1820) <sup>(French)</sup>

Benjamin West R. A.

Benjamin West P. R. A.

West Benjamin, 1738-1820

## Data Sources

This information has been automatically generated from the sources below, and may be inaccurate. Please [report any issues here](#)

### This Record

<https://lux.collections.yale.edu/data/person/47b19957-36a4-4ed1-b4a9-c74067b30ee1>

### Yale Contributing Records

<https://linked-art.library.yale.edu/node/e39993f8-0e83-407c-b74e-ee7d133a9306>

<https://linked-art.library.yale.edu/node/eb8534cc-a444-4395-b18d-8e8513611c9a>

<https://linked-art.library.yale.edu/node/fc4cd50e-ec10-4c32-8a14-3f21326dc8a8>

<https://media.art.yale.edu/content/lux/agt/2270.json>

<https://ycba-lux.s3.amazonaws.com/v3/person/66/66e02f50-6276-4fa7-8843-02bb353f495b.json>

### External Contributing Records

<https://d-nb.info/gnd/118806823>

<https://data.bnf.fr/ark:/12148/cb149582521>

<https://datos.bne.es/resource/XX1262458>

<http://id.loc.gov/authorities/names/n50003451>

<http://id.loc.gov/authorities/names/hr90007215>

<http://viaf.org/viaf/76585232>

<http://viaf.org/viaf/9693700>

<http://vocab.getty.edu/ulan/500026989>

<http://www.wikidata.org/entity/Q313498>

*robert.  
sanderson  
@yale.edu*

*timothy.  
thompson  
@yale.edu*

# Impossible?



*robert.  
sanderson  
@yale.edu*

*timothy.  
thompson  
@yale.edu*

Yale

## Explore Yale Collections

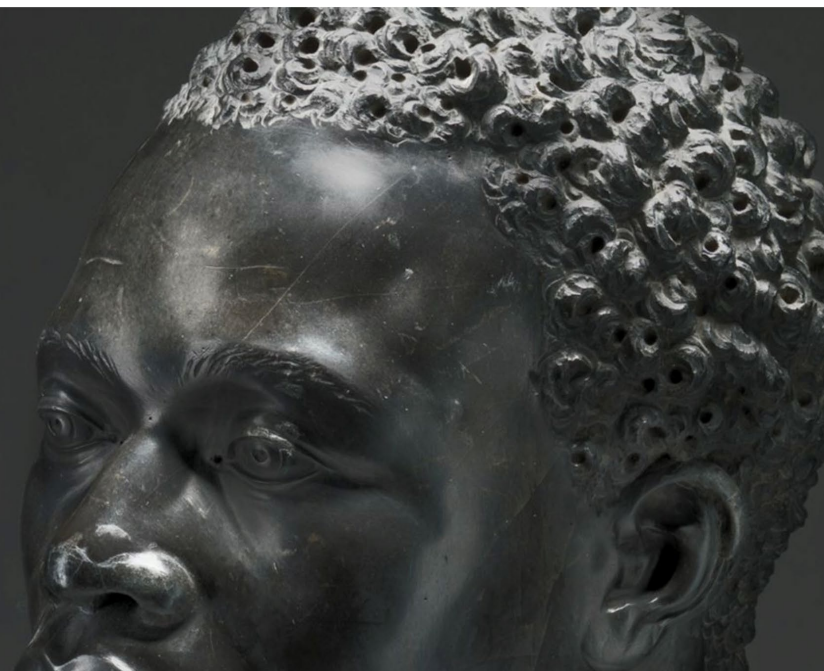


[Advanced Search](#) ▶

[Search Tips](#)

### What Is LUX?

Find and connect with the cultural heritage collections across Yale's museums, archives, and libraries in new ways and all in one place.



trumbull



[Switch to Advanced Search](#)

**Objects**  
3233 results



**Works**  
3701 results



**Collections**  
278 results



**People & Groups**  
277 results



**Places**  
150 results



**Concepts**  
89 results



**Events**  
8 results



3233 Objects results [Learn more about Objects and Works](#)

Records representing all physical or digital objects that match your search.

[Grid View](#)

Sort By ▾

desc ▾

Has Digital Image ▾

Is Online ▾

Object Class ▾

Categorized As ▾

Materials ▾

Encountered By ▾

Encountered At ▾

Encounter Date ▾

Created By ▾

Created At ▾

Creation Date ▾



### Sarah Hope Harvey Trumbull (1774–1824)

**Produced By** John Trumbull, in 1816–24

**Categorized As** Painting, visual works, Portraits

**Collection** American Paintings and Sculpture Collection, Yale University Art Gallery

**Identifiers** 1838.1...



### Governor Jonathan Trumbull, Sr., and Faith Robinson Trumbull (1710–1785, LL.D. 1779; 1718–1780)

**Produced By** John Trumbull, in 1783

**Categorized As** Painting, visual works, Portraits

**Collection** American Paintings and Sculpture Collection, Yale University Art Gallery

**Identifiers** 1958.51...



### Jonathan Trumbull, Jr., Eunice Backus Trumbull, and Faith Trumbull (later Faith Trumbull Wadsworth) (1740–1809, LL.D. 1797; 1749–1826; 1769–1846)

**Produced By** John Trumbull, in 1777

**Categorized As** Painting, visual works, Portraits

**Collection** American Paintings and Sculpture Collection, Yale University Art Gallery

**Identifiers** 1920.2...



### The Declaration of Independence, July 4, 1776

**Produced By** John Trumbull,

trumbull



[Switch to Advanced Search](#)

**Objects**  
10 results



**Works**  
3701 results



**Collections**  
278 results



**People & Groups**  
277 results



**Places**  
150 results



**Concepts**  
89 results



**Events**  
8 results



10 Objects results [Learn more about Objects and Works](#)

Records representing all physical or digital objects that match your search.

[Grid View](#)

Sort By ▾

desc ▾

**Selected Filters**

[Clear All](#)

Has Digital Image × Painting ×

Created in 1/1/1770 to 1/1/1780 ×

Has Digital Image ▾

Is Online ▾

Object Class ▾

Categorized As ▾

**Materials** ▴

☐ oil paint(10)

☐ canvas(10)

☐ Wood(1)

Created By ▾



**Jonathan Trumbull, Jr., Eunice Backus Trumbull, and Faith Trumbull (later Faith Trumbull Wadsworth) (1740–1809, LL.D. 1797; 1749–1826; 1769–1846)**

**Produced By** John Trumbull, in 1777

**Categorized As** Painting, visual works, Portraits

**Collection** American Paintings and Sculpture Collection, Yale University Art Gallery

**Identifiers** 1920.2...



**Jabez Huntington, Jr. (Nephew of the artist) (1767-1848), B.A. 1784**

**Produced By** John Trumbull, in 1777

**Categorized As** Painting, visual works, Portraits

**Collection** American Paintings and Sculpture Collection, Yale University Art Gallery

**Identifiers** 1938.272...



**Governor Jonathan Trumbull, Sr. (1710-1785), LL.D. 1779**

**Produced By** John Trumbull, in 1774–75

**Categorized As** Painting, visual works, Portraits

**Collection** American Paintings and Sculpture Collection, Yale University Art Gallery

**Identifiers** 1797.1...



**Brutus and His Friends at the Death of Lucretia**

**Produced By** John Trumbull, in 1777

**Categorized As** Painting, visual works, histories, human figures, Interior decoration

**Collection** American Paintings and Sculpture Collection, Yale University Art Gallery

# The Battle of La Hogue

Benjamin West, 1738-1820, American



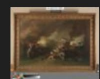
## CONTENTS



recto, cropped to im



recto, unframed



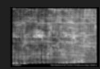
recto, framed



verso, framed



verso, unframed



x-radiograph



infrared reflectogr

## Benjamin West, 1738-1820, The Battle of La Hogue, 1778, retouched 1806

recto, cropped to image



### ATTRIBUTION

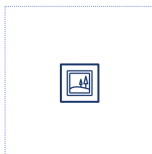
Metadata describing Yale Center for British Art collections is public domain under CC0. Copyright or other restrictions may apply to cultural works or images of those works in this record.

MORE INFORMATION

This object includes the following works

How do I see it?

This object includes the following works



## "The Battle of La Hogue" - Visual Content

**Creator** [Benjamin West](#),

**Categorized As** [militia pieces](#), [seascapes](#)

## About

<b>Exhibition Titles</b>	The destruction of the French fleet at La Hogue, 1692 [1780, Royal Academy of Arts, London, exhibition catalogue]	
<b>Object Class</b>	Physical Object	
<b>Identifiers</b>	<b>Accession Numbers</b>	B2009.2 <a href="#">Yale Center for British Art</a>
	<b>Record Identifiers</b>	61431 <a href="#">Yale Center for British Art</a>
<b>Categorized As</b>	<a href="#">Painting</a> <a href="#">visual works</a>	
<b>Materials</b>	<a href="#">oil paint</a> <a href="#">canvas</a>	
<b>Creation</b>	<b>Artists</b>	<a href="#">Benjamin West</a>
	<b>Additional When</b>	<a href="#">John Trumbull</a> 1778, retouched 1806
	<b>Technique</b>	<a href="#">Painting</a>
<b>Subject Of</b>	<a href="#">Benjamin West : a biography</a>	
	<a href="#">Benjamin West, American painter at the English Court : June 4-August 20, 1989</a>	

## How do I see it?

### Access ⓘ

Not on view

[View this record on the Yale Center for British Art website](#) ⓘ

### Collection

[Paintings and Sculpture Collection, Yale Center for British Art](#)

### Responsible Unit

[Yale Center for British Art](#)

[Plan Your Visit to the Yale Center for British Art](#)

## Can I re-use it?

Rights information may be available on the associated Works page.

For more information about Rights and Usage, visit the [LUX Frequently Asked Questions](#).

[Submit feedback about this record](#) ⓘ

## Data Sources

This information has been automatically generated from the sources below, and may be inaccurate. [Please report any issues here](#) ⓘ

### This Record

<https://lux.collections.yale.edu/data/object/ff1a4901-df28-45ee-b9cb-6977bb0a6cd7> ⓘ

### IIF Manifest

<https://manifests.collections.yale.edu/v2/ycba/obj/61431> ⓘ

### Yale Contributing Records

<https://ycba-lux.s3.amazonaws.com/v3/object/37/37efef97-8f79-41c0-9449-1c80c3655900.json> ⓘ





## John Trumbull, 1756-1843

Objects Created,  
Encountered, or  
Influenced By

Works Created,  
Published, or  
Influenced By

Works About

Collections  
Created By

Collections About



### List of Pigments

**Produced By** John Trumbull, in late 18th–early 19th century

**Categorized As** Drawing, visual works

**Collection** Prints and Drawings Collection, Yale University Art Gallery

**Identifiers** 1938.278...



### Bacherach - Sept. 1786

**Produced By** John Trumbull, in 1786

**Categorized As** Prints, visual works, Engraving

**Collection** Prints and Drawings Collection, Yale University Art Gallery

**Identifiers** 1938.298...



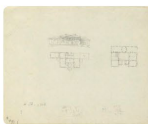
### Horses

**Produced By** John Trumbull, in ca. 1820

**Categorized As** Drawing, visual works

**Collection** Prints and Drawings Collection, Yale University Art Gallery

**Identifiers** 1938.289...



### Elevation and floor plan for large house

**Produced By** John Trumbull, in n.d.

**Categorized As** Drawing, visual works

**Collection** Prints and Drawings Collection, Yale University Art Gallery

**Identifiers** 1938.284...



### Reclining Nude, front view

**Produced By** John Trumbull, in late 18th–early 19th century

**Categorized As** Drawing, visual works



### Name

John Trumbull (English language)

約翰·特倫布 (Chinese language)

ジョン・トランブル (Japanese language)

جون ترميل (Arabic language)

जॉन ट्रंबुल (Hindi language)

[Show All](#)

### Sort Titles

Trumbull John (English language)

### Additional Names

Trumbull, John (English language)

John Trumbull (1756-1843) (French language)

Trumbull John, 1756-1843

John Trumbull, 1756-1843

after John Trumbull, 1756-1843

[Show All](#)

### Nonpreferred Terms

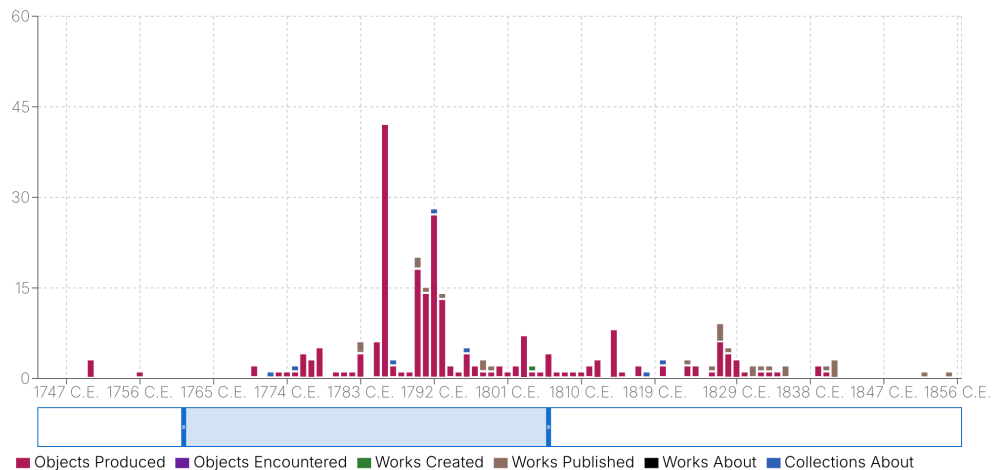
Col. Trumbull

# E Pluribus Unum Aligning LAM Metadata

robert.  
sanderson  
@yale.edu  
timothy.  
thompson  
@yale.edu

Yale

## Timeline of Related Objects/Works



Events Containing Objects Created By

Groups Founded

Concepts Influenced

Object Types

Related Materials

Person or Group Class  
Person

**Birth**

6/6/1756

**Birth Place**

[Lebanon](#)

**Death**

11/10/1843

**Death Place**

[New York](#)

**Nationality**

[American](#)

**Gender**

[male](#)

**Occupation/Role**

[Architects](#)

[Diplomats](#)

[painters](#)

[portraitists](#)

[miniature painters](#)

[Show All](#)

**Member Of**

[American Academy of Arts and Sciences](#)

**Professional Activities**

[in London](#)

[in New York](#)

[in Boston](#)

[in Connecticut](#)

**Web Pages**

[https://en.wikipedia.org/wiki/John\\_Trumbull](https://en.wikipedia.org/wiki/John_Trumbull)

**Display Biography**

American, 1756–1843

American painter, 1756–1843

**Descriptive Note**

American artist (1756–1843) [\(English language\)](#)

Comment on works: Portraits [\(English language\)](#)





# New York

World > North America > United States > New York > New York

Objects Made or  
Encountered At

Works Published At

Works About

Collections About



## Salt and Pepper Shakers

**Produced By** David Tisdale, Elika, in 1988

**Categorized As** Containers, three-dimensional, pepper shakers, saltshakers

**Collection** American Decorative Arts Collection, Yale University Art Gallery

**Identifiers** 2012.125.1.1-.2...



## Lady with Pink Roses

**Produced By** Grace Hamilton McIntyre, in ca. 1900

**Categorized As** Miniature painting, visual works, Portraits

**Collection** American Paintings and Sculpture Collection, Yale University Art Gallery

**Identifiers** 1991.79.3...



## Gold Kukara

**Produced By** Covington Fabrics Corporation, in 1952

**Categorized As** textiles, three-dimensional

**Collection** American Decorative Arts Collection, Yale University Art Gallery

**Identifiers** 1952.7.2...



## Sugar tongs

**Produced By** William Adams, in ca. 1840

**Categorized As** Cutlery, three-dimensional, sugar tongs

**Collection** American Decorative Arts Collection, Yale University Art Gallery

**Identifiers** 1985.85.169...



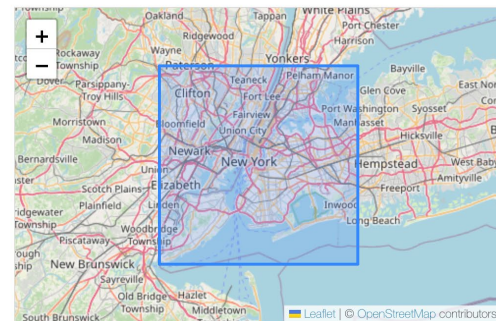
## Tablespoon

**Produced By** Andrew Underhill, in ca. 1775

**Categorized As** Cutlery, three-dimensional

**Collection** American Decorative Arts Collection, Yale University Art Gallery

**Identifiers** 1985.85.175...



## About New York

### Name

New York (English language)

New York City (English language)

New York Chhi (Chinese language)

ניו-יורק (Hebrew language)

Nova Iorque (Portuguese language)

[Show All](#)

### Nonpreferred Terms

City of New York (English language)

Big Apple (English language)

New Amsterdam (English language)

NY (English language)

Nieuw-Amsterdam (Dutch language)

[Show All](#)

### Additional Names

robert.  
sanderson  
@yale.edu

timothy.  
thompson  
@yale.edu

Yale

## Let AI help you explore Yale Collections

paintings of people who discovered fossils and are the su

Select the interpretation that best matches your search:

I want paintings that show people who discovered fossils and are the subject of archives <sup>100%</sup>

Advanced Search ▶

[Search Tips](#)

## What Is LUX?

Find and connect with the cultural heritage collections across Yale's museums, archives, and libraries in new ways and all in one place.



**Objects**  
9 results



**Works**  
- results



**Collections**  
- results



**People & Groups**  
- results



**Places**  
- results



**Concepts**  
- results



**Events**  
- results



Search for Objects that...

[Clear Search](#)

have All of ▾

the following

Categorized As ▾

concepts that

Name ▾

painting

And

Include Works ▾

About People & Groups ▾

have All of ▾

the following

Encountered ▾

And

Categorized As ▾

concepts that

Name ▾

fossils

Subject Of Collections ▾

Categorized As ▾

concepts that

Name ▾

archives

+ Add Row

## Help

Use Advanced Search options to specify and enter your search terms. Use Simple Search to create nested searches; these can be Boolean or phrase searches. Select Multiple Fields to enter more than one search criterion. Multiple Fields will prompt you to select a grouping (ALL, ANY, NONE). Use Single Field to select and search for a specific term. When using Multiple Fields add a Single Field when you are ready to enter search term(s) in a text box.

Learn more about LUX's advanced search capabilities and common search patterns.

[View Advanced Search Help](#)

Tell us how we're doing

## 9 Objects results [Learn more about Objects and Works](#)

Records representing all physical or digital objects that match your search.

Grid View

Sort By ▾

desc ▾

Has Digital Image ▾

Is Online ▾

Object Class ▾

Categorized As ▾

Materials ▾

Created By ▾

Created At ▾

Creation Date ▾

Responsible Unit ▾

Collection ▾



### Benjamin Silliman (1779-1864), BA 1796, MA 1799

**Produced By** Nathaniel Rogers, in ca. 1815

**Categorized As** Miniature painting, visual works, Portraits

**Collection** American Paintings and Sculpture Collection, Yale University Art Gallery

**Identifiers** 1954.34.1...



### James Dwight Dana (1813-1895) B.A. 1833, M.A. 1836, (after Daniel Huntington; see cat. no. 708)

**Produced By** Deane Keller, in 1964

**Categorized As** Painting, visual works, Portraits

**Collection** American Paintings and Sculpture Collection, Yale University Art Gallery

**Identifiers** 1970.99...



### James Dwight Dana (1813-1895), B.A. 1833, M.A. 1836

**Produced By** Daniel Huntington, in 1858

**Categorized As** Painting, visual works, Portraits

**Collection** American Paintings and Sculpture Collection, Yale University Art Gallery

**Identifiers** 1961.46...



### Benjamin Silliman (1779-1864), B.A. 1796, M.A. 1799

**Produced By** Nathaniel Jocelyn, in 1842

**Categorized As** Painting, visual works, Portraits

**Collection** American Paintings and Sculpture Collection, Yale University Art Gallery

**Identifiers** 1850.1...



### Henry Walcott Farnam (1853-1933), B.A. 1874, M.A. 1876, LL.D. 1923

**Produced By** Stephen Seymour Thomas, in 1913

**Categorized As** Painting, visual works, Portraits

**Collection** American Paintings and Sculpture Collection, Yale University Art Gallery

**Identifiers** 1913.689...



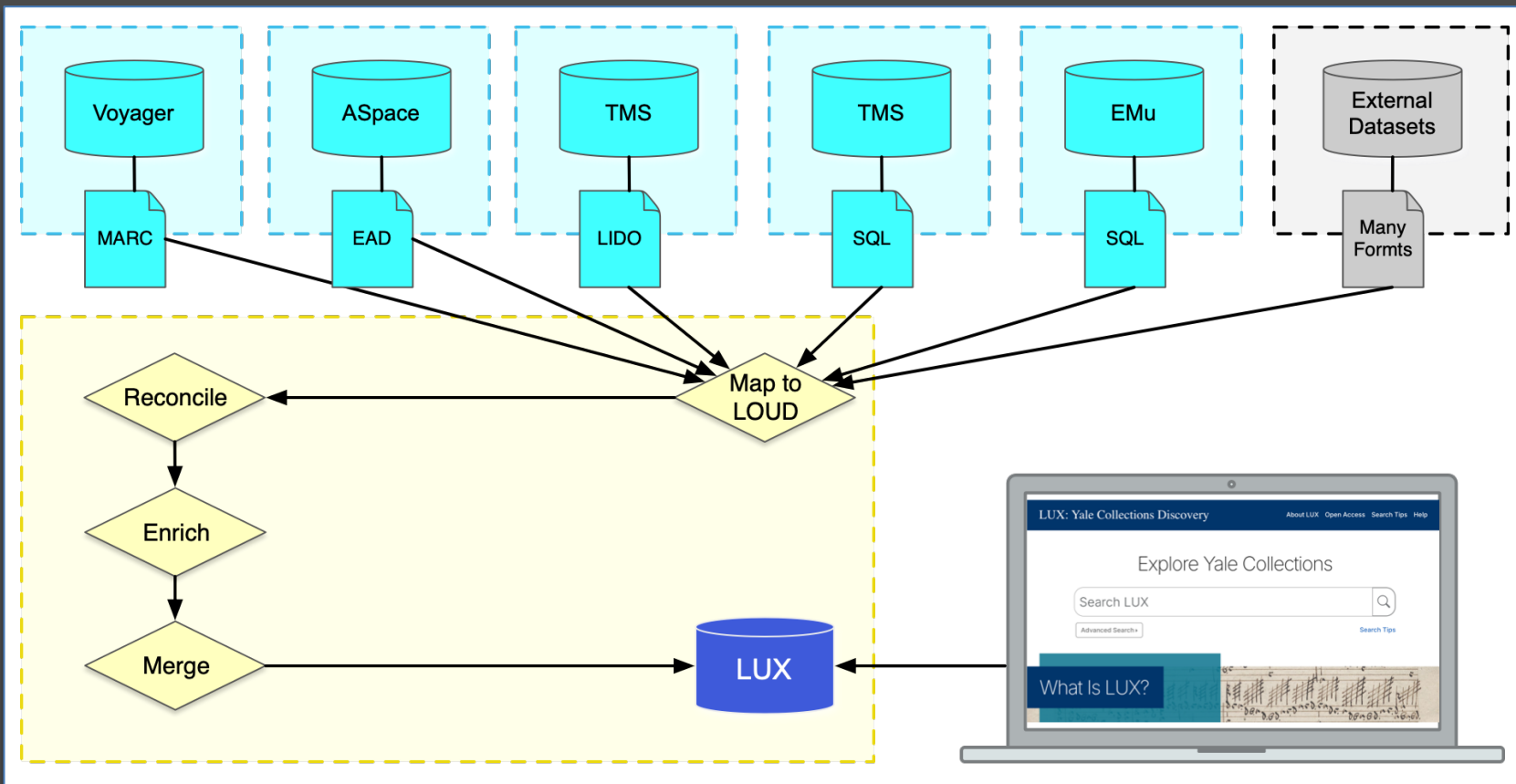
### Edward Salisbury Dana (1849-1935) BA 1870, MA 1874, PhD 1876

**Produced By** Mary Seymour Brooks, in 1950

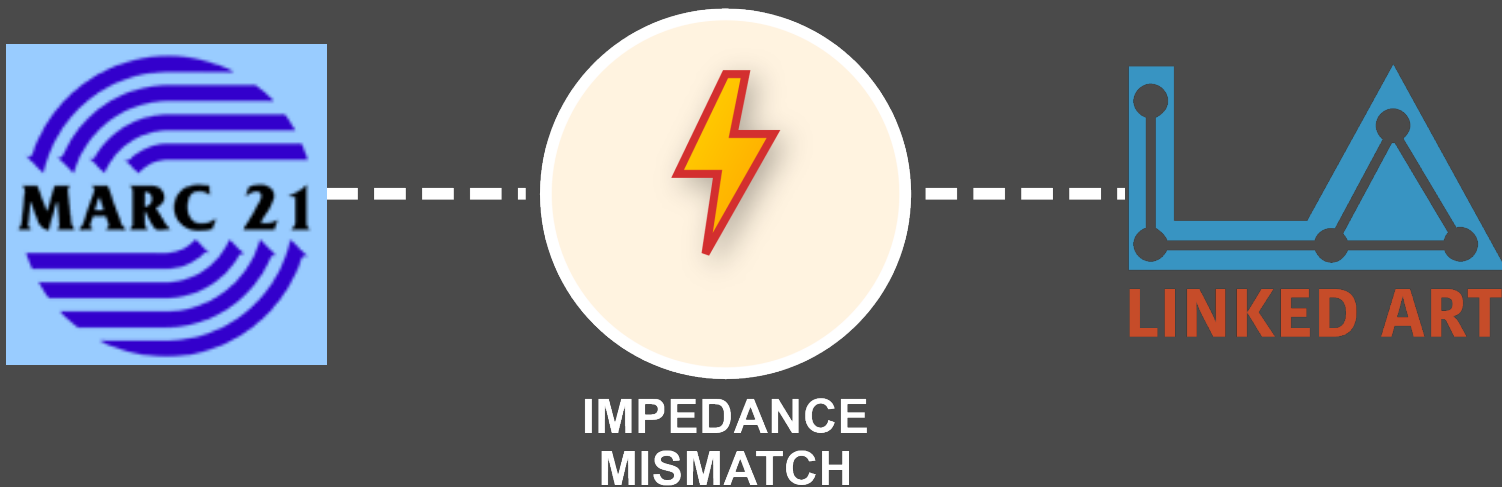
**Categorized As** Painting, visual works, Portraits

Tell us how we're doing

# No MARC or Catalogers Harmed!



# From MARC to Linked Art

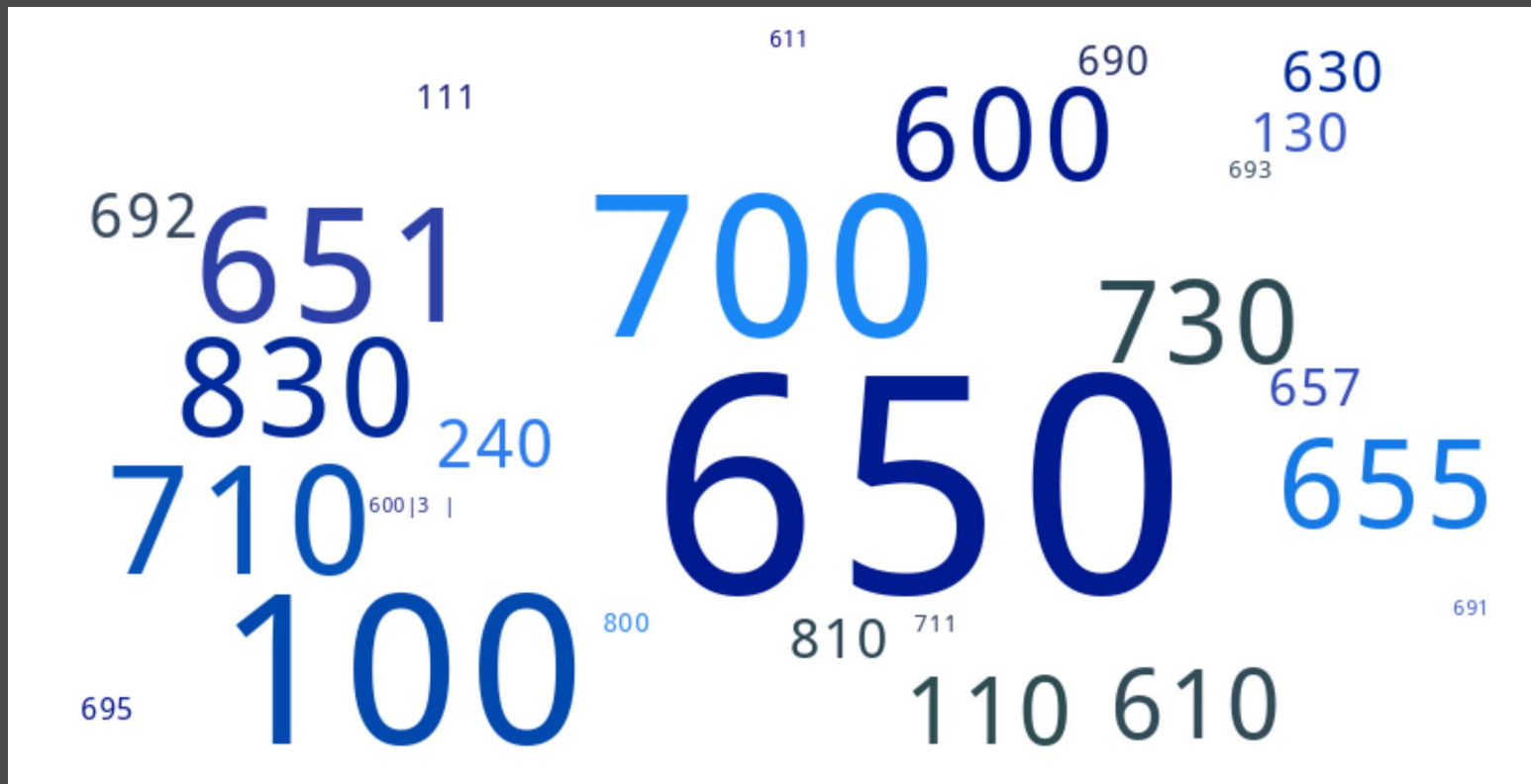


*The structural incompatibility (“semantic gap”) between two data models that are based on different paradigms ([Guidoni et al., 2020](#)).*

robert.  
sanderson  
@yale.edu  
timothy.  
thompson  
@yale.edu



From These...





## To This!

Linked Art Class	MARC Tags	Count
Activity	111, 611, 694, 711, 811	207,980
Group	100 3  , 110, 600 3  , 610, 693, 700 3  , 710, 810	7,099,659
LinguisticObject	130, 240, 630, 695, 730, 800, 810, 811, 830	7,177,725
Person	100, 600, 692, 700, 800	17,802,675
Place	651, 691, 751	4,295,824
Type	650, 655, 656, 657, 690	23,640,383

# Challenges

- Impedance mismatch
  - MARC was modeled on the card catalog.
  - Linked Art was modeled on the world (of cultural heritage).
- Complex logic is needed to map from records to entities.
- Thousands of data elements to map
- Nonstandard local fields
- Local cataloging conventions

# Solutions

- 133 modular mapping specifications
  - Top-level entities (objects, works, people, places, concepts)
  - Descriptive content (identifiers, names, notes, dates)
  - Data mappings, explanatory text, and step-by-step instructions
- Collaboration between metadata librarians and developers
- Data Working Group for continued refinement

# Pitfalls: Copy-Specific Metadata

MARC 21



The castle of Otranto, a Gothic story  
*by Horace Walpole*

## MARC 21



The castle of Otranto, a Gothic story  
*by Horace Walpole*

655 7 \$a Fore-edge paintings (Binding) \$2 rbbin

## MARC 21



The castle of Otranto, a Gothic story  
*by Horace Walpole*

655 7 \$a Fore-edge paintings (Binding) \$2 rbbin



Copy 1



Copy 2



Copy 3  
*extra-  
illustrated*



# E Pluribus Unum Aligning LAM Metadata

robert.  
sanderson  
@yale.edu

timothy.  
thompson  
@yale.edu

Yale



From the website [Horace Walpole at 300.](#)





# Record-Level Mappings

Based on mapping rules and data attributes in the bibliographic record...

- *The castle of Otranto* is both a book and a painting.
- It is both textual and visual.



Linked Art Class	Work (Content Type)	Object (Format)
LinguisticObject	Textual Works	Books
VisualItem	Visual Works	Paintings

# The castle of Otranto, a Gothic story

Horace Walpole, 1717-1797, British



Visual Work

This work is included in the following objects



## The castle of Otranto, a Gothic story

**Categorized As** [Painting](#), [Books](#)

**Collection** [Lewis Walpole Library](#), [Yale University Library](#)

**Identifiers** 24 17 782 Copy 1...



## The castle of Otranto, a Gothic story

**Categorized As** [Painting](#), [Books](#)

**Collection** [Lewis Walpole Library](#), [Yale University Library](#)

**Identifiers** 24 17 782 Copy 3...

# More Solutions!

- Remapping metadata from work to object in LUX
- Copy-specific recommendations for MARC
  - Moving data to the holdings record
  - New 655 MARC Holdings field (comments to: [marc@listserv.loc.gov](mailto:marc@listserv.loc.gov))

[The Library of Congress](#) >> [Especially for Librarians and Archivists](#) >> [Standards](#)



## MARC STANDARDS

[HOME](#) >> [MARC Development](#) >> [Proposals List](#)

### MARC PROPOSAL NO. 2025-04

**DATE:** May 22, 2025

**REVISED:**

**NAME:** Defining Field 655 (Index Term-Genre/Form) in the MARC 21 Holdings Format

**SOURCE:** Yale University; co-sponsored by the Bibliographic Standards Committee (BSC) of the Rare Books and Manuscripts Section (RBMS) of the Association of College and Research Libraries (ACRL), a division of ALA (American Library Association); and by the Cataloging Advisory Committee (CAC) of the Art Libraries Society of North America (ARLIS/NA)

**SUMMARY:** This paper proposes defining field 655 (Index Term-Genre/Form) in the MARC 21 Holdings Format.

**KEYWORDS:** Field 655 (HD); Index Term-Genre/Form (HD)

**RELATED:** [2025-DP03](#)

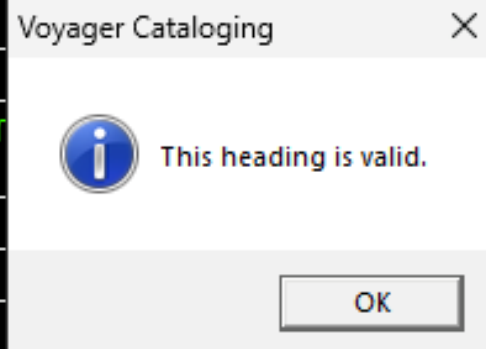
**STATUS/COMMENTS:**

05/22/25 – Made available to the MARC community for discussion.

# Pitfalls: Authority Control

This heading is valid?

	100	1		‡a Halleur, G. C. Hermann.
	245	1	4	‡a The art of photography ‡h [microform] : ‡b instructions in the art of producing ph Hermann Halleur ; with practical hints on the locale best suited for photographic op attitude, and dress, for portraiture by F. Schubert and an appendix ; translated from
	260			‡a London : ‡b J. Weale, ‡c 1854.
	300			‡a xii, 108 p. : ‡b ill., diagrs. ; ‡c 18 cm.
	533			‡a Microfilm. ‡b Woodbridge, CT. : ‡c Resear Reel 83, no. 882)
	650		0	‡a Photography.
→	700	1		‡a Schubert, Franz.
	700	1		‡a Strauss, G. L.
	830		0	‡a History of photography ; ‡v Reel 83, no. 882.

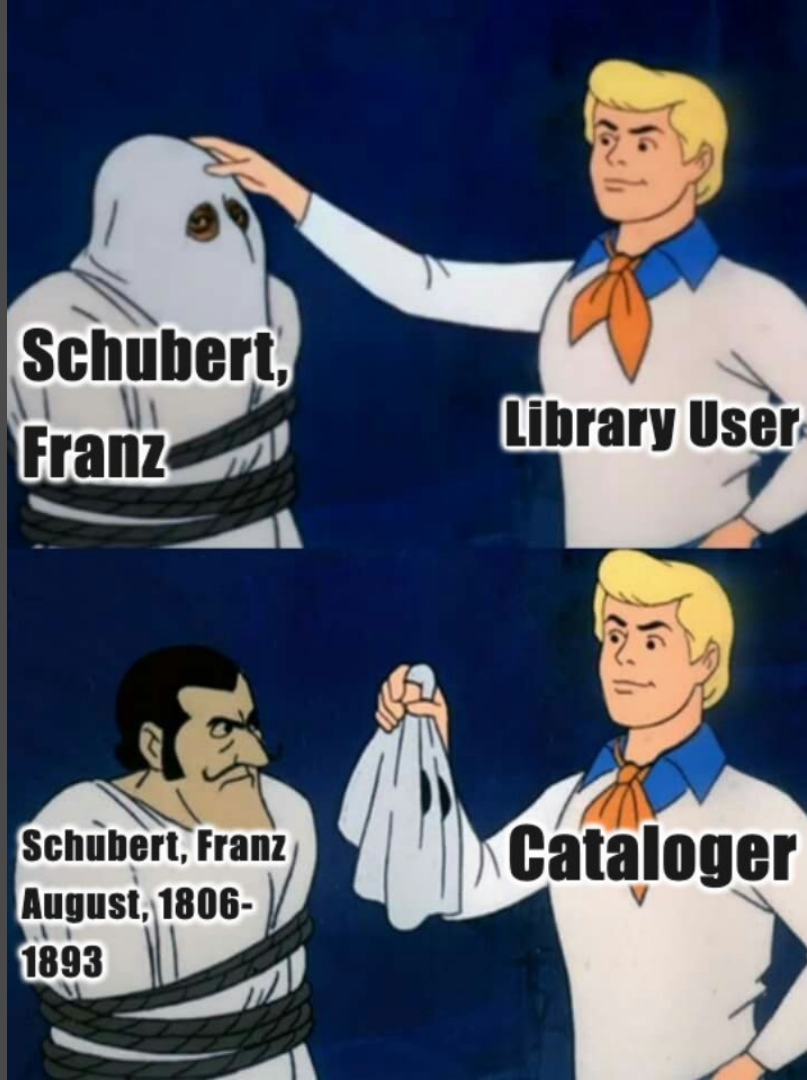


# E Pluribus Unum Aligning LAM Metadata

robert.  
sanderson  
@yale.edu

timothy.  
thompson  
@yale.edu

Yale



# Will the Real Franz Schubert Please Stand Up?

## 37 People & Groups results

Records representing individuals and organizations that match your search.

List View

Sort By

desc

Has Digital Image



Gender



Nationality



Person or Group Class



Categorized As



Born/Formed At



Born/Formed Date



Died/Dissolved At



Died/Dissolved Date



Occupation/Role



Professionally Active At



**Franz Schubert,  
1917-2001**

Business  
German



**Franz Schubert  
Quartett, 1974-**



**Franz Ludwig  
Schubert, 1804-  
1868**

Composers  
German



**François  
Schubert, 1808-  
1878**

Composers  
German



**Internationales  
Franz Schubert**

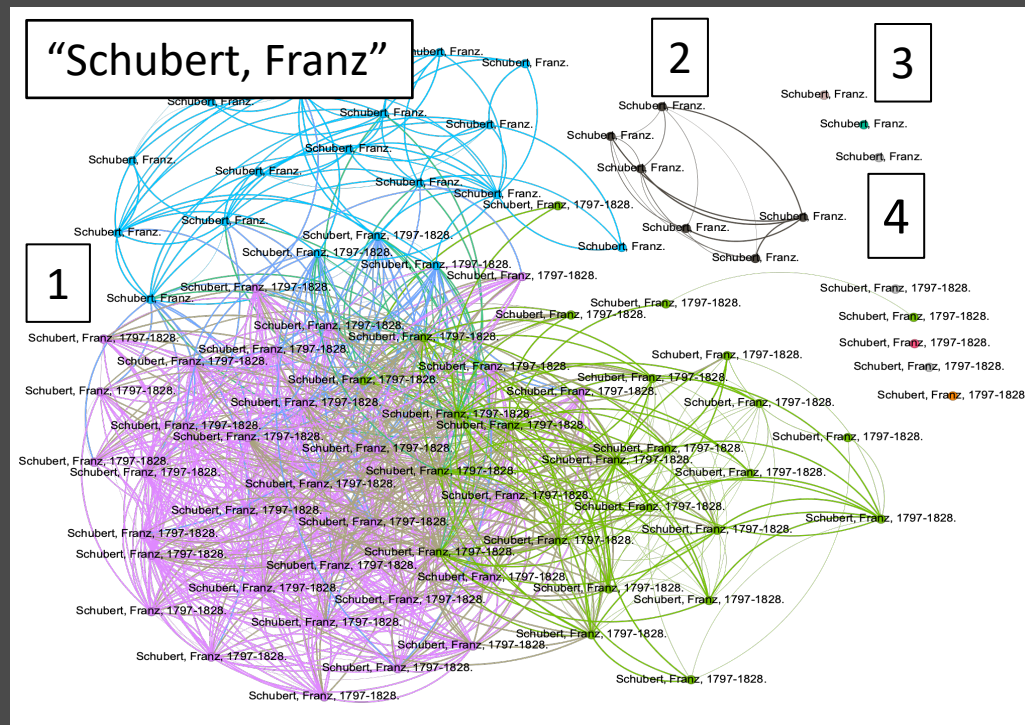


**Franz Anton  
Schubert, 1768-**



# Even More Solutions!

Entity resolution pipeline with text embeddings





# Conclusions

- Connected catalog data greatly expands potential for search and discovery
- Need to manage identifiers rather than names
- Need to map from card catalogs to the real world, to ensure consistency and connectedness
- Some current practices made it difficult
- But it's possible today!

# Thank You! Discuss!

<https://lux.collections.yale.edu/>  
<https://github.com/project-lux/>

# Metadata Panel: Metadata Collaboration Across Cultural Heritage Institutions



## **Webex:**

Please submit questions in chat  
and address the chat to “everyone”

## **Vimeo livestream:**

Please use the form on the  
livestream page to submit  
questions

# OCCLC cataloging community meeting

18 June 2025

# Break



**OCCLC cataloging  
community meeting**

thank you

18 June 2025

#OCLCcataloging

