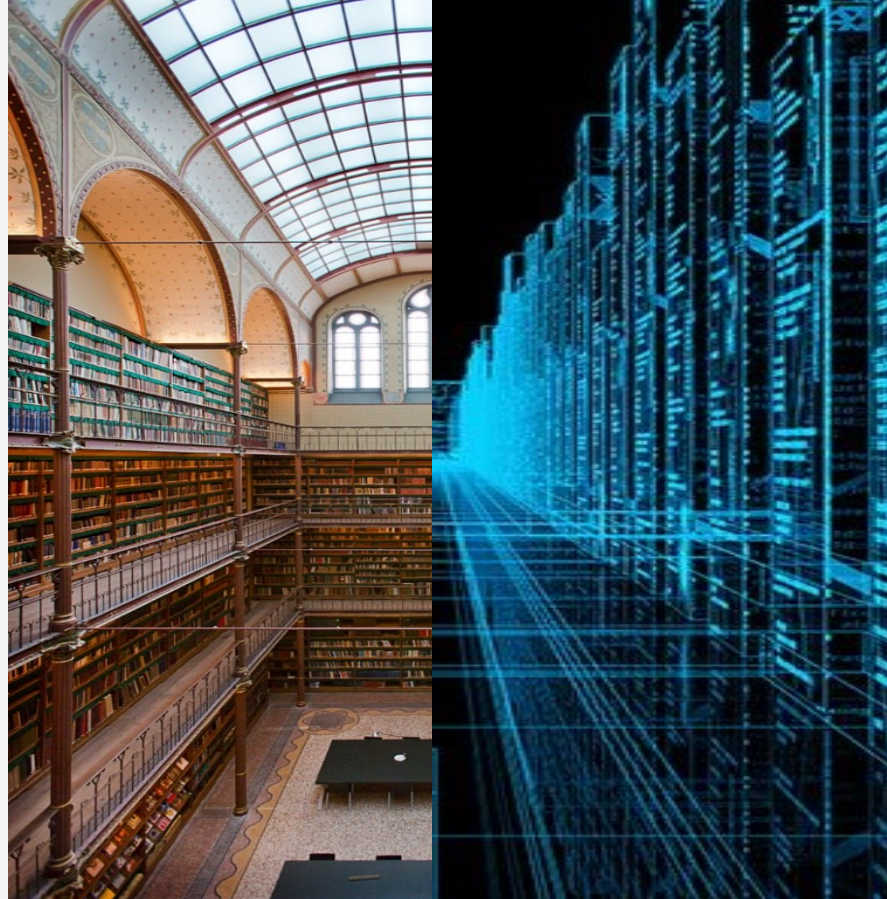


REDEFINING LIBRARIES IN A NETWORKED WORLD

Saskia Scheltjens (she/her)
Head Research Services Department
Chief Librarian Rijksmuseum Research Library



OCLC-LIBER Opening Plenary Session
12/10/2023

RIJKS MUSEUM



Photo: John Lewis Marshall

National Museum of Art and History (Netherlands)

Vision : Connect people, art and history

RIJKS MUSEUM

A photograph of the Rijksmuseum in Amsterdam at dusk. The building is illuminated from within, and the sky is a mix of blue and purple. The words 'KNOWLEDGE', 'INFORMATION', and 'DATA' are overlaid in large, white, semi-transparent capital letters across the center of the image. The building's architecture is Gothic Revival, featuring two prominent towers with spires and a central entrance with large arched windows.

KNOWLEDGE
INFORMATION
DATA

CONTINUUM

RIJKS MUSEUM



*Mrs Marjorie Bottenheim,
the facto head of the Library
from 1934 until 1961*



*Else Van der Vossen-Delbück,
first official Chief Librarian
from 1962 to 1988*

#ADALOVELACE DAY

RIJKS MUSEUM



*Mss Marjorie Bottenheim,
de facto head of the Library
from 1934 until 1961*



*Else Van der Vossen-Delbück,
first official Chief Librarian
from 1962 to 1988*



*Geert-Jan Koot,
my predecessor as Chief
Librarian from 1988 to 2016*

DEPARTMENT OF RESEARCH SERVICES (2016-)

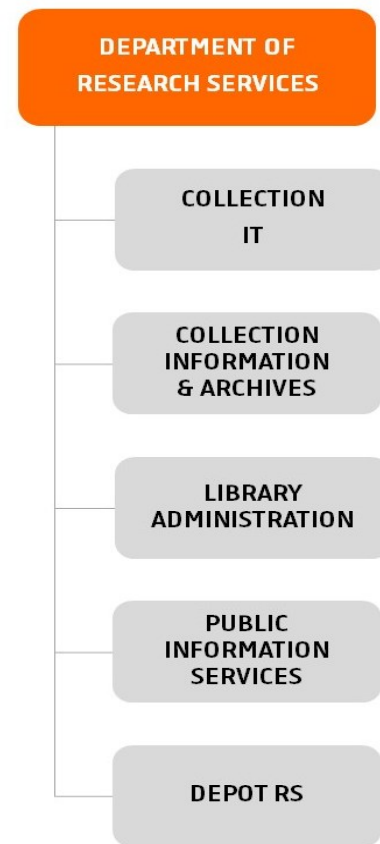
New department, integrating the Rijksmuseum Research Library (the *de facto* National Art Library) into a larger whole

+/- 50 people (2023) – 100% increase in 7 years

Internal LAM-ification (library/archive/museum)

New responsibilities: research data management, open (FAIR) collection data & -policies, digital (collection) strategy and open science

INCORPORATING LIBRARY INTO LARGER CONCEPT



RIJKS MUSEUM



One of the three changes in Collection Directions

'the library has an increasing role in managing the research and other outputs of an institution'

**Lorcan Dempsey
(2010-2020)**



Rijksmuseum Research
Library



Collection Documentation
& Institutional Archives



Collection Data – Research Data
Open Data Services

DIVERSE & HYBRID COLLECTION INFORMATION & DATA

RIJKS MUSEUM



Rijksmuseum Research
Library



Collection Documentation
& Institutional Archives



Collection Data – Research Data
Open Data Services

COLLECTION INFORMATION & DATA x COLLECTION

RIJKS MUSEUM



Rijksmuseum Research
Library



Collection Documentation
& Institutional Archives



Collection Data – Research Data
Open Data Services

COLLECTION INFORMATION & DATA x PEOPLE

RIJKS MUSEUM



RICH & LINKED COLLECTION INFORMATION & DATA

RIJKS MUSEUM



‘Digital is a dimension of everything’

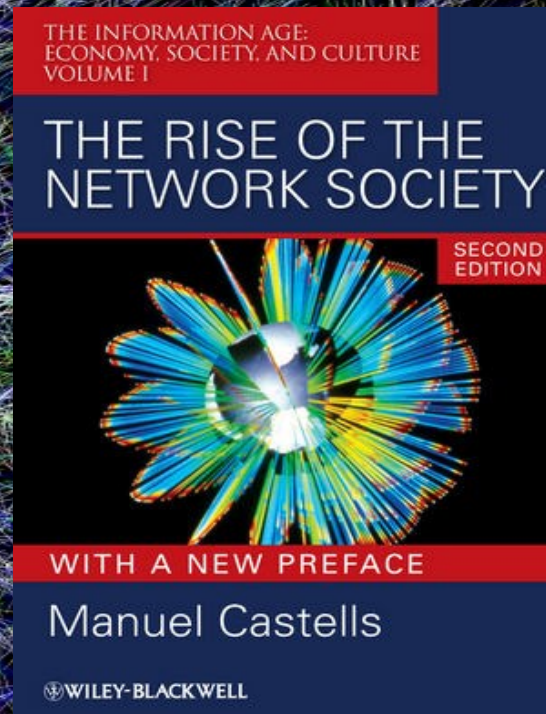
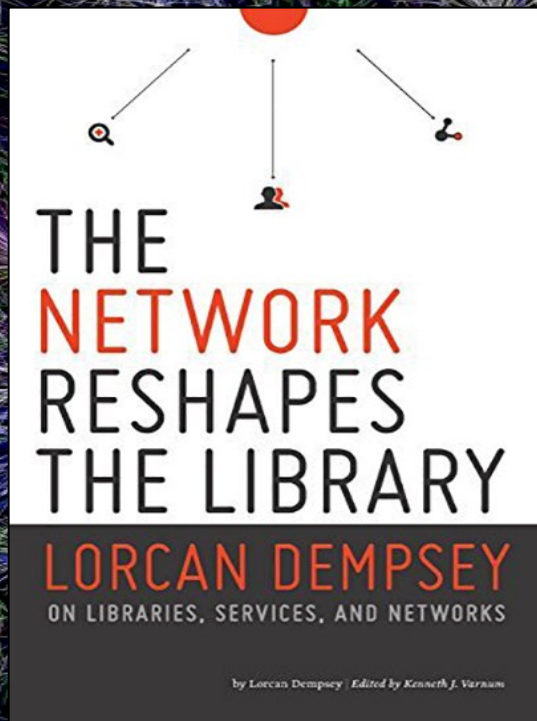
John Stack

Head of Digital - Science Museum London

Photo: John Lewis Marshall

INTEGRATED DIGITAL APPROACH

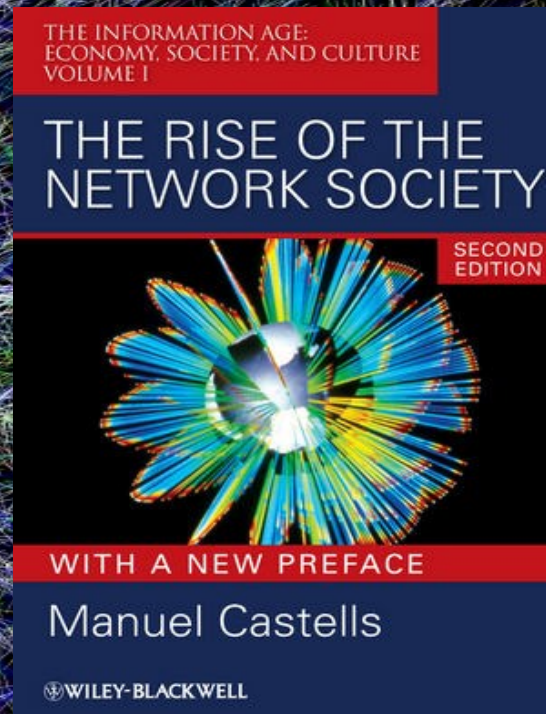
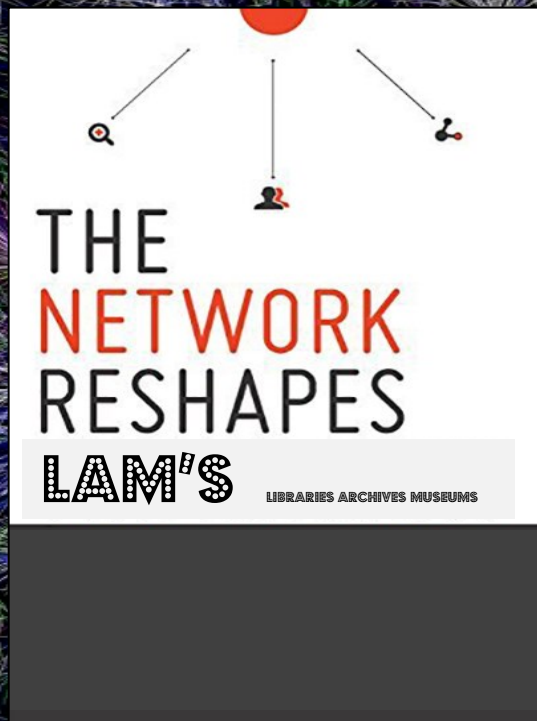
RIJKS MUSEUM



Full access to library collections - CC BY-NC-ND
API access to the museum collections - CC BY-NC-ND

DIGITAL TURN

RIJKS MUSEUM



Full access to library collections - CC BY-NC-ND
API access to the museum collections - CC BY-NC-ND

DIGITAL TURN

RIJKS MUSEUM

COLLABORATION across borders & disciplines

A data driven approach can act as a first starting point

- between LAM's (across disciplines)
 - Silence of the LAM's report (2008)
- between libraries (across institutions and/or international)
 - Thematic Art Discovery Group Catalogue
 - Op Art Initiative & Case-Studies (2023)
 - Collective Collection – concept


Beyond the Silos of the LAMs
Collaboration Among Libraries, Archives

Diane M. Zorich
Information Management Consultant

Günter Waibel
Program Officer

Ricky Erway
Senior Program Officer

OCLC Research




OCLC
A publication of OCLC Research

**An Art Resource in New York:
The Collective Collection of the NYARC
Art Museum Libraries**


Brian Lavoie, Ph.D.
Senior Research Scientist

Günter Waibel
Program Officer

OCLC Programs and Research



OCLC
A publication of OCLC Programs and Research



ArtDiscovery
GROUP CATALOGUE


Advanced Search

Search Art Libraries and beyond



**Sustaining Art
Research Collections:
Using Data to Explore Collaboration**

Brian Lavoie, Dennis Massie, Chela Scott Weber



**Staining Art
search Collections:
Studies in Collaboration**

Massie, Chela Scott Weber,
Prozacinski, Brian Lavoie



Links to the documents added behind the images

COLLABORATION

RIJKS MUSEUM

SHARED GOAL

Integrated, linked and polyvocal
information & data,
as open as possible to every human

allowing for

more robust and good **research** and
a richer, more equal and diverse **society**



Christuskind in de hemel, Johann Sadeler (I) – 1584
<http://hdl.handle.net/10934/RM0001.COLLECT.168326>

RIJKS MUSEUM

Communities and cooperation are
a large part of what it means
to be **libraries.**

Eric Lease Morgan



<https://github.com/ericleasemorgan>

RIJKS MUSEUM

‘The Cultural Heritage* Life Cycle’ (2000)

** Memory institutions = LAM’s = Cultural Heritage Institutions*

‘The Network Transforms the Library’ (2003-2014)

‘Three Collection Directions (2010-2020)

- The Collective Collection
- The Facilitated Collection
- The Inside-Out Collection’

Beyond the silence of the LAM’s – report

Zorich, Waibel, Erway (2008)

Collaboration (2019)



<https://www.linkedin.com/in/lorcand/>

Lorcan Dempsey
former chief strategist
OCLC (2001-2022)

QUESTIONS? REMARKS?

Always happy to talk.

Saskia Scheltjens (she/her)

s.scheltjens@rijksmuseum.nl

@saschel@mastodon.social

This presentation uses images with an open licenses or otherwise indicated

