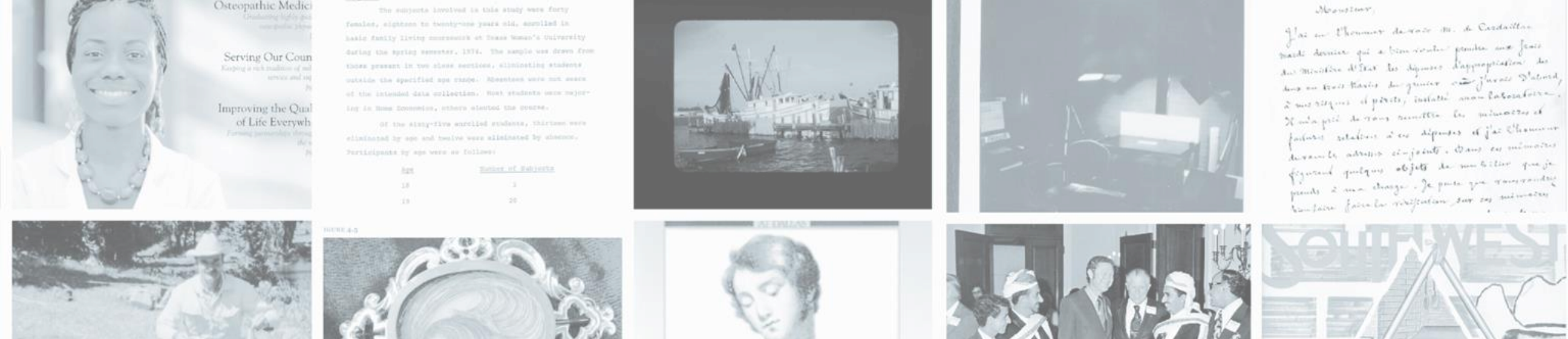




TDL.ORG
TEXAS DIGITAL LIBRARY

Collaborative Research Data Strategies
at the Texas Digital Library

Courtney Mumma, MAS/MLIS, she/her, Deputy Director, TDL



About TDL

Equitable access to and preservation of digital content

- Repository hosting (DSpace)
- ETD workflow/publication (Vireo)
- Texas Data Repository (Dataverse)

- Journal hosting (OJS)
- Digital Preservation Services (DuraCloud, Chronopolis)
- DPLA Aggregations



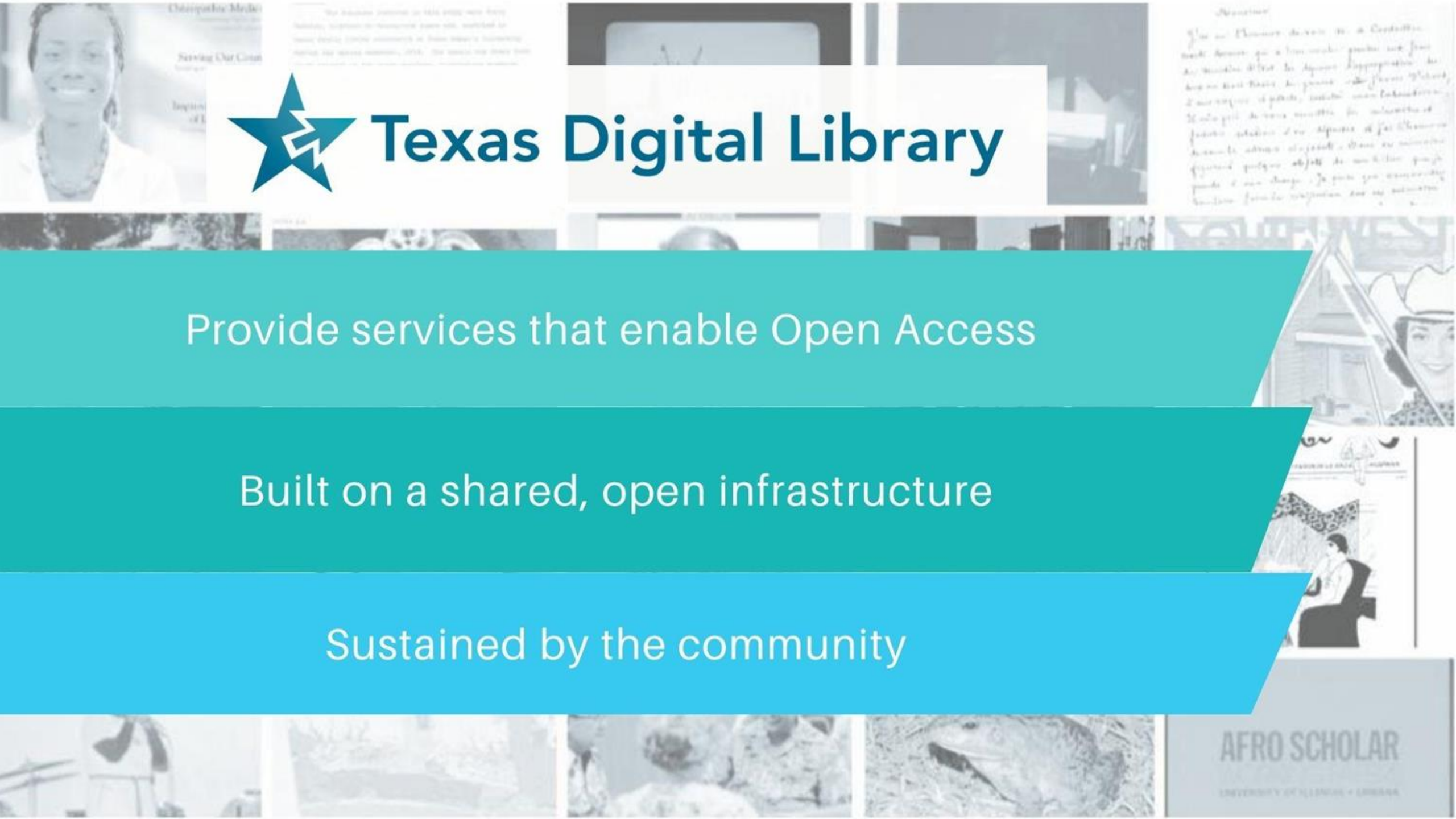


Texas Digital Library

Provide services that enable Open Access

Built on a shared, open infrastructure

Sustained by the community



TDL MEMBER INSTITUTIONS

Angelo State University
Arizona State University
Baylor University
Houston Public Library
Sam Houston State University
Southern Methodist University
Tarrant County College
[Texas Advanced Computing Center](#)
Texas A&M - Galveston
Texas A&M International University
Texas A&M University
Texas A&M University - Corpus Christi
Texas State University
Texas Tech University
Texas Woman's University

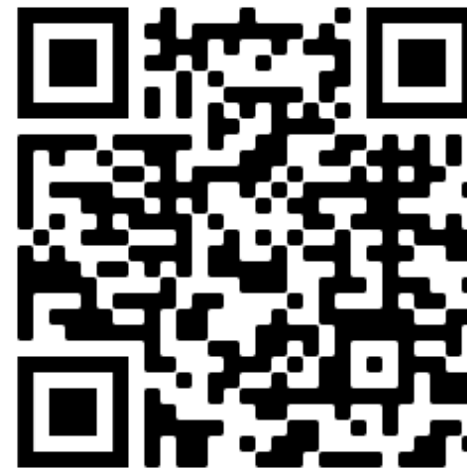
University of Dallas
University of Houston
University of Houston - Clear Lake
[University of Illinois-Chicago](#)
University of North Texas
University of Texas - Rio Grande Valley
University of Texas at Arlington
University of Texas at Austin
University of Texas at Dallas
University of Texas at San Antonio
UNT Health Science Center
[UT Health San Antonio](#)
UT Medical Branch at Galveston
UT Southwestern Medical Center
West Texas A&M University

Fee structure

- Supported by membership fees + service fees + labor contributions
- Tiered membership categories based on type of institution
- Cost recovery
- Full membership > Consortium governance



Scan for more about
TDL membership fees



OPEN ACCESS SERVICES



DIGITAL REPOSITORY HOSTING

24 Repositories
416,000 items
> 10 mil downloads in
AY23



ETD SUBMISSION & MANAGEMENT

14 institutions
Released version 4.1.5



TEXAS DATA REPOSITORY

14 institutions
~2,500 datasets
>200,000 files
70% publicly accessible



OPEN ACCESS JOURNAL HOSTING

88 hosted Open Access
journals
11 institutions



DIGITAL PRESERVATION SERVICES



CHRONOPOLIS

55.8 tb member data
~100TB in Chronopolis node
750 tb in Portico node at TACC



[Texas Data Repository](#) Search About User Guide Support Log In

Baylor University

 BEARdata Baylor Electronically Accessible Research Data
 (Baylor University)

Texas Data Repository >

Baylor Electronically Accessible Research Data (BEARdata) is the data repository for Baylor University hosted at the Texas Data Repository

Search this dataverse... Advanced Search

Dataverses (113) 1 to 10 of 184 Results
 Datasets (71)

Supporting Data for "The Martian Boulder Automatic Recognition System, MBARS"

Mavs Dataverse Repository Making UTA Data Available to Expand Our Reach and Impact Our World.
 (The University of Texas at Arlington)

Texas Data Repository >

Black Studies & Digital Humanities Database

UTA Libraries Database

Social Networks for Social Good Database

Center for Earth System CTE

Search this dataverse... Advanced Search

University of Houston Dataverse Repository

 (University of Houston)

Texas Data Repository >

Search this dataverse... Advanced Search

Dataverses (20) 1 to 10 of 47 Results
 Datasets (27)
 Files (415)

Integrating Genome-wide CRISPR Immune Screen with Multi-omic Clinical Data Reveals Tumor Intrinsic Immune Regulators

Texas A&M International University Dataverse

 (Texas A&M International University)

Texas Data Repository >

Search this dataverse... Advanced Search

Dataverses (5) 1 to 10 of 32 Results
 Datasets (27)
 Files (2,011)

Data analytics development materials

TAMU Galveston Dataverse

 (Texas A&M University at Galveston)

Texas Data Repository >

Texas A&M University Dataverse Repository

 (Texas A&M University)

More information about Research Data Management Services at Texas A&M.

Texas Data Repository >

Search this dataverse...

Dataverses (11)
 Datasets (43)
 Files (1,560)

Dataverse Category

Search this dataverse... Advanced Search

Dataverses (112) 1 to 10 of 453 Results
 Datasets (341)
 Files (9,048)

Caribou resilience

May 22, 2022 - PSBarboza Dataverse

Barboza, Pereorine. 2022. "Caribou resilience". <https://doi.org/10.18738/T8/UJRYLF>. Texas Data Repository.

Texas Tech University Dataverse

 (Texas Tech University)

Texas Data Repository >

Search this dataverse... Advanced Search

Dataverses (15) 1 to 10 of 45 Results
 Datasets (30)
 Files (1,793)

The Impact of COVID-19 on College Students

Research Data

 (Texas State University)

Texas Data Repository >

Search this dataverse... Advanced Search

Dataverses (20) 1 to 10 of 47 Results
 Datasets (27)
 Files (415)

Integrating Genome-wide CRISPR Immune Screen with Multi-omic Clinical Data Reveals Tumor Intrinsic Immune Regulators

Cognitive Electrophysiology Lab

Dalton & Trujillo (2021)- Brain Sciences

Building COVID-19 Vaccine Confidence Among Nursing Students and the Community

Accessibility in Institutional Repositories

Search this dataverse... Advanced Search

Dataverses (10) 1 to 10 of 101 Results
 Datasets (91)
 Files (9,608)

Supplemental Material for Demonstrating Eye Movement Biometrics in Virtual Reality

Jul 5, 2022 - OK Lab

Lab Pillay, Ishana, Sridhar, Anish, Sureshbabu, Komarath, Chin 2022. "Supplemental Material for Demonstrating Eye Movement Biometrics in Virtual Reality".

University of Texas at Austin Dataverse Collection

 (University of Texas)

What Starts Here Changes the World

Texas Data Repository >

The University of Texas at Austin Dataverse Collection serves as a platform for publishing and archiving the University's research data. It was established to help UT-Austin's research community meet data sharing requirements, to facilitate data citation, to promote collaboration, to enable reproducibility, and to encourage reuse.

Program in Aegean Scripts and Prehistory Dataverse

Bridging Barriers Collection

Shakespeare Chronology Project Dataverse

Arts Partnership Network Assessment

Search this dataverse... Advanced Search

Dataverses (230) 1 to 10 of 985 Results
 Datasets (758)

The Dataverse Project

14 hosted Dataverse repositories
 data + code + metadata + readme
 files + docs



TDL Steering Committee

Annual Meeting at the Texas Conference on Digital Libraries 2023

A collaborative model

TDL staff responsibilities:

- Systems and application maintenance
- Software development
- User support (TDL Helpdesk)
- Training for new users
- Support for Global Dataverse Community Consortium (annual membership) and Dataverse Project at Harvard (code contributions and development engagement)
- Community coordination: The Texas Data Repository Steering Committee

Member responsibilities:

- Content management and curation
- Repository administration
- Access and upload control
- Local policy development
- Engagement with/leadership of the TDL community of users and TDR Steering Committee



Sharing

- User documentation and videos
- Assessment and statistics
- Steering Committee charter and administrative documentation
- Shared resources (slides, workshops, templates for terms of use, read me files, data management plans, etc)
- Policies
- Promotional and marketing materials
- Metadata and log report data dictionaries
- And more!

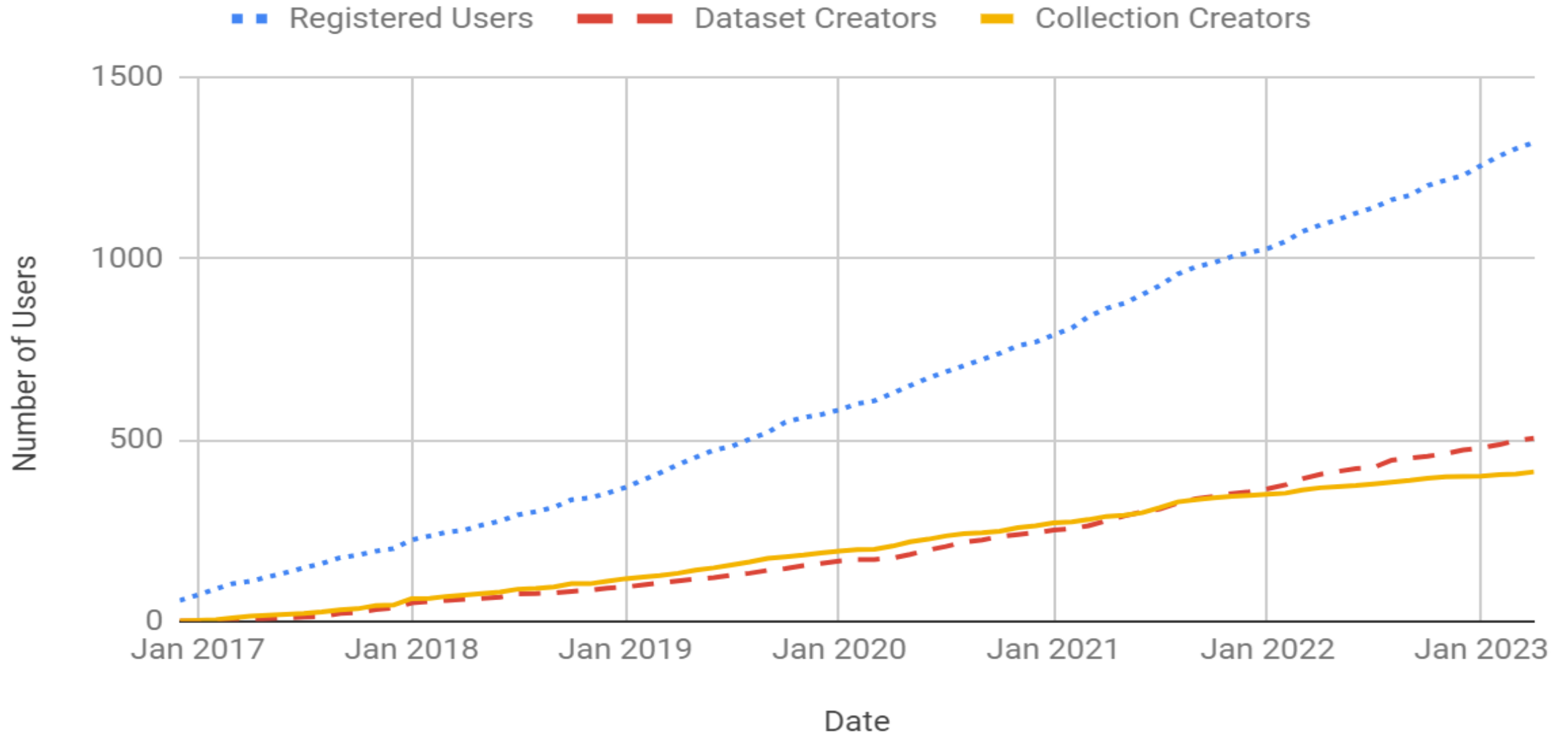
Welcome!

This site contains user documentation for the Texas Data Repository, powered by the Dataverse software. More detailed user documentation can be found using the official [Dataverse software user guide](#).

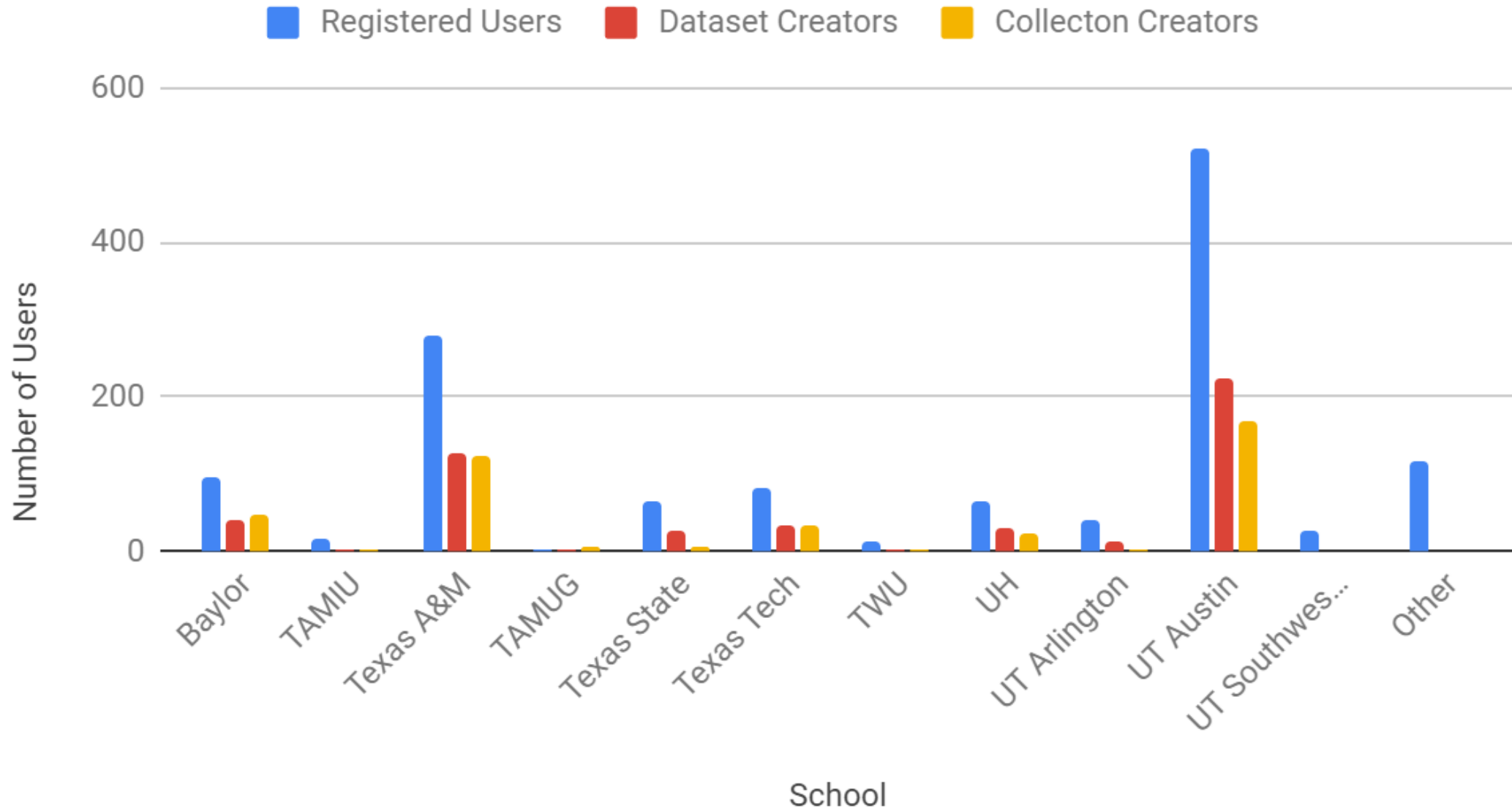
Click here to return to the TDR homepage: <https://data.tdl.org/>

- [Frequently Asked Questions](#)
- [About](#)
- [Guides and Policies](#)
 - [User Guide](#)
 - [Intro Videos](#)
 - [Creating a Dataverse collection](#)
 - [Uploading and Sharing your Data](#)
 - [Managing Your Data](#)
 - [Accessing and Evaluating Data](#)
 - [Metadata Dictionary](#)
 - [Policies](#)
 - [Community Norms](#)
 - [Data Usage Agreement](#)
 - [Deaccessioning Data](#)
 - [Digital Preservation Policies and Procedures](#)
 - [DP Procedures for TDL Administrator](#)
 - [Information Security](#)
 - [Licensing and Permissions](#)
 - [Privacy Policy](#)
 - [Terms of Use](#)
 - [Dataverse Naming Protocols](#)
 - [Procedure for Liaison Usage of the Training Dataverse repository for Workshops](#)
 - [Accessibility](#)
 - [Roles in the Texas Data Repository](#)
 - [Liaison Administration Options](#)
 - [Getting Started](#)
 - [TDR Steering Committee Charter](#)
 - [TDR Steering Committee Project Administration Structure](#)
 - [TDR MOUs and SLAs](#)
 - [Texas Digital Library \(TDL\) DataCite Consortium Membership Policies](#)
 - [Make Data Count - Support Statement of the TDR Steering Committee](#)
- [Resources](#)
 - [Onboarding Resources](#)
 - [TDR Steering Committee Documents and Webinars](#)
 - [Data Management and Dataverse Software and Community Resources and Workshops](#)
 - [University Data Management Resources](#)
 - [Promotional & Marketing Materials](#)
 - [Core Trust Documentation](#)
 - [Legacy Resources](#)
 - [Texas Data Repository Educational Resources](#)
 - [Texas Data Repository Promotional Materials](#)
 - [Texas Data Repository Steering Committee Documentation](#)
 - [Data Management Resources](#)
- [Roadmap](#)

TDR Users by Month



Users by School



MAKE
DATA
COUNT



Webinar Series



TOPICS IN RESEARCH DATA MANAGEMENT

FREE WEBINAR SERIES HOSTED BY THE TEXAS DATA REPOSITORY STEERING COMMITTEE



Topics in Research Data Management

8 videos • 199 views • Last updated on Feb 9, 2021



Texas Digital Library and the Texas Data Repository Steering Committee present a new webinar series showcasing topics in research data management and hosted by research data experts in academic libraries throughout North America.

All the webinars in this series are free and open to anyone who is interested.

Learn more about the series at <https://www.tdl.org/2018/10/texas-dat...>



SUBSCRIBED



2



Topics in Research Data Management #2: Sherry Lake, University of Virginia

texasdigitallibrary

3



Topics in Research Data Management #3: Eric Kaltman, Carnegie Mellon University

texasdigitallibrary

4



Topics in Research Data Management #5: Jonathan Crabtree, The Odum Institute

texasdigitallibrary

5



Topics in Research Data Management #6: Geodisy

texasdigitallibrary

6



Make Data Count

texasdigitallibrary

7



Data Curation Primers

texasdigitallibrary

8



TDR External Tools for Dataverse

texasdigitallibrary





Texas Data Repository

Search ▾

Texas Data Repository Steering Committee
(Texas Digital Library)

Texas Data Repository >

This dataverse collection is for data collected by the Texas Data Repository Steering Committee



[Advanced Search](#)





Texas Digital Library

[TDL DSpace Home](#) / Texas Data Repository Steering Committee

Texas Data Repository Steering Committee

BROWSE BY

By Issue Date

Authors

Titles

Subjects

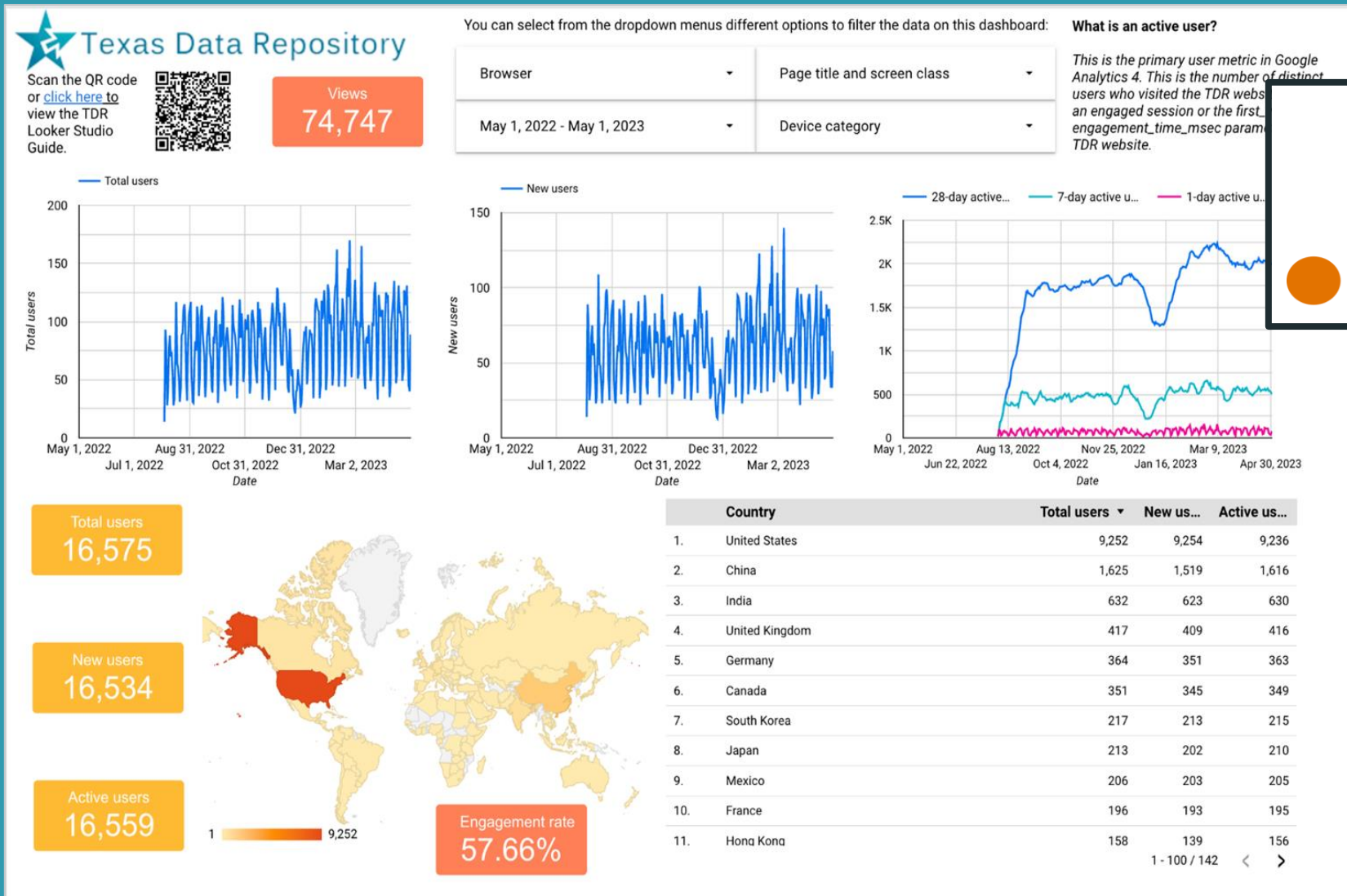
Search within this community and its collections:



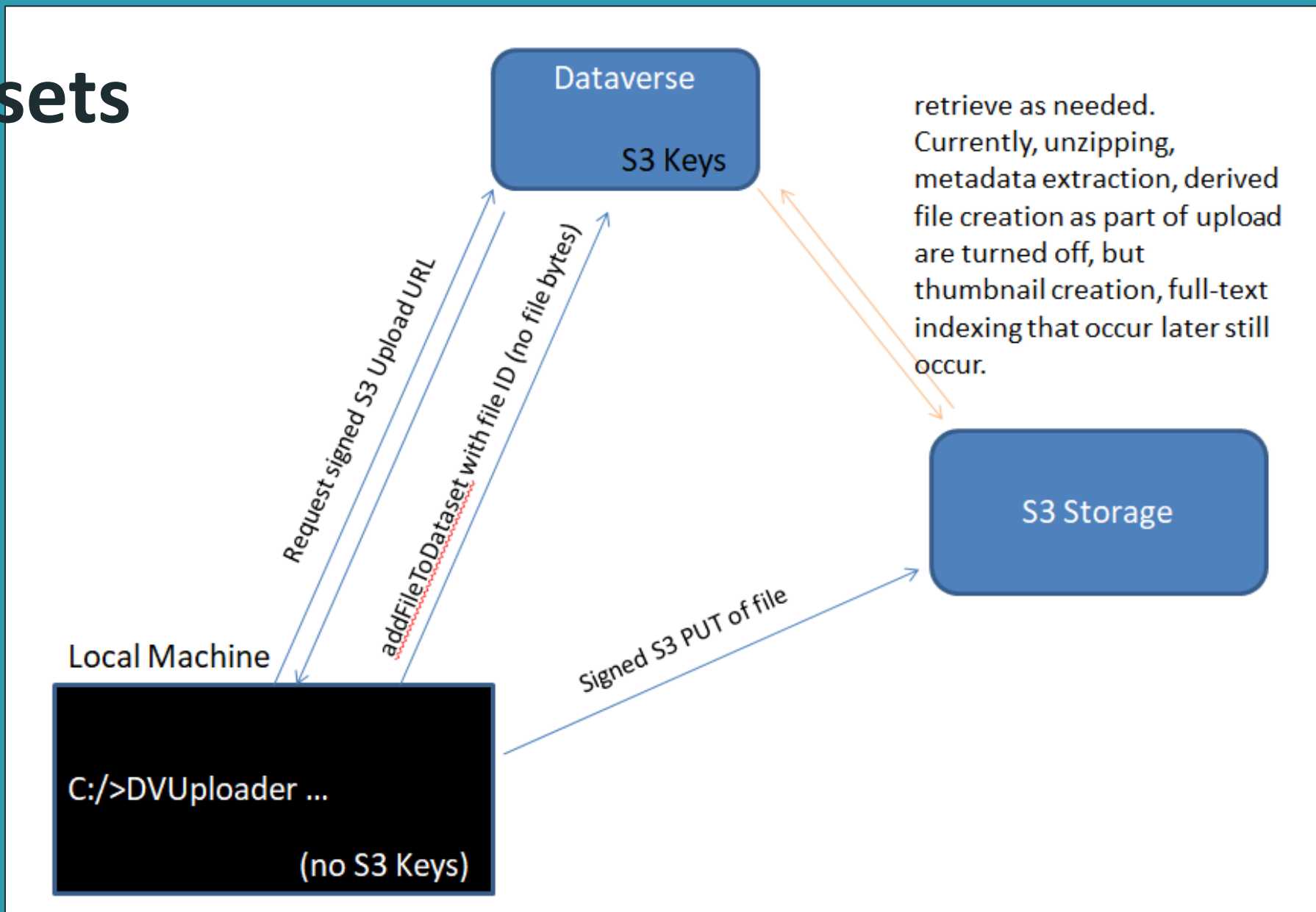


CHRONOPOLIS

Total Views and Usage Data



Larger Datasets



Work at Individual Institutions

TDR/data management presentations for faculty

New workshops on managing sensitive data

Increased department outreach

Updating institutional DMPTool Guidances

Piloting big data pipeline from TACC to TDR

Introduce new NIH requirements to faculty

Metadata Assessment

Cross-campus collaborations on RDM

Monthly workshops on data management for researchers

Course instruction sessions on RDM and TDR

Publication –
Depositing Data: A Usability Study of the TDR

<https://doi.org/10.7191/jeslib.2022.1233>

Work at Individual Institutions

Collaborations with IR Offices to promote TDR as a robust data sharing tool

Updating protocols on data management and sharing best practices

Reviewing DMPs for faculty and researchers

Developing new training sessions as RDM evolves

Liaison training on TDR

Data & Donuts

Collaborations with Office of Vice Provost for Research

Exploring GitHub integration with Dataverse

Workshops on data sharing requirements of grant funding agencies

Report on the state of research data storage on campus

Challenges

- Global development coordination
- Consensus necessary for technology changes and service expansions
- Data Curation - how can the collective serve that need?
- Administration coordination





prioritize people and their needs
to the level of the technology
systems

Building research data management capacity

- Report coming soon

