

The Prolific RIM: Mapping Research Support Activity in Libraries

John MacColl
European Director

The New Theme

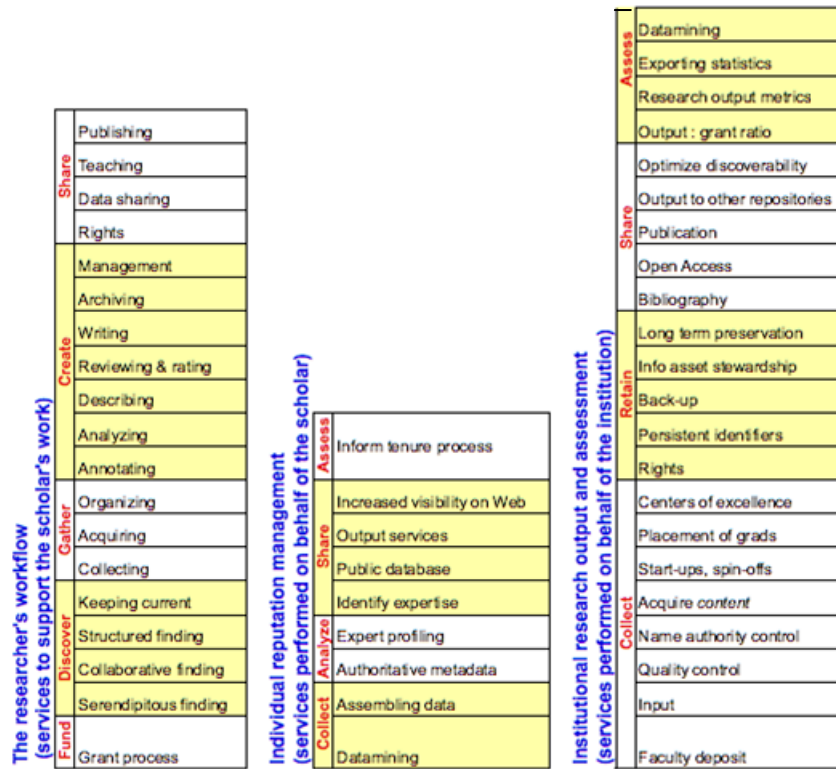
RIM: Research Information Management

- WRAP: Workflows in Research Assessment Program
 - Survey of Current Practice Project
- Support for the Research Process Program
 - Academic Research Landscape Project
 - Personal Research Collections Project

Different emphases



New workflows



Library

Research
Administration
(inward-facing/
outward-facing)

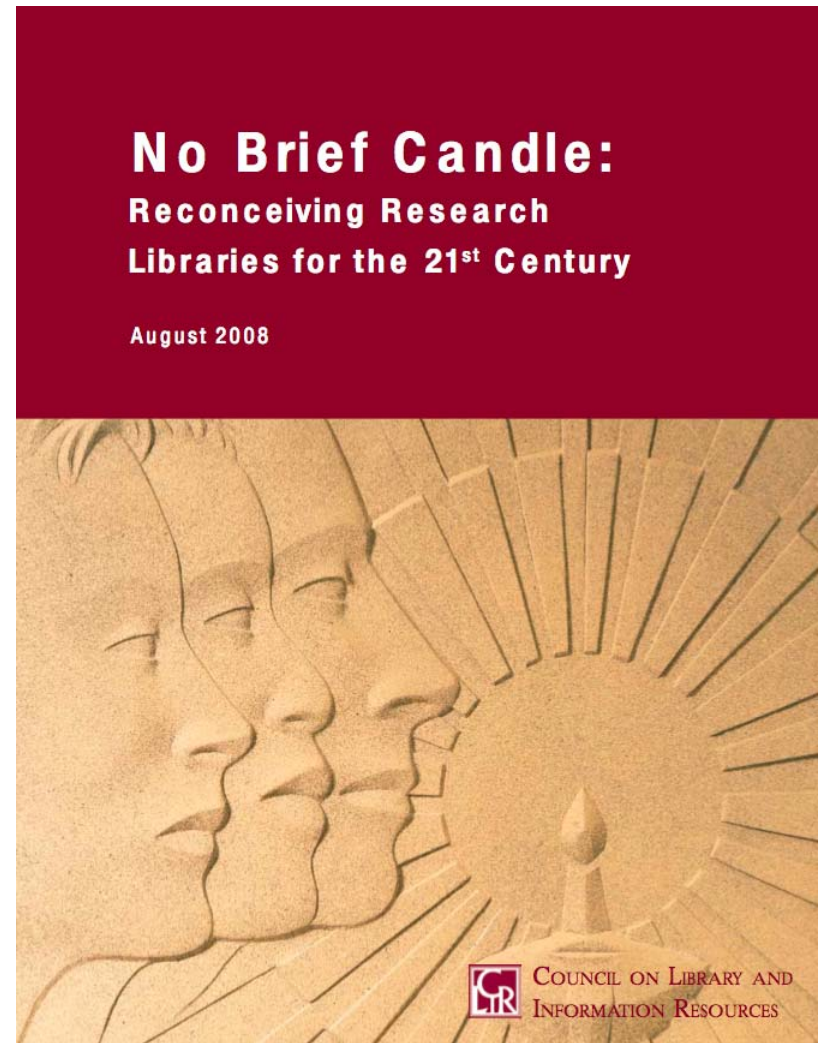
Business
Processes

Which of these are for libraries to claim?

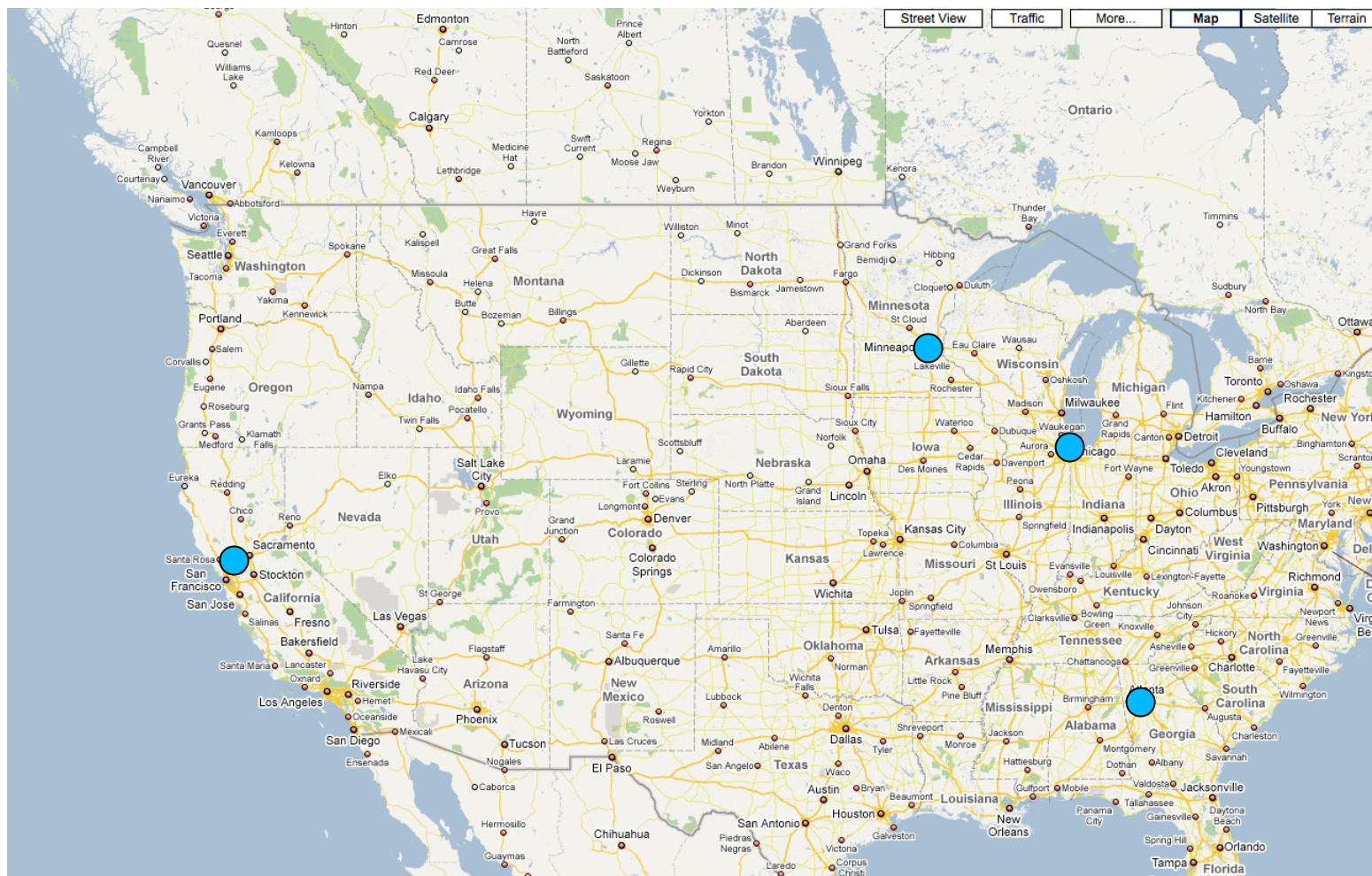
Libraries acting institutionally, collectively, globally?

Timely work

- **Redefining the RIM:** 'One participant suggested re-envisioning the library by turning the organization inside out. Look at where the fringe activity is now, he said, and think about how it would look at the center of library functions. At the center could be investment in metadata—making material available to the scholarly community in a systematic way. Activities such as management of print archives and rationalizing print collections are at the periphery now. What if they were at the center? Multimedia collections are relatively weak, as is the ability to describe them. Suppose they were at the center? Scholarly communication and the creation of digital resources would be put at the center. Print and journal material, now central, would be at the edges.' (Introduction)
- **Capturing process:** 'Of greater import is the emergence of digital humanists who continue to focus on narrative, discursive, and essentially qualitative ways of investigating what it means to be human. It is these scholars, interrogating new forms of discourse, narrative, communication, community building, and social networking, who will spend most of their time on the open Web and use wiki and blogging applications, social software, and other as-yet-undreamt-of applications. All these multimedia forms of discourse will present special challenges for collection development and preservation because of their inherent bias toward process over product, a bias that resists fixing expression in the canonical forms upon which analog preservation practices are dependent.' (Abby Smith)

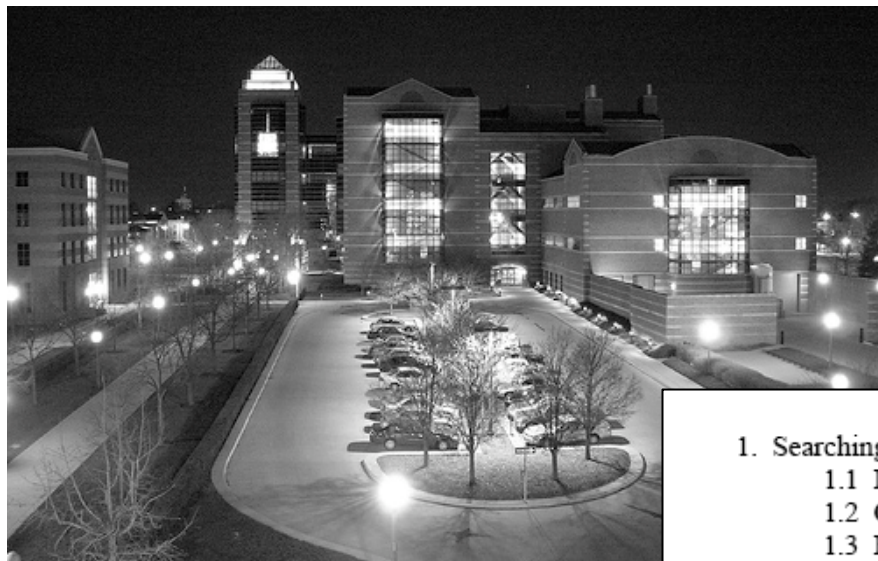


Research Support Workflows



Radisson Hotel Paris Boulogne, Thursday 6 November
The Prolific RIM: Mapping Research Support Activity in Libraries

At UIUC ...



Carole Palmer: Personal
research collections study
for RLG Programs,
September 08

'Primitives'

1. Searching
 - 1.1 Direct searching
 - 1.2 Chaining
 - 1.3 Browsing
 - 1.4 Probing
 - 1.5 Accessing
2. Collecting
 - 2.1 Gathering
 - 2.2 Organizing
3. Reading
 - 3.1 Scanning
 - 3.2 Assessing
 - 3.3 Rereading
4. Writing
 - 4.1 Assembling
 - 4.2 Co-authoring
 - 4.3 Disseminating
5. Collaborating
 - 5.1 Coordinating
 - 5.2 Networking
 - 5.3 Consulting
6. Cross-cutting Primitives
 - 6.1 Monitoring
 - 6.2 Notetaking
 - 6.3 Translating
 - 6.4 Data Practices

'Primitives' → Services



The Prolific RIM: Mapping Research Support Activity in Libraries

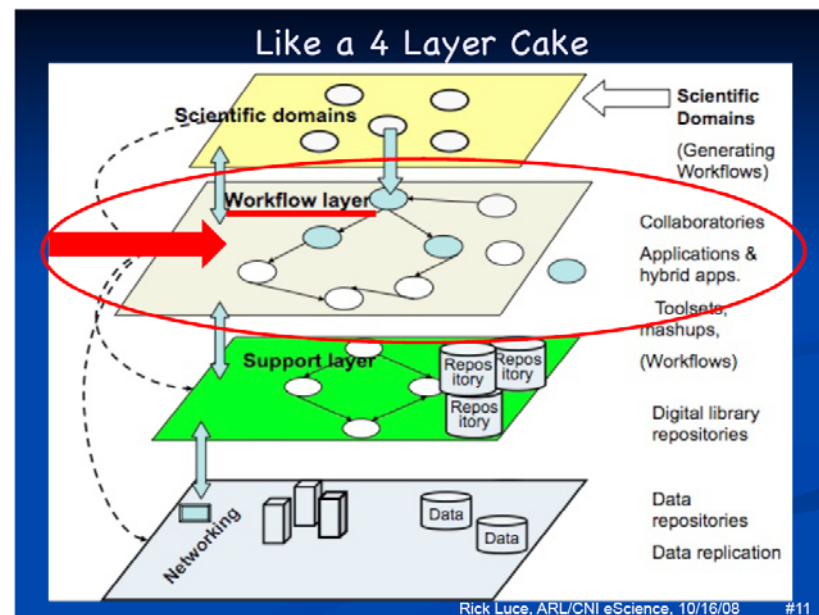
At Berkeley ...



Diane Harley. Mellon-funded study. Interim Report, August 08

“Our work to date has confirmed the important impact of disciplinary culture and tradition on many scholarly communication habits. These traditions may override the perceived “opportunities” afforded by new technologies, including those falling into the Web 2.0 category.”

At Emory ...



Rick Luce: ARL/CNI presentation on the future support of eResearch, October 2008

Research Assessment Workflows



Radisson Hotel Paris Boulogne, Thursday 6 November
The Prolific RIM: Mapping Research Support Activity in Libraries

In the UK ...



Research Assessment
Exercise → Research
Evaluation Framework
Pilot underway
Half of 'dual funding'
research pot at stake.

In Ireland ...



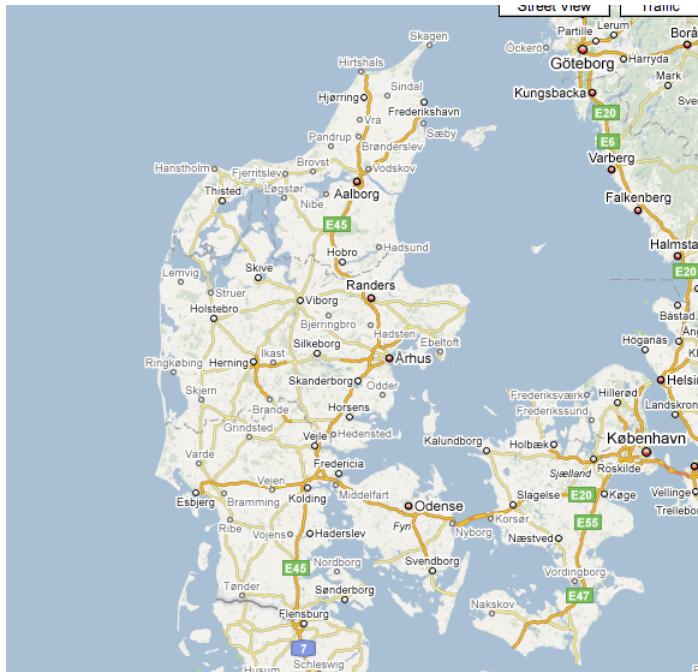
Niamh Brennan of Trinity College Dublin at Repository Fringe, July 2008. Ireland has a national (and island-wide in some respects) research information management system. TCD has developed its own integrated CRIS to face inwards and outwards to the national system.

In the Netherlands



Various components of a national CRIS system in place, with repositories in a leading role. DAI system for author identification. *Cream of Science* and *Promise of Science*. METIS system for CRIS join-up. Financial stakes not high.

In Denmark ...



Well-developed national infrastructure for research information systems in support of assessment (PURE). Low financial stakes again.

In Australia ...



Research Quality Framework → Excellence in Research for Australia. A league table of journals. Workshop on issues and solutions associated with author and researcher identity management in the digital age, June 08. Some good CRIS developments. Financial stakes currently low.

Drilling down into Edinburgh ...



Radisson Hotel Paris Boulogne, Thursday 6 November
The Prolific RIM: Mapping Research Support Activity in Libraries