



RLG Programs

# SHARES Meeting

**Dennis Massie**  
**RLG Programs**

**Biddle Law Library**  
**University of Pennsylvania**  
**November 9, 2007**

**Dennis\_Massie@[oclc.org](mailto:dennis_massie@oclc.org)**

# SHARES in the Past 18 Months

- Migrated away from peer-to-peer model
- Saw over 80 libraries change ILL systems
- Moved net lending functions to IFM
- Shifted discovery almost completely to WC
- Gained three new participants
- Lost five participants
- Kept doing what we've always done
- (now exhale)

# RLG Union Catalog Records into WC

- Institutional records are retained along with master records within WorldCat
- If you requested that RLG extract your records and send them to OCLC, your records were loaded by the end of the summer.
- Record extractions from local systems began loading in July.
- Many libraries have not yet extracted and sent records.
- The first contact by OCLC is to be within 90 days after receiving extracted records
- A former RLG dataloads specialist is working with a group in Ohio to refine processes and tracking

## **SHARES Executive Group: Finishing 2-year terms**

- Jane Clark, University of Toronto
- Susan Currie, Binghamton University
- Jon Evans, MFA Houston
- David Larsen, University of Chicago
- Marjory Lobban, University of Edinburgh

## **SHARES Executive Group: Continuing 2-year terms**

- Michelle Foss, Florida
- Jesse Koennecke, Cornell
- Merle Slyhoff, Penn Law

## **SHARES Executive Group: Projected Make-up for 2008**

- Michelle Foss, Florida
- Jesse Koennecke, Cornell
- Merle Slyhoff, Penn Law
- Susan Currie, Binghamton University
- Marjory Lobban, University of Edinburgh
- Susan Stone, University of Toronto
- 3 new nominees

## **SHARES Executive Group: Projected Work Areas for 2008**

- Survey partnership
- Develop SHARES marketing kit
- Bring Vision Statement up-to-date
- Review pricing structure
  
- Also under consideration:
  - Having a technical “lead” on SEG
  - Explore ways to work with Office of Research
  - Pro-actively seek to make SHARES a sort of workshop for trying new models and technologies

# SHARES Practitioners Council

- Carol Bringham, Temple
- Debbie Heiden, Michigan
- Helen Insinger, Binghamton
- Carol Jones, Yale
- Mindy Kent, Harvard Law
- Aimee Lind, Getty
- Margarita Moreno, NLA
- Kristina Rose, NYU



## **Tightly Focused Working Groups (volunteers wanted)**

- Rethink onsite access
- Restore detailed SHARES guidelines to Web site
- Investigate what's not being filled
- Establish benchmarks for high performance lending

# Sharing Expertise Working Group

- Jennifer Block, Princeton
- Barbara Coopey, Penn State
- Kristina Rose, NYU

# SHARES Net Lending: Reports on Web (soon)

- 2005-2006 (12 months)
  - **87,858 fills**
  - **114 libraries**
  - **80 institutions**
  
  - **31 net lenders**
  - **49 net borrowers**
  - **\$275,900 exchanged**
  
  - **3 < \$100**
  - **24 < \$1,000**
  - **53 < \$5,000**
  - **13 > \$10,000**
- 2006-2007 (11 months)
  - **66,612 fills**
  - **111 libraries**
  - **79 institutions**
  
  - **34 net lenders**
  - **45 net borrowers**
  - **\$221,610 exchanged**
  
  - **6 < \$100**
  - **33 < \$1,000**
  - **59 < \$5,000**
  - **10 > \$10,000**

# **OCLC Programs and Research Update**

**Supporting new modes of  
research, teaching and learning**

**Renovating  
descriptive  
and organizing  
practices**

**Managing  
the collective  
collection**

**Modeling  
new service  
infrastructures**

**Measurement and behaviors**

**Architecture and standards**

## OCLC Programs & Research Themes



Managing the  
Collective Collection



Renovating Descriptive  
& Organizing Practices



Modeling New Service  
Infrastructure



Architecture  
& Standards

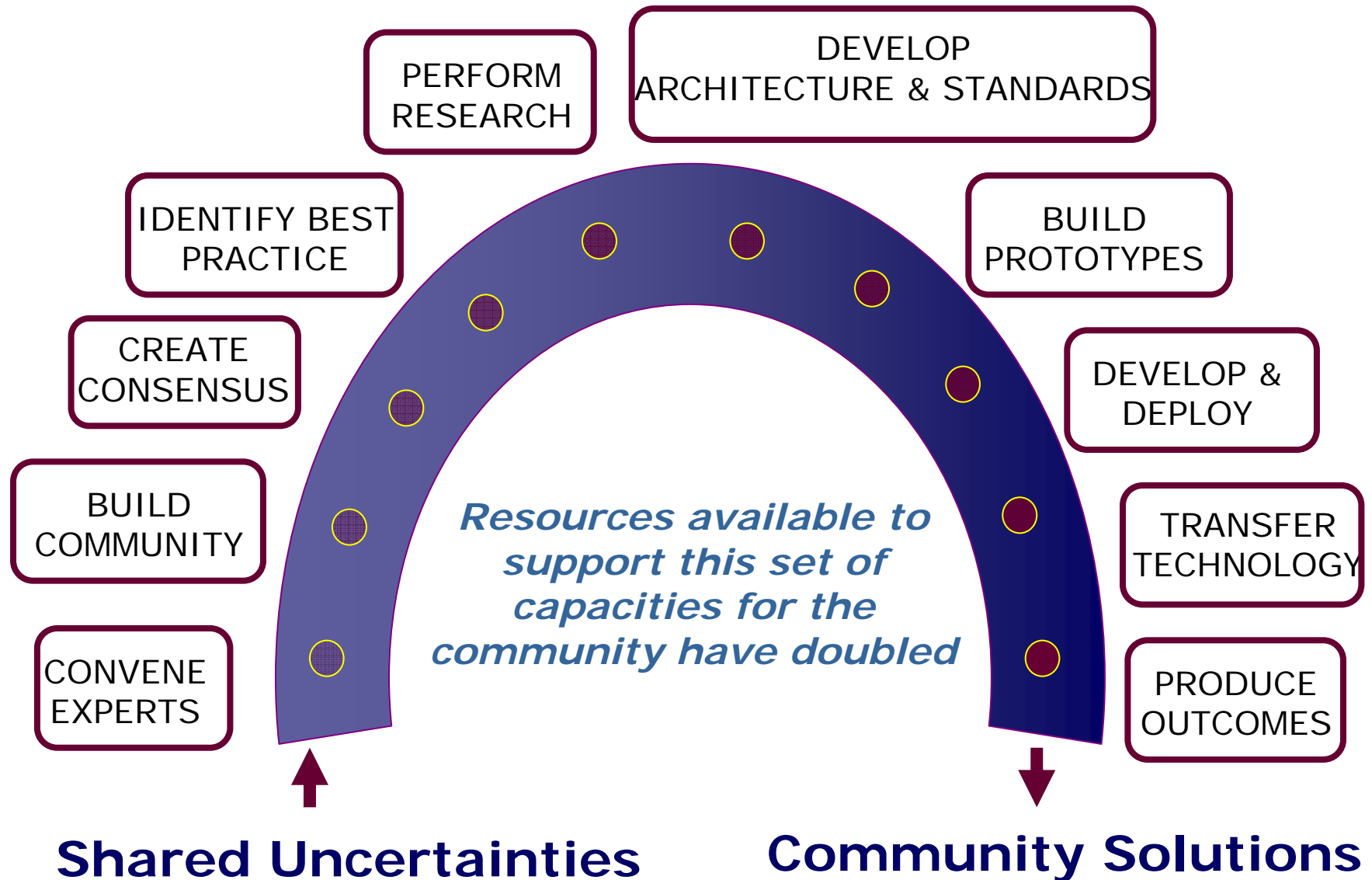


Measurements  
& Behaviors



Supporting  
New Modes  
of Research,  
Teaching &  
Learning

# Programs & Research: Combined Capacities







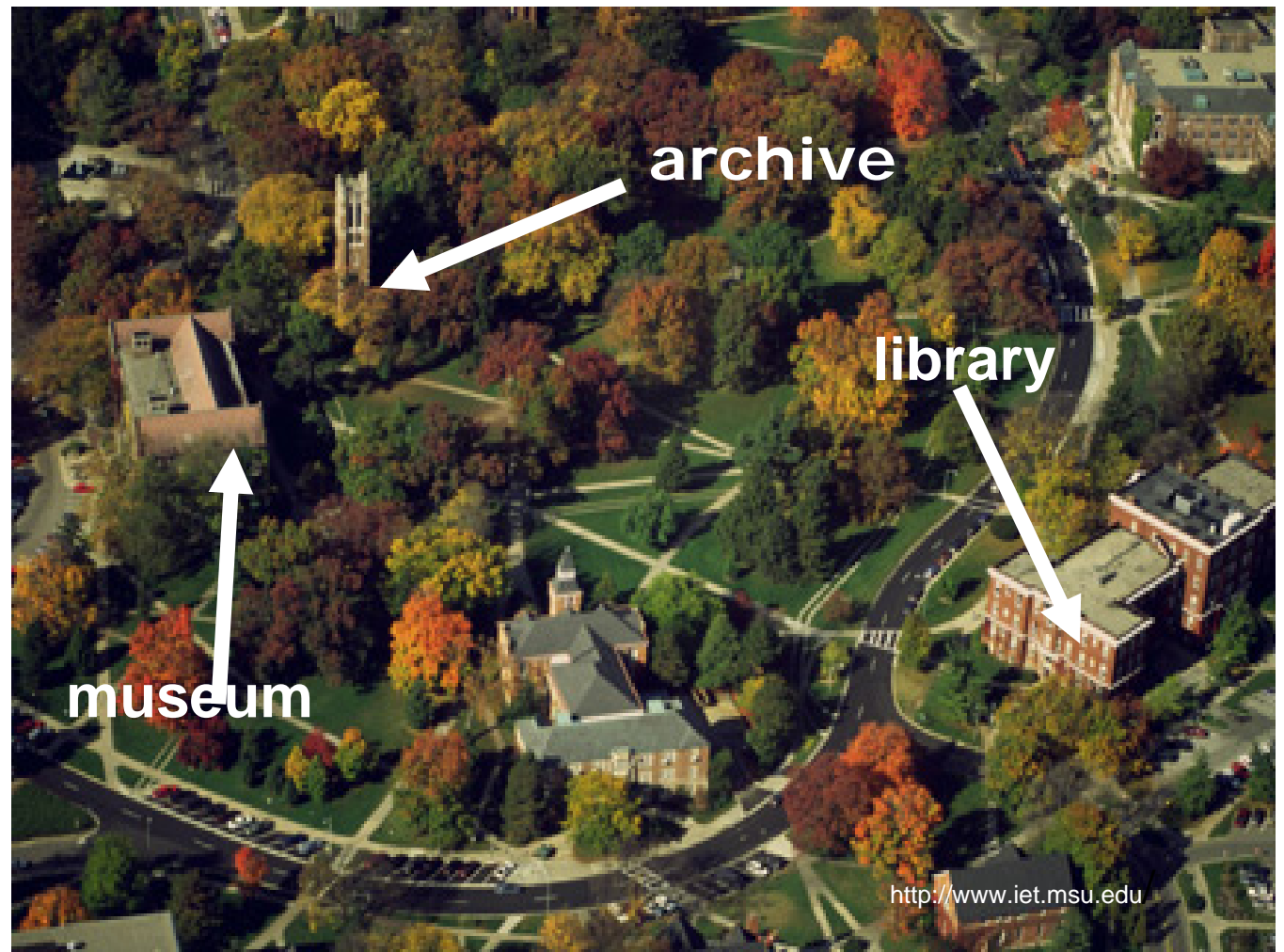
# The RLG Programs approach:

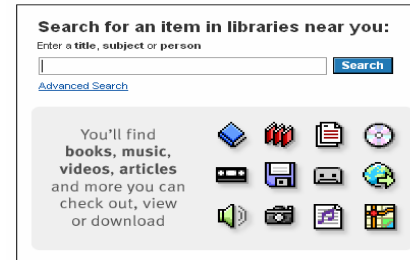
- *Assess the landscape:* capture community priorities and trends through face-to-face encounters, working groups, interviews and data analysis
  - Group meetings, conference presentations, white papers
- *Strategize:* determine where community investment is most likely to contribute near-term value
  - “Calls to action”, internal and external advisory groups, participation in internal product planning
- *Collaborate:* work with partners to implement change at the local, group and global level
  - Formulate policies, prototype services, partner with external agencies to leverage collective assets



# LAM Relationships

Hypothetical  
University

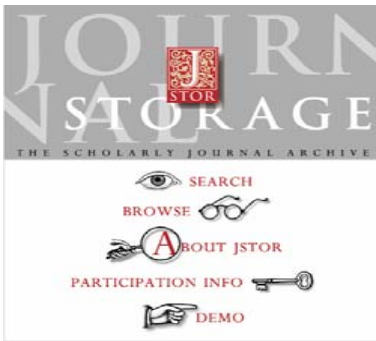




Stand on the shoulders of giants

[Google Home](#) - [About Google](#) - [About Google Scholar](#)

©2007 Google



# Understand end-user behaviors



## Changing Metadata Creation Processes

Baseline understanding of metadata practices – so many standards to choose from

		Response Percent	Response Count
CDWA		6.3%	5
CDWA Lite		3.8%	3
Darwin Core		2.5%	2
DDI		1.3%	1
Dublin Core Qualified		29.1%	23
Dublin Core Unqualified		26.6%	21
EAD		41.8%	33
FGDC		5.1%	4
<b>MARC</b>		<b>63.3%</b>	50
MODS		19.0%	15
SPECTRUM		2.5%	2
TEI		12.7%	10
VRA Core		21.5%	17
Other: Name below		31.7%	25

## Sun, Yat-sen 1866-1925



## Leveraging vocabularies for discovery

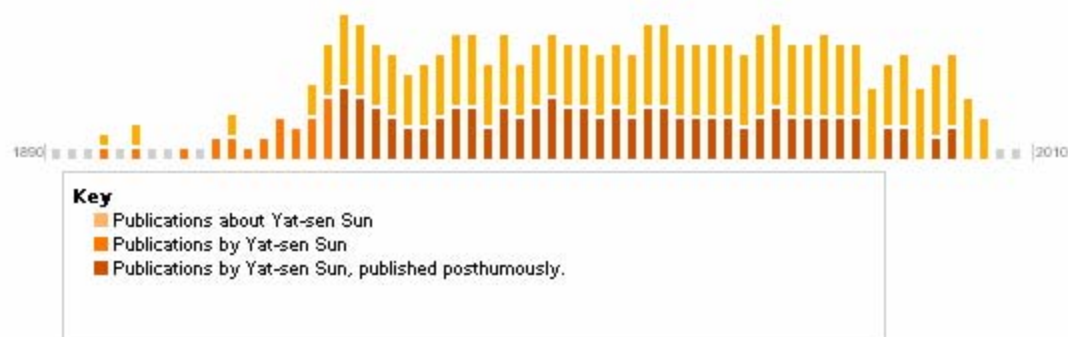
### Overview

**Works:** 3,286 works in 4,536 publications in 25 languages and 42,872 library holdings

**Subject Headings:** [Presidents—China](#) [Revolutionaries—China](#) [China—Presidents](#)

**Classifications:** [ds777](#), [951.0410924](#)

### Publication Timeline



### Most widely held works about Yat-sen Sun

- **Sun Yat-sen and the origins of the Chinese revolution** by Harold Z Schiffrin
- **Sun Yat-sen; his life and its meaning; a critical biography** by Lyon Sharran
- **Sun Yat-sen, reluctant revolutionary** by Harold Z Schiffrin
- **Sun Yat-sen, frustrated patriot** by C. Martin Wilbur
- **The Japanese and Sun Yat-sen** by Marius B Jansen

more ▼

### Most widely held works by Yat-sen Sun

**The three principles of the people** by Yat-sen Sun

192 editions published between 1924 and 2003 in 11 languages and held by 1,148 libraries worldwide



### Alternative Names

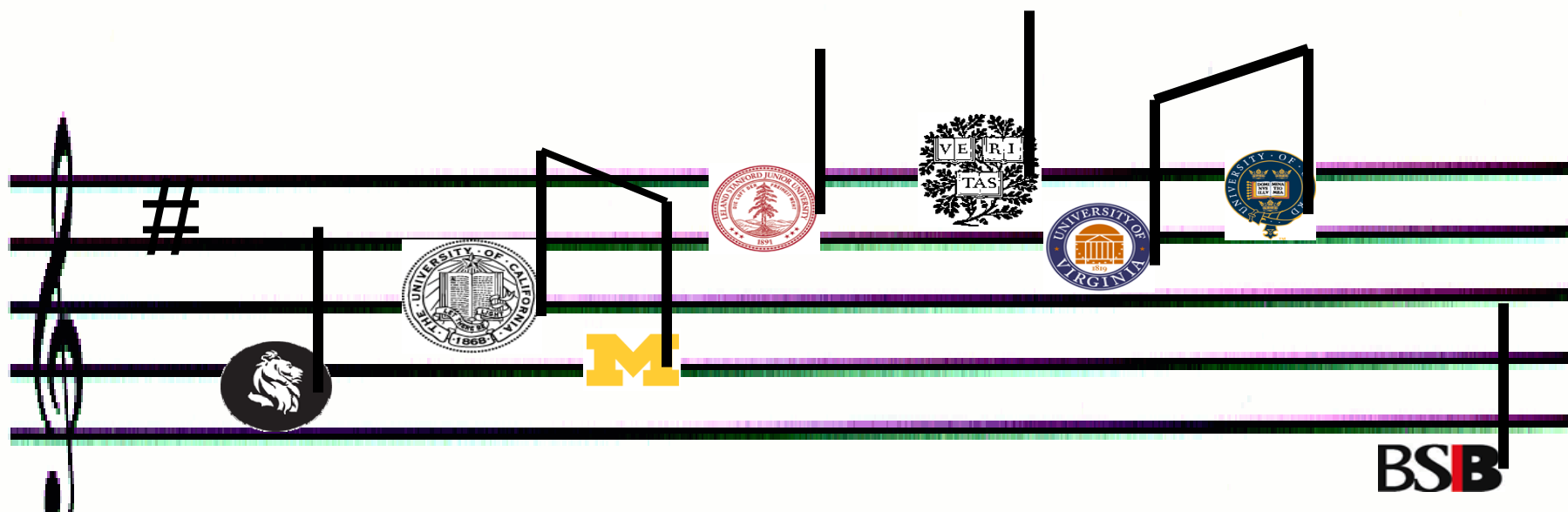
Sun, Wen 1866-1925  
 Sun, I-hsien 1866-1925  
 Sun, Zhongshan 1866-1925  
 Sun, Chung-shan 1866-1925  
 Nakayama, Kikori 1866-1925  
 Son, Bun 1866-1925  
 Sun', Ven' 1866-1925  
 Sun', I'A't-Sen 1866-1925  
 Sūn, Yāt Sīn 1866-1925  
 Yātsin, Sun 1866-1925  
 Son, Mun 1866-1925  
 Son, Chūzan 1866-1925  
 Sun, Yatsen 1866-1925  
 Sun', I'A'tsen 1866-1925  
 Sunzhongshan 1866-1925  
 Son, Issen 1866-1925  
 Tôn, Dật Tiên 1866-1925  
 Tôn, Trung Sơn 1866-1925  
 Sun, Jat Sen 1866-1925  
 Chvan', Yak' Chan 1866-1925  
 Tôn, Văn 1866-1925  
 孙中山  
 孫逸仙  
 孫逸仙  
 孫逸仙  
 孫文  
 孫逸仙  
 朱正  
 孫中山  
 吳景雲  
 孫文





# Harmonizing digitization

- Expectations for mass digitization partnerships
- Bring special collections into large-scale digitization milieu
- Business intelligence to inform digitization decisions & use of digitized content



# Public-Private Mass Digitization

## Appearance

- They are non-exclusive deals
- The private partner bears all the costs
- Institutions are free to serve the content to users
- They are only limited term deals

## Reality

Exclusive “limited” to digital copies, but who will rescan?

Participating libraries bear staff and opportunity costs

Who are “our users”? Need to aggregate with content from other projects & partners

Terms may be limited but restrictions aren’t

# Shifting Gears, Getting into 'the Flow'

## Shifting Gears: Gearing Up to Get into the Flow

The essay, like the forum, focuses on digitization and related processes, but intentionally does not encompass technical specifications for various formats, born digital materials, nor rights issues (which warrant similar essays for each topic). It intends to be provocative. Not all of the ideas presented here will apply to a particular situation, but hopefully they will stimulate consideration of appropriate ways to move forward.

Special collections are stuck in an eddy, while the mass of digitized books drift by in the current of the mainstream. We need to jump into the flow or risk being left high and dry.

### 1. Access vs. preservation—Access wins!

Many of our digital initiatives have stressed the importance of preservation, leaving access as an afterthought (the idea being if you capture preservation-quality, you can always derive an access copy). In reality, due to the very special nature of these often unique materials, we will always preserve the originals to the best of our ability. In light of recent programs for the mass digitization of books, if special collections and their funding continue to be marginalized, our administrations may not keep us around to attend to the originals.

In the past, we've soothed our doubts by repeating the mantra, "we'll only get one chance to do it, so it's got to be done right." Experience has shown that that is not in fact the case. Often we do go back when the technology improves or when we better understand our users' needs. We need to put on our helmets now and go for the biggest bang for the buck in terms of access.



# Shared Print Collection Management

We live in a world where:

- more and more information is either born digital or being reborn digitally
- libraries are filled to the brim with print collections
- use of legacy print collections is declining while total print production continues to grow
- offsite storage is also filling up with print materials (with some new acquisitions going directly into storage)
- it may be cheaper to build a new storage pod than it is to weed collections stored in the old storage pod
- many libraries are buying and storing the same titles
- no one has an accurate idea of what anyone else is storing
- or of the physical condition of stored material

Got collaboration?

# Shared Print Collection Management

## Recent and upcoming activities

1. Develop data requirements and policy framework for distributed network of shared print repositories (with NAST)
2. “Last copies” analysis of ARL collections
3. Shared print collections summit – Nov 12-13
4. Apply what is learned from NAST and other efforts to SHARES environment

No. of facilities	Aggregate capacity	Current occupancy (vol. equivalents)
1	100	100
2	200	200
3	300	300
4	400	400
5	500	500
6	600	600
7	700	700
8	800	800
9	900	900
10	1000	1000
11	1100	1100
12	1200	1200
13	1300	1300
14	1400	1400
15	1500	1500
16	1600	1600
17	1700	1700
18	1800	1800
19	1900	1900
20	2000	2000
21	2100	2100
22	2200	2200
23	2300	2300
24	2400	2400
25	2500	2500
26	2600	2600
27	2700	2700
28	2800	2800
29	2900	2900
30	3000	3000
31	3100	3100
32	3200	3200
33	3300	3300
34	3400	3400
35	3500	3500
36	3600	3600
37	3700	3700
38	3800	3800
39	3900	3900
40	4000	4000
41	4100	4100
42	4200	4200
43	4300	4300
44	4400	4400
45	4500	4500
46	4600	4600
47	4700	4700
48	4800	4800
49	4900	4900
50	5000	5000
51	5100	5100
52	5200	5200
53	5300	5300
54	5400	5400
55	5500	5500
56	5600	5600
57	5700	5700
58	5800	5800
59	5900	5900
60	6000	6000
61	6100	6100
62	6200	6200
63	6300	6300
64	6400	6400
65	6500	6500
66	6600	6600
67	6700	6700
68	6800	6800
69	6900	6900
70	7000	7000
71	7100	7100
72	7200	7200
73	7300	7300
74	7400	7400
75	7500	7500
76	7600	7600
77	7700	7700
78	7800	7800
79	7900	7900
80	8000	8000
81	8100	8100
82	8200	8200
83	8300	8300
84	8400	8400
85	8500	8500
86	8600	8600
87	8700	8700
88	8800	8800
89	8900	8900
90	9000	9000
91	9100	9100
92	9200	9200
93	9300	9300
94	9400	9400
95	9500	9500
96	9600	9600
97	9700	9700
98	9800	9800
99	9900	9900
100	10000	10000

## System-wide lib

5 facilities  
5.9M vols.  
47% full

9 facilities  
18.4M vols.  
69% full

**5 facilities**  
**21.2M vols.**  
**41% full**

14 facilities  
17M vols.  
78% full

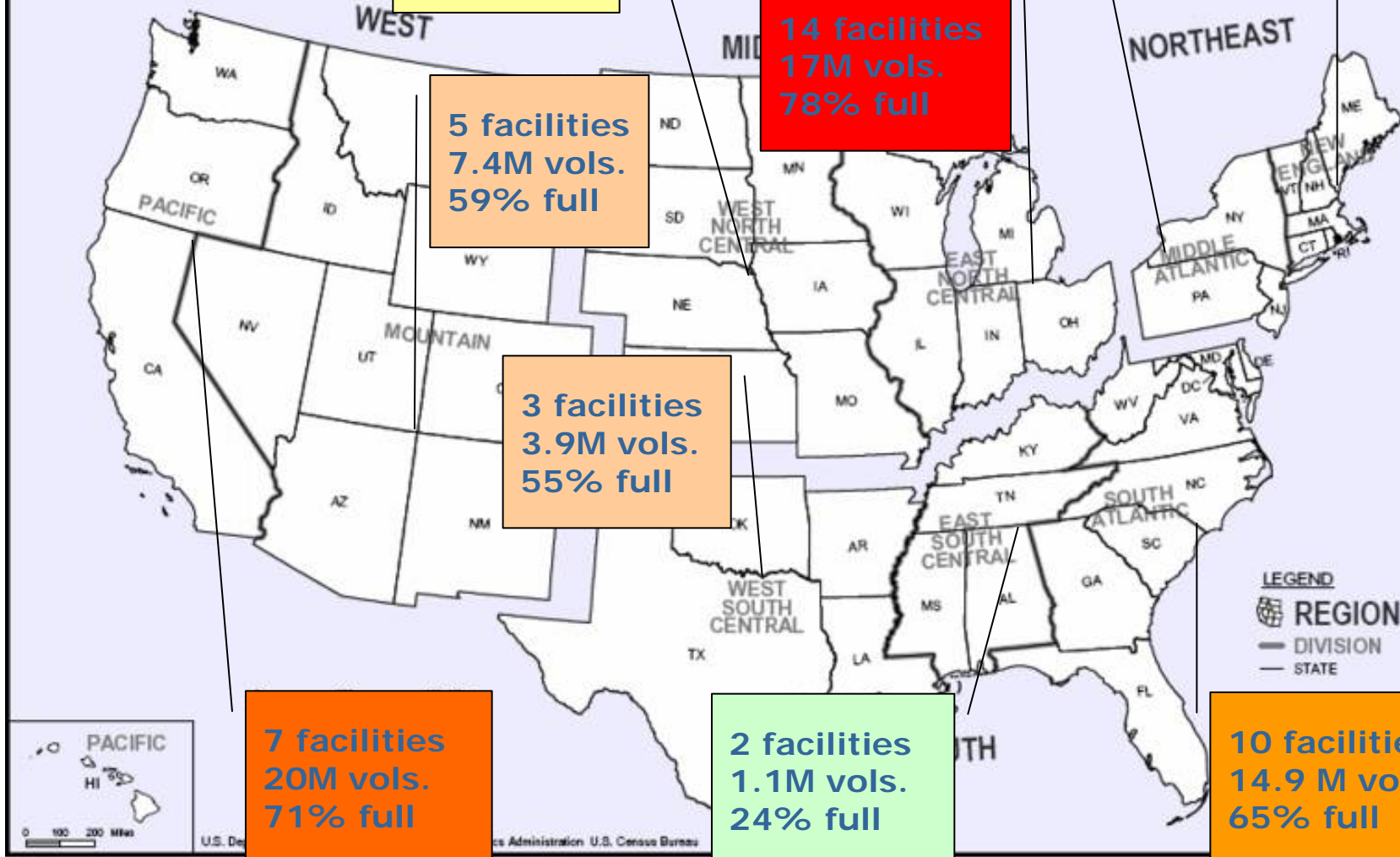
**5 facilities  
7.4M vols.  
59% full**

**3 facilities**  
**3.9M vols.**  
**55% full**

7 facilities  
20M vols.  
71% full

2 facilities  
1.1M vols.  
24% full

10 facilities  
14.9 M vols.  
65% full



# Shared infrastructure, data-mining activities

- eContent Synchronization
- Registry of Copyright Evidence
- Investigating ILL use patterns
- Comparison of collections of 4 NYC museums



# Collaborative Collection Management

- [RLG Collections Summit](#) (November, 2007)  
Host: University of Pennsylvania
- Invitational meeting will explore cultural, technological and organizational obstacles to the cooperative solution of 4 key objectives
  - Retention of last copies
  - Ensuring back-up to online access
  - Expanding coverage, reducing duplication
  - Shared access to low-use collections
- Collections and Access managers from 34 research institutions in North America, the UK and Ireland
- Outcomes: recommended strategies at the local, group, and network levels; concrete next steps and “assignments”

# “Shared access to low-use collections”

Approaches	Obstacles	Measures of Success	
<ul style="list-style-type: none"> <li>physical consolidation</li> <li>‘virtual’ consolidation</li> </ul>	<ul style="list-style-type: none"> <li>loss of ownership</li> <li>loss of browsing</li> </ul>	<b>Collections</b> <ul style="list-style-type: none"> <li>increased coverage, reduced cost</li> </ul>	<b>Access</b> <ul style="list-style-type: none"> <li>direct, unmediated delivery</li> </ul>
<b>Solutions</b> <p>Strategies</p> <ul style="list-style-type: none"> <li>fully disclose local and group storage collections and services</li> <li>implement single-copy policies to de-duplicate at ingest</li> <li>monitor system-wide usage to establish optimal overlap</li> </ul>			
<b>Local</b> <ul style="list-style-type: none"> <li>policies</li> </ul>	<b>Group</b> <ul style="list-style-type: none"> <li>coordination</li> </ul>	<b>Global / Network</b> <ul style="list-style-type: none"> <li>registries</li> </ul>	