

Improving the Conversation: OCLC's New Governance Structure

Presented at the Canadian Library Association

2 June 2010

George Needham

Vice President, Global and Regional Councils



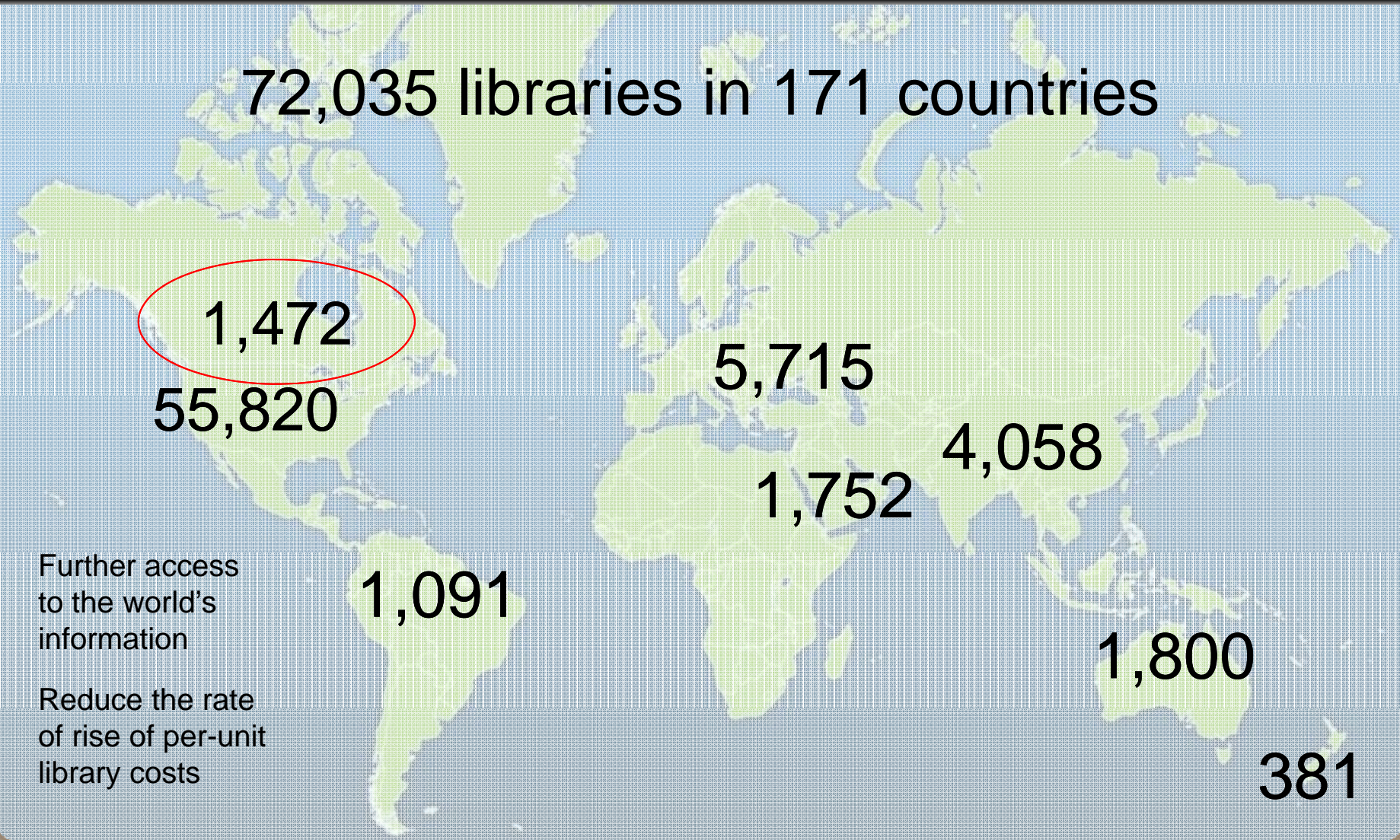
OCLC™

The world's libraries.
Connected.

The OCLC Cooperative



72,035 libraries in 171 countries



Further access
to the world's
information

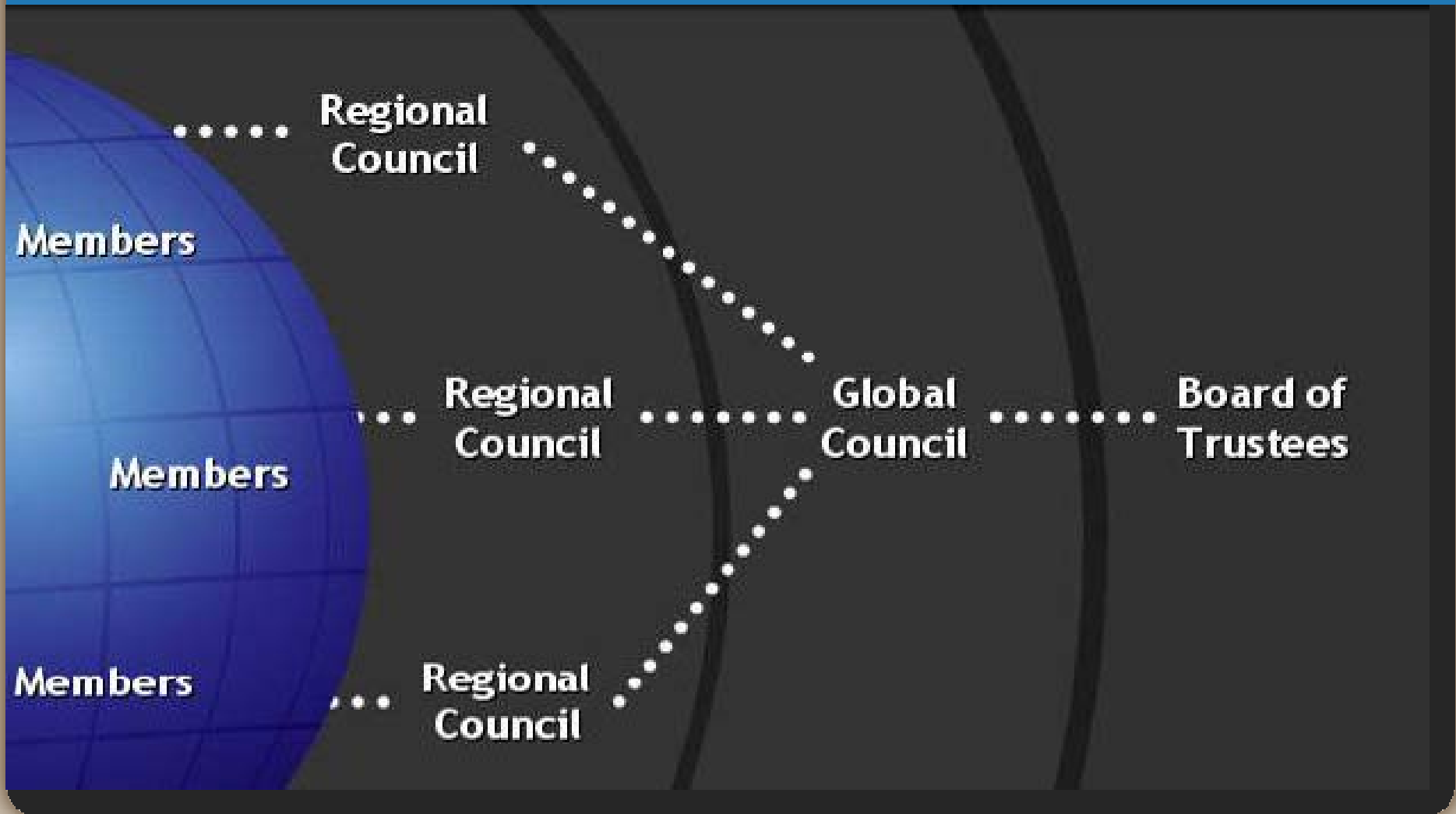
Reduce the rate
of rise of per-unit
library costs

Background



- Original governance structure, 1977
- Revised, 2000-2001
- New task force appointed and reports, 2007
- New structure recommended, 2008
- New structure approved, 2009

Into the details...



Regional Councils



Asia Pacific Regional Council meeting, 7-8 September 2009, Beijing

Regional Councils



Americas Regional Council meeting, 15 January 2010, Boston

Regional Councils



EMEA Regional Council meeting, 24-25 February 2010, Leiden NL

Global Council



Global Council's first meeting, April 19-22, 2010, Dublin, Ohio

Global Council



Jan Ison
Global Council
President



Jennifer Younger
Global Council
Vice President



Berndt Dugall
Incoming Global Council
Vice President

OCLC Canada Advisory Council



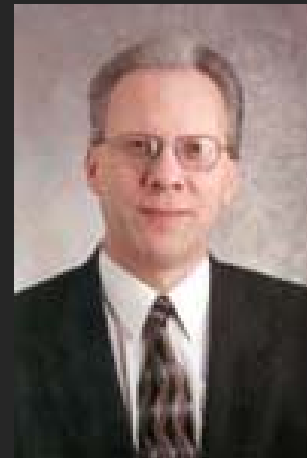
Board of Trustees



Membership Committee



Trustee members, l-to-r:
Bruce Newell, Chair
Bob Seal
Sandy Yee



Council members, l-to-r:
Vic Elliott
Loretta Parham
Gregg Silvis

Protocols



MEMBERSHIP AND GOVERNANCE PROTOCOLS

Approved by OCLC Members Council, 10 February 2009

Ratified by OCLC Board of Trustees, 20 April 2009

Replacement Article II approved by Members Council, 19 May 2009

Ratified by Board of Trustees, 8 June 2009

I. PREAMBLE AND DEFINITIONS

This document sets forth the following protocols for membership in and for the governance of the OCLC cooperative. It is authorized by Article IV and succeeding passages of the OCLC Code of Regulations.

For purposes of this document, the following definitions shall apply:

- **Memory institution:** A library, museum, archives, historical society, or similar institution.
- **OCLC:** Founded in 1967, OCLC Online Computer Library Center is a nonprofit, membership, computer library service and research organization dedicated to the public purposes of furthering access to the world's information and reducing the rate of rise of library costs.
- **OCLC cooperative or Cooperative:** See OCLC
- **Corporation:** See OCLC

http://www.oclc.org/us/en/membership/membership_protocols.pdf

Membership definition



II. MEMBERS

Article IV of the OCLC Code of Regulations states, “Members shall be those entities that meet the minimum but continuing threshold of engagement with OCLC, as set forth in OCLC’s Membership and Governance Protocols.” Article IV, Section A of the Code empowers the Membership Committee to develop the definition of Membership for the review and approval of the Global Council and the Board of Trustees.

Any library or other memory institution that embraces the OCLC values of collaboration and sharing is welcome. Institutions worldwide become members of OCLC by contractually agreeing to contribute intellectual content or share resources. Our cooperative is strengthened by our membership’s diversity, such as geographical, institutional type, or size.

OCLC members are united by similar and complementary content and processes. They are connected through mutual purpose, shared enterprise, and the creation, sharing, and stewardship of metadata, content, and other resources. For example, WorldCat is maintained through the collaborative efforts of OCLC members. Members respect the intellectual property rights of other members and the cooperative.

http://www.oclc.org/us/en/membership/membership_protocols.pdf

Qualifications



OCLC members share in a variety of ways, such as (but not limited by):

- Contributing metadata;
- Sharing holdings information;
- Sharing staff resources and expertise, such as in a reference cooperative;
- Making digital content available to other members;
- Sharing materials using OCLC services; or by
- Contributing to OCLC in other ways (in the future appended to this list) indicating an agreed upon significant level of engagement with the cooperative.

http://www.oclc.org/us/en/membership/membership_protocols.pdf

Why membership is so important now



- Changes in network relationship
- Alternate service providers
- Library budgets

So what are we doing to revitalize membership?



- New advisory groups
- New newsletter, *OCLC Cooperative eNews*
- Mashathons
- More outreach to library schools
- More webinars, including Global and Regional Council-specific events

More on revitalizing...



- More communication from Board President and Council chairs
- Be a little less “corporate,” a little more “co-op”
- Use the word “member” intentionally

Questions?



Thanks for being here!

George Needham

1-800-848-5878, ext. 5173

needhamg@oclc.org