



Create



Share

# Online Cataloging



Search

# Connexion

Cooperative cataloging with a trusted partner



**OCLC**<sup>®</sup>

The world's libraries.  
Connected.™

**Connexion<sup>®</sup>** is a powerful yet easy-to-use tool that lets you perform original and copy cataloging with WorldCat<sup>®</sup>, the world's most comprehensive bibliographic database and the core of the OCLC cooperative. Catalog in Connexion and you contribute and receive quality records that help information seekers find what they need quickly. Connexion gives you a choice of interface: an easy-to-learn Web interface and a Windows-based client interface.

## Behind it, the power of WorldCat

From basic copy cataloging to full original cataloging, Connexion integrates your cataloging with WorldCat, the world's most comprehensive database of bibliographic and library ownership information. WorldCat saves catalogers time by aggregating knowledge and eliminating duplication of effort. Its encyclopedic coverage lets the average OCLC library copy-catalog 95 percent of its resources.

WorldCat includes records for more than 400 languages, written in Arabic, Bengali, Chinese, Cyrillic, Devanagari, Greek, Hebrew, Japanese, Korean, Latin, Tamil and Thai scripts. Each script includes multiple languages. For example: the Arabic script includes Arabic, Persian and Urdu; the Cyrillic script includes Russian, Ukrainian and Bulgarian; and the Latin script includes English, French, Spanish and German.

Accurate holdings information you maintain with Connexion helps Web searchers everywhere find your library and the things you own through WorldCat.org and the WorldCat Local service. WorldCat holdings also help you to analyze your collection and compare it to others, using the WorldCat Collection Analysis™ service and help thousands of libraries keep materials moving through the WorldCat Resource Sharing™ system.

## Works with your existing process

Different libraries work in different ways, so Connexion adapts to your workflow and specific needs. You can work in either of two customizable interfaces: an easily-accessed Web browser, or a Windows-based client with powerful features, including macros. Interactive tutorials and context-sensitive help make both interfaces very easy to learn and use.

Connexion is a complete suite of tools and services backed by OCLC's 35+ years of cataloging experience. Its enhanced features provide unparalleled flexibility for libraries and other allied institutions. Connexion lets you create and edit quality bibliographic and authority records, then share them with the entire OCLC cooperative, which benefits libraries and library users around the world.

## The timesaving features you want

Whether you are searching WorldCat, editing records or exporting records to your local system, Connexion can help. Catalogers using Connexion find it to be a powerful, flexible suite of tools and services.

### Searching

**Flexible searching** Use derived, numeric and phrase options in more than 90 indexes of Arabic, Bengali, Chinese, Cyrillic, Devanagari, Greek, Hebrew, Japanese, Korean, Latin, Tamil and Thai script data. Drop-down menus list available indexes, eliminating the need to memorize index labels. Experts can search via a command-line using index labels and search strings.

**Fast access to institutional names** In Connexion's holdings and cataloging source (040 field) displays, simply hold your mouse pointer over an institutional symbol to view its full name.

### Creating and editing

**Constant data** Store and apply custom templates consisting of text or data values to ensure speed and consistency in record editing.

**Dynamic authority control** Search headings in a bibliographic record with a single click, and link headings to associated authority records. Bibliographic records are automatically updated if authority records are changed.

**Save File** Save records in process, and search your save file using various indexes. Set a status on your in-process records to locate them quickly.

**Label printing** View, edit and print labels directly from displayed bibliographic records.

**Record creation** Create records in one of three ways: (1) derive a new record from an existing record and modify content; (2) enter content for each field in a blank workform; or (3) begin with fields extracted or generated from an electronic resource.

### Downloading

**Record export options** Download records to your local system using one of several methods. For the latest information on schemas and character sets supported, visit: [www.oclc.org/connexion/about/features/export/](http://www.oclc.org/connexion/about/features/export/).

## A choice of interface

You can pick the interface that best meets your needs. The Web-based browser is easy to learn and use, and the Windows-based client provides additional power and flexibility. Some institutions use both to suit their cataloging staff's proficiencies. To help you choose the interface(s) that best meet(s) your needs, see [www.oclc.org/connexion/interface/](http://www.oclc.org/connexion/interface/) for more information.

### Browser

With no software to install and always up-to-date features, the browser ensures maintenance-free reliability and accessibility from any Web-enabled workstation. There are no commands to learn, and embedded tips guide less-experienced users. Most actions have preset keyboard shortcuts.

**Choose the browser if:** You want a browser-based interface that requires no special software to install and accessibility from any Web-enabled PC.

### Client

The Windows software features productivity-boosting enhancements such as macros, complete keyboard customization, batch processing and offline functionality. The Connexion client supports Arabic, Bengali, Chinese, Cyrillic, Devanagari, Greek, Hebrew, Japanese, Korean, Latin, Tamil and Thai scripts with interface language choices of Chinese (Simplified), Chinese (Traditional), English, German, Japanese, Korean and Spanish.

**Choose the client if:** You want a Windows-based interface. You must download and install the Connexion client software.

## Expand with powerful add-on services

Add other OCLC services, including WebDewey®, the Web-based version of the Dewey® Decimal Classification® system; the OCLC Digital Archive™, which offers preservation, management and secure sharing of your digital collections; and WorldCat Selection™, which allows selectors to view records from multiple sources in one system. These services appear as additional tabs within the Connexion browser interface. Use the Connexion client interface to add digital items to CONTENTdm collections during the cataloging process.

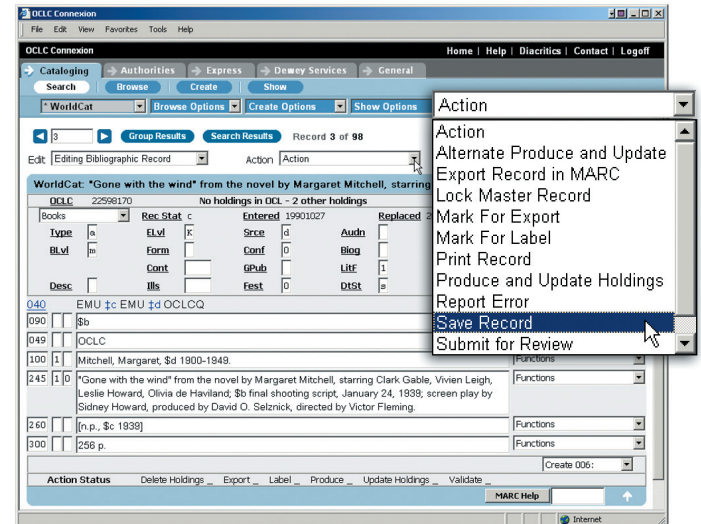
## Local holdings maintenance

Maintain local holdings in the MARC 21 Format for Holdings Data using the Connexion browser interface.

## A Closer Look:

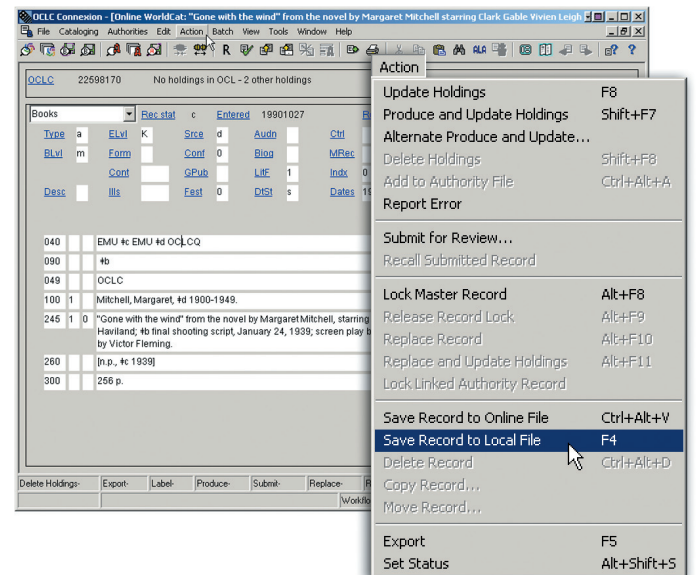
### It's easy to get started

You can get going on Connexion quickly with little training—tutorials and built-in help let you learn as you go. Consistent presentation lets you move smoothly between the Connexion browser and client.



### Connexion browser: Simple Web interface

Tabbed and drop-down navigation make quick work of locating the cataloging functionality you want. Field-level functions provide additional editing options.



### Connexion client:

#### Easy-to-customize Windows software

Efficiency is maximized with keyboard shortcuts and function-specific icons that let you see available actions at a glance.

Learn more at  
[www.oclc.org/connexion](http://www.oclc.org/connexion)

## Benefits

Get more done with less by minimizing the time spent creating and maintaining catalog records

Increase cataloging efficiency through cooperation and by using the latest cataloging tools and technology.

## Features

Options for creating, viewing, updating and exporting records

Handles many resource formats, plus copy and original cataloging

Search WorldCat and the Authority File for quick access to records you need

Choice of Web-based browser or Windows-based client interfaces so that you can pick the interface that best meets your needs

Adapts to your institution's workflow

Authority linking that automatically updates WorldCat master records when authority headings change

Extraction of metadata within electronic resources that helps build catalog records

Online documentation, tutorials and context-sensitive help

## Requirements

**Browser:** Current-generation Web browser and the OCLC Cataloging Label Program 1.22, if printing labels

**Client:** Windows 2000, XP or Vista

## Web Resources

<http://www.oclc.org/connexion/support>  
Connexion support materials, including documentation and training materials

<http://connexion.oclc.org/>  
Connexion browser logon

<http://www.oclc.org/connexion/>  
Connexion client download

<http://www.oclc.org/connexion/about/features/nonlatin/>  
Connexion client non-Latin script cataloging features

## Related Services

**WorldCat Cataloging Partners™** further automates cataloging by providing full OCLC-MARC records for materials you order through your materials vendors.

**Contract Cataloging™** offers contract cataloging of materials in all formats and many languages.

**CONTENTdm®** now includes Connexion digital import feature. Now you can attach digital files to your WorldCat records and your CONTENTdm collections using the Connexion client.

**Bibliographic Record Notification™** eases cataloging by automatically delivering upgraded OCLC-MARC records.

**eSerials Holdings™** adds your electronic serials holdings to WorldCat in an efficient and cost-effective manner.

**Terminologies Service™** provides access to multiple controlled vocabularies, allowing easy copying and pasting of correctly tagged headings into Connexion records.

For detailed information on Connexion, including recent enhancements, visit the OCLC Web site. [www.oclc.org/connexion/](http://www.oclc.org/connexion/)

For pricing information and getting started with Connexion, call OCLC Library Services at 1-800-848-5878 or contact your OCLC regional service provider directly. [www.oclc.org/contacts/regional/](http://www.oclc.org/contacts/regional/)

## WorldCat records now on the Web sites people go to first for information

With more than 90 million records and a new record added every 10 seconds, WorldCat is the world's most comprehensive bibliographic database. And with WorldCat.org and the Open WorldCat program, its online catalog records and holdings information are now discoverable by Web users everywhere, making library resources more visible. Learn more at [www.oclc.org/worldcat/](http://www.oclc.org/worldcat/).



OCLC helps libraries in more than 100 countries. Please contact us to learn more about OCLC in your part of the world.

### Asia Pacific

T +1-614-764-6341  
F +1-614-764-4331  
E [AsiaPacific@oclc.org](mailto:AsiaPacific@oclc.org)

### Australia

T 1300 260 795 (Local call within Australia)  
+61-(0)3-9929 0800  
F +61-(0)3-9929 0801  
E [australia@oclc.org](mailto:australia@oclc.org)

### Canada

T +1-450-656-8955  
1-888-658-6583  
F +1-450-618-8029  
E [canada@oclc.org](mailto:canada@oclc.org)

### China

T +86-10-8260-7931  
F +86-10-8260-7539  
E [china@oclc.org](mailto:china@oclc.org)

### France

T +33-(0)1-55 02 14 80  
F +33-(0)1-47 93 50 13  
E [france@oclc.org](mailto:france@oclc.org)

### Germany

T +49-(0)89-613 08 300  
F +49-(0)89-613 08 399  
E [deutschland@oclc.org](mailto:deutschland@oclc.org)

### Latin America & the Caribbean

T +1-614-764-6301  
F +1-614-764-1026  
E [america\\_latina@oclc.org](mailto:america_latina@oclc.org)

### Mexico

T +52-55-5687-3307  
F +52-55-5523-9212  
E [mexico@oclc.org](mailto:mexico@oclc.org)

### Netherlands

T +31-(0)71-524 65 00  
F +31-(0)71-522 31 19  
E [nederland@oclc.org](mailto:nederland@oclc.org)

### Switzerland

T +41-(0)61-378 80 70  
F +41-(0)61-378 80 79  
E [schweiz@oclc.org](mailto:schweiz@oclc.org)

### United Kingdom & Ireland

T +44-(0)121-456 46 56  
F +44-(0)121-456 46 80  
E [uk@oclc.org](mailto:uk@oclc.org)

### United States

T +1-614-764-6000  
800-848-5878  
(US + Canada only)  
F +1-614-764-6096  
E [usa@oclc.org](mailto:usa@oclc.org)

[www.oclc.org](http://www.oclc.org)