

Localize

Export

Search

Simple Copy
Cataloging

CatExpress

Use the power of WorldCat for fast, efficient copy cataloging



OCLC[™]

The world's libraries.
Connected.

CatExpress® is a fast and easy Web-based copy cataloging solution. Its user-friendly interface was designed so your staff, new or veteran, can get more done, faster. And CatExpress gives them access to WorldCat, the world's most comprehensive bibliographic database.

Copy cataloging is a key activity for any library. But it can be tedious for library veterans and intimidating for staff with less experience. CatExpress is the perfect solution, balancing ease of use with the power of WorldCat®, the most comprehensive database of bibliographic records available. Simply search for and retrieve records for copy cataloging from WorldCat and export them to your local system.

CatExpress helps you put materials on shelves faster than ever before. It requires very little training, and because it's Web-based, there's no software to install or maintain. OCLC provides detailed online tutorials and user FAQs to make using it even easier.

Additionally, CatExpress provides the power of Dewey® through the Web as an add-on service. This option gives you access to an enhanced version of the 22nd edition of the Dewey Decimal Classification® (DDC®) database or to the 14th abridged edition of the DDC database. When you add this option, a new tab appears in CatExpress and the WebDewey® service is available with a single click.

Just six simple steps

You can use CatExpress with little or no cataloging experience—all you need is an Internet-enabled PC and a current Web browser. CatExpress delivers high-quality, copy cataloging records in six basic steps:

1. **Log on** at <http://catexpress.oclc.org/>
2. **Find** a matching record in WorldCat
3. **Add** local data as necessary
4. **Click** the "Save to Catalog" button to attach your holdings
5. **Log off**
6. **Download** your records

You also can use CatExpress to print spine and pocket labels for the items you add to your collection.

Accuracy that saves you time

This is where the richness of the WorldCat database really pays off. With more than 95 million records for materials in all formats, from books to DVDs to eJournals and more, WorldCat provides remarkably inclusive search results. More than 9,000 libraries around the world contribute to WorldCat—some are your neighbors, others are a continent away. Many contribute records for the very materials you hope to match.

Subscription levels: it's your choice

CatExpress is available as a subscription-based service for individual libraries or groups. Annual subscription pricing for individual libraries is based on the number of titles you expect to catalog—from 250 to 7,000 titles annually. If you have heavier copy cataloging needs, you may consider Connexion®, OCLC's integrated cataloging service.

Records delivered with your new materials

An additional option for CatExpress users is to receive OCLC-MARC records for materials you order through your materials vendors through WorldCat Cataloging Partners. It also sets your library's holdings automatically in WorldCat.

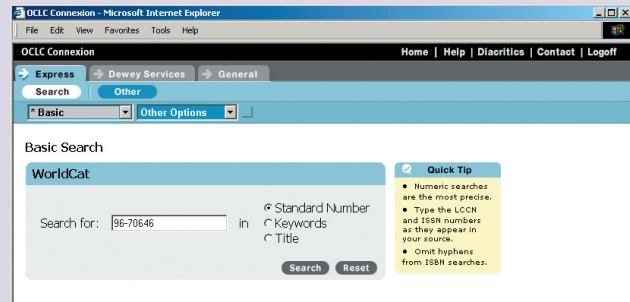
This option is based on your CatExpress subscription and offers three service levels. Additionally, the total number of records your library receives through CatExpress and WorldCat Cataloging Partners combined count toward your CatExpress subscription level. This easy-to-use, cost-effective option merges the functionality of the two services, offering records from both sources.

Automatic record upgrades

Another option that you can add on to CatExpress is the Bibliographic Notification service. Every day, it compares all upgraded OCLC MARC records to the records your library has holdings attached to, and then sends you upgraded records based on a detailed profile that tells what updates are important to you. You receive new records by Electronic Data Exchange (EDX) or download them from OCLC Product Services Web, then load the upgraded records into your system. Reports summarizing the type of upgrades and quantity of records being delivered are also available.

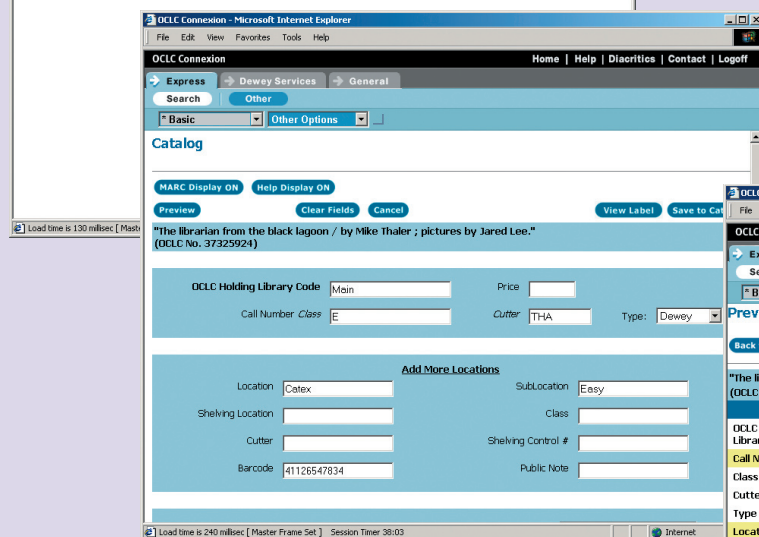
A Closer Look: Designed for your needs

CatExpress is immediately accessible because it runs entirely through a standard Web browser. Once you've logged in, all buttons, choices and controls are contained in the browser window.



Perform a basic search

Begin by searching for a record by standard number, keywords or title. Contextual Quick Tips help answer questions fast. Then sort your result sets by title, author or date.

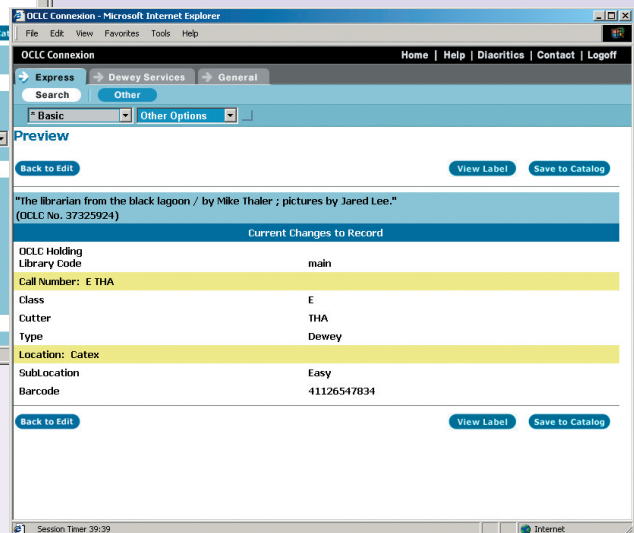


Add your information to the record

This editing screen shows how quickly and easily you can add local information to the record, such as call numbers, bar code numbers and local notes.

Preview your changes

The Preview page lets you do just that—make sure your changes are accurate. Then simply save to catalog, or return to editing. You can also view the resulting label for the item.



Success stories

Librarians rave about the speed and value of CatExpress

Libraries vary in shape, size and purpose. Some are independent, serving specialized users; others are part of large systems attracting broad audiences with myriad interests. CatExpress is flexible enough to serve both ends of this spectrum, and all points in between.

The **Outagamie Waupaca Library System's** shared automation network (OWLSnet) includes 52 libraries in 10 Wisconsin counties. Seven of them share the copy-cataloging load using CatExpress. "CatExpress allows our libraries to expedite cataloging of their own materials," says Catalog Librarian

Holly Ledvina. "This allows central cataloging to focus on original input."

Specialized libraries have also discovered how CatExpress adds efficiency and saves them money. "CatExpress is, dollar for dollar, one of the most valuable services we have in the library," says David Sweet, director of the **American Health Information Management Association's FORE Library** in Chicago, Ill. "It's one of those rare library tools that combines extraordinary ease of use with quick turnaround time, so our materials get on the shelf and into users' hands at minimal cost."

That experience is echoed by Richard Knutson, acting head of technical services at the **Perrot Memorial Library** in Old Greenwich, Conn. "It is not an exaggeration to say that CatExpress has revolutionized our department," he says. "Our turnaround time for most books has been cut to four days or less, from entry to shelf. Our patrons are pleased, and we now have time to keep up with other technical services." Another benefit he notes: With so many video and music CD records available in WorldCat, "CatExpress has cut down the turnaround time for these media by more than half."

Benefits

Speed up copy cataloging with high hit rates from WorldCat—connect to more than 95 million records that represent all material formats in over 450 languages

Enable more staff to perform copy cataloging using an intuitive, Web-based interface

Easier copy cataloging for popular and hard-to-find items

Save staff time by receiving records automatically for materials you order through your materials vendors through WorldCat Cataloging Partners

Features

Search and retrieve MARC records from the world's largest bibliographic database

Basic editing of bibliographic records

Print spine and pocket labels for items in your collection

Download OCLC-MARC records

Find quick and easy online documentation and context-sensitive help

Requirements

Current generation Web browser

MARC-based library automation system (CatExpress libraries use a variety of local systems, including Winnebago, SirsiDynix, Follett and TLC; other systems may work with CatExpress as well)

OCLC Cataloging Label Program to print labels (available at no charge from the OCLC Web site at www.oclc.org/label/)

Web Resources

www.oclc.org/catalogingpartners/
Details about OCLC's WorldCat Cataloging Partners program

www.oclc.org/bibnote/
Details about OCLC's Bibliographic Record Notification service

www.oclc.org/catexpress/about/success/
Success stories from CatExpress libraries

www.oclc.org/services/cataloging/
Additional OCLC cataloging services that enhance library productivity

Related Services

Create, send, manage and track ILL requests and document orders more quickly with **WorldCat Resource Sharing™**

Optional **WebDewey** and **Abridged WebDewey** services, available by subscription, bring classification reference to your fingertips

For detailed information on CatExpress, complete with answers to frequently asked questions and a Web tutorial, visit the OCLC Web site at www.oclc.org/catexpress/

For pricing information and to order CatExpress, call OCLC at 1-800-848-5878 or contact your OCLC regional service provider directly.
www.oclc.org/contacts/regional/

The world's best cataloging resource

With more than 95 million records, WorldCat is the world's most comprehensive bibliographic database. Updated at a rate of nearly one new record every 10 seconds, WorldCat contains bibliographic records and holdings information contributed by more than 9,000 libraries around the world. And now WorldCat.org makes the items in library collections—physical and digital, popular or special—discoverable by people searching the Web. Learn more at www.oclc.org/worldcat/.



OCLC helps libraries in more than 100 countries provide users with bibliographic, abstract and full-text information when and where they need it. OCLC and its member libraries cooperatively produce and maintain WorldCat, the world's most comprehensive bibliographic database. Please contact us to learn more about OCLC in your part of the world.

Australia

Suite 5, 131 Paisley Street
Footscray, Victoria 3011
Australia
T +61-3-9362 8500
F +61-3-9362 8501
E australia@oclc.org

Canada

701 rue Salaberry, bureau 200
Chambly, QC J3L 1R2 Canada
T +1-450-658-6583
888-658-6583
F +1-450-658-6231
E canada@oclc.org

China

Room 1207, 12th Floor
China Electronics Plaza,
Building B
No. 3, Dan Ling Road
Hai Dian District, Beijing 100080
China
T +86-10-8260-7931
F +86-10-8260-7539
E china@oclc.org

France

14, Place des Victoires
92600 Asnières sur Seine, France
T +33-(0)1-55 02 14 80
F +33-(0)1-47 93 50 13
E france@oclc.org

Germany

Grünwalder Weg 28g
82041 Oberhaching,
Deutschland
T +49-(0)89-613 08 300
F +49-(0)89-613 08 399
E deutschland@oclc.org

Mexico

Av. Amores 707 Desp. 401
Col. Del Valle
México 03100, D.F.
T +52-55-5687-3307
F +52-55-5523-9212
E mexico@oclc.org

Netherlands

Schipholweg 99, 2316 XA
P.O. Box 876, 2300 AW
Leiden, Nederland
T +31-(0)71-524 65 00
F +31-(0)71-522 31 19
E nederland@oclc.org

Switzerland

St. Jakobs-Strasse 96
4052 Basel, Schweiz
T +41-(0)61-378 80 70
F +41-(0)61-378 80 79
E schweiz@oclc.org

United Kingdom & Ireland

7th Floor, Tricorn House
51-53 Hagley Road, Edgbaston
Birmingham B16 8TP, UK
T +44-(0)121-456 46 56
F +44-(0)121-456 46 80
E uk@oclc.org

United States

6565 Kilgour Place
Dublin, OH 43017-3395 USA
T +1-614-764-6000
800-848-5878
(US + Canada only)
F +1-614-764-6096
E usa@oclc.org